

Threats, challenges and opportunities for managing Oregon's sagebrush habitats

Chad S. Boyd



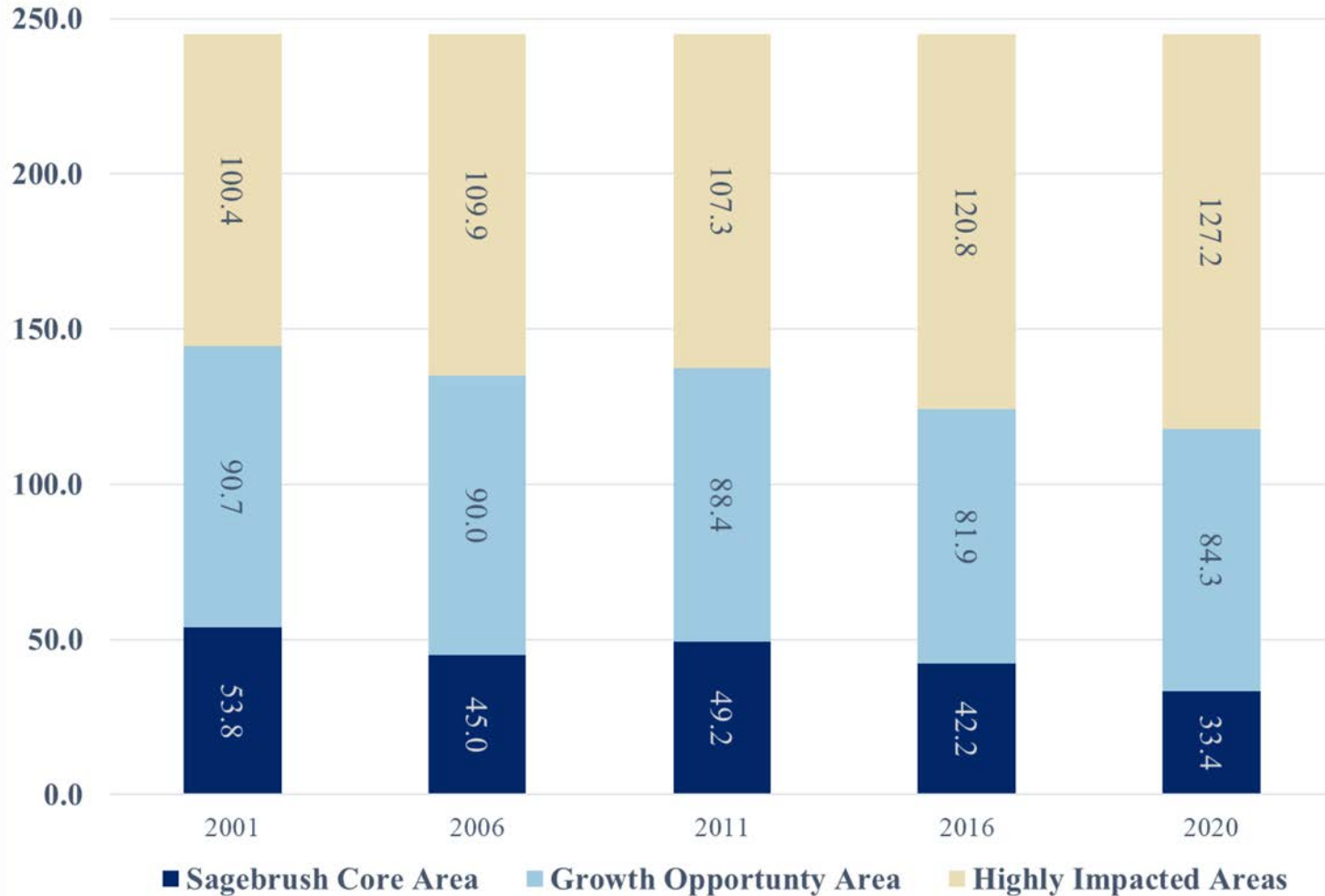
A wide-angle photograph of a desolate, flat landscape. The foreground is a vast, brown, textured plain, possibly a salt flat or a dry lake bed, with some darker, more textured areas. In the distance, there are low, rolling hills and mountains under a sky filled with soft, white and grey clouds. The lighting suggests a late afternoon or early morning setting.

***“God-forsaken country that never was
designed to be the habitation of a
Christian or civilized man”***

Hines 1851



Change in Core Sagebrush Areas 1998 - 2020



26.8
Million acre
increase in
**Other
Rangeland
Areas**

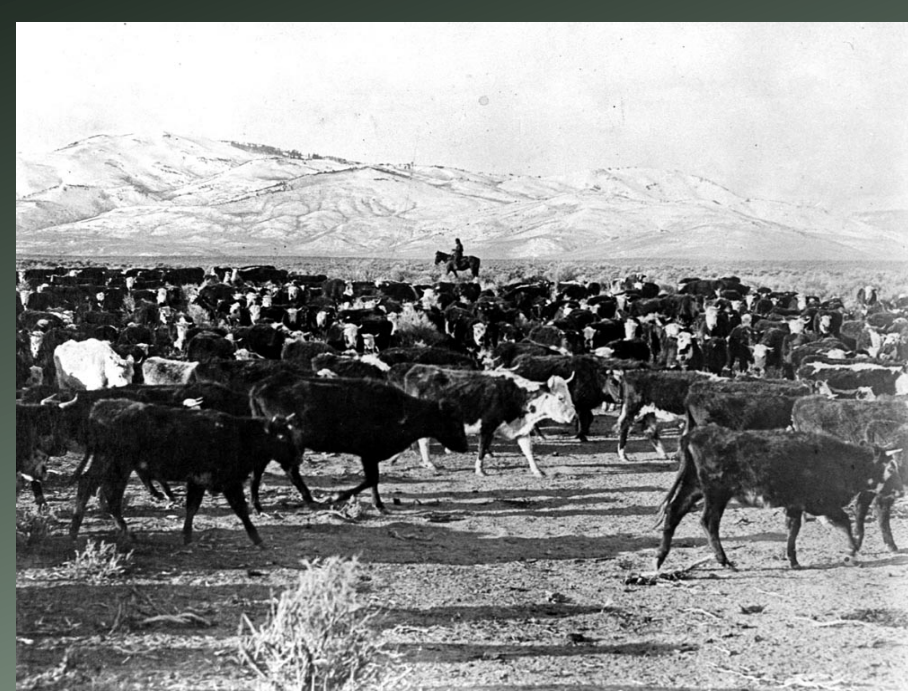
6.4
Million acre
loss of
**Growth
Opportunity
Areas**

20.4
Million acre
loss of
**Core
Sagebrush
Areas**

1.3 Million acres of *new, effective* conservation & restoration per year just to offset losses

How did we get here?

- 1850 - 1900
 - Homestead act of 1862
 - Human population increase...mining
 - Agriculture



How did we get here?

- 1850 - 1900
 - Completion of Transcontinental Railroad in 1869.



How did we get here?

- 1850 - 1900
 - Cheatgrass first reported in US (Colorado) in late 1800's.
 - First reported in PNW, 1889 near Spence's Bridge, B.C.
 - In US PNW near Ritzville, WA in 1893.
 - Spatially limited



How did we get here?

- 1850 - 1900

Attitude = utilitarian delusion:

Settlers in Columbia Basin assured that:

“...another class of vegetation, no less nutritious has succeeded it”

Anderson 1882



How did we get here?

- 1900 - 1950
 - Exponential expansion
 - Near present-day distribution by 1950
 - Attitude = alarmed:

“...thousands of acres are being taken by this ‘cheat.’ Everyone is alive to the seriousness of the problem”

Wash. State Univ. 1914

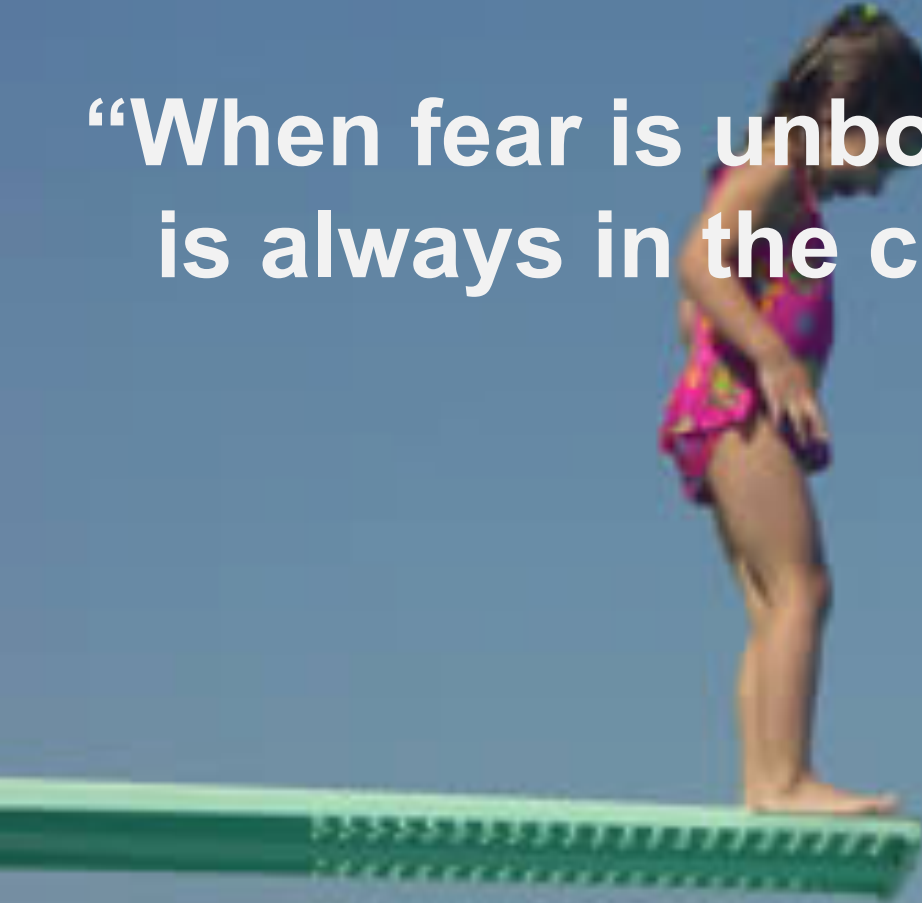
“...one simply woke up on fine spring to find the range dominated by a new weed.”

Leopold 1941

What can we do?

“When fear is unbounded, catastrophe is always in the confidence interval.”

Kevin Doherty



Money and effort alone won't fix
the problem



Scale is a BIG DEAL

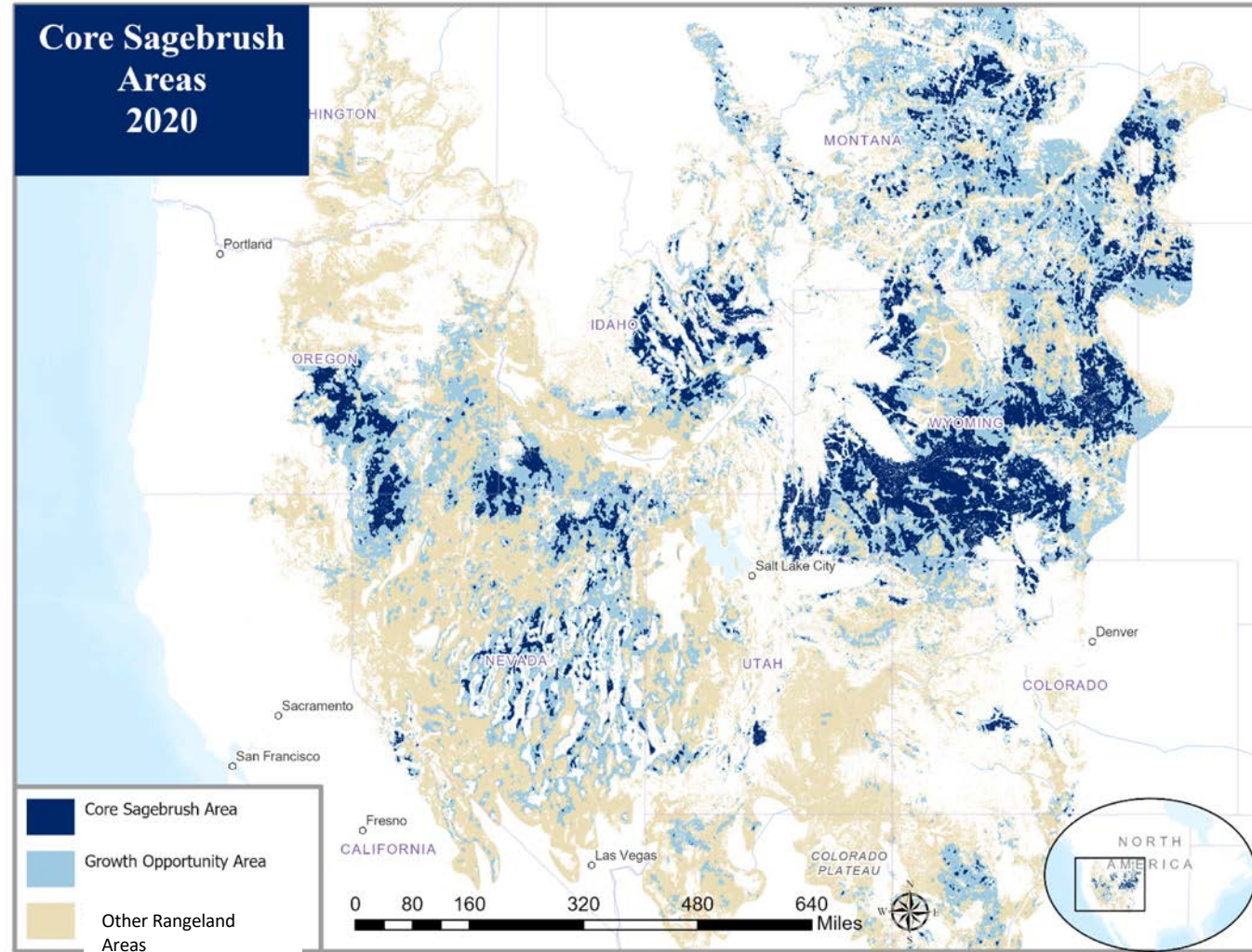


Focus on the 80%

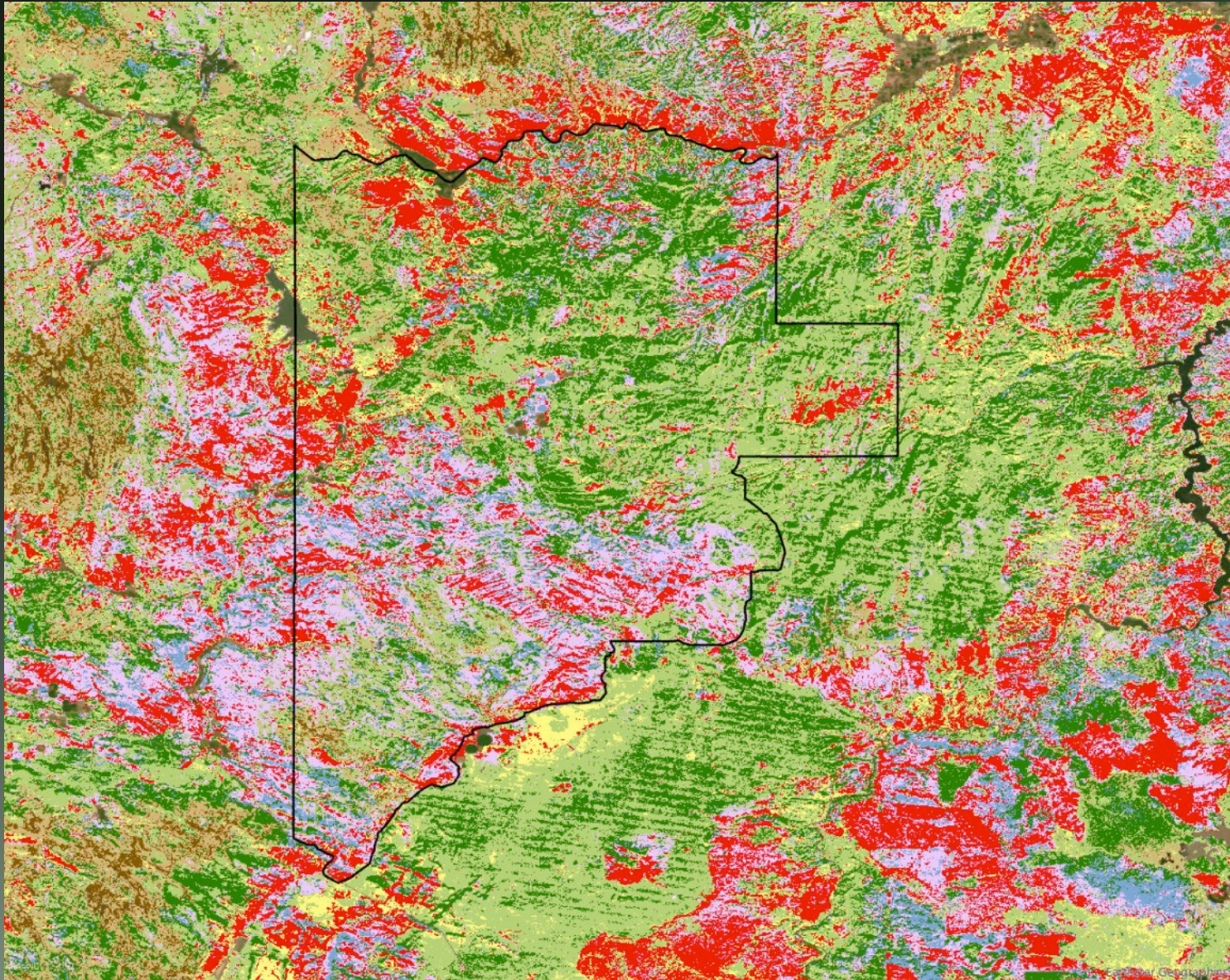


Strategic Conservation

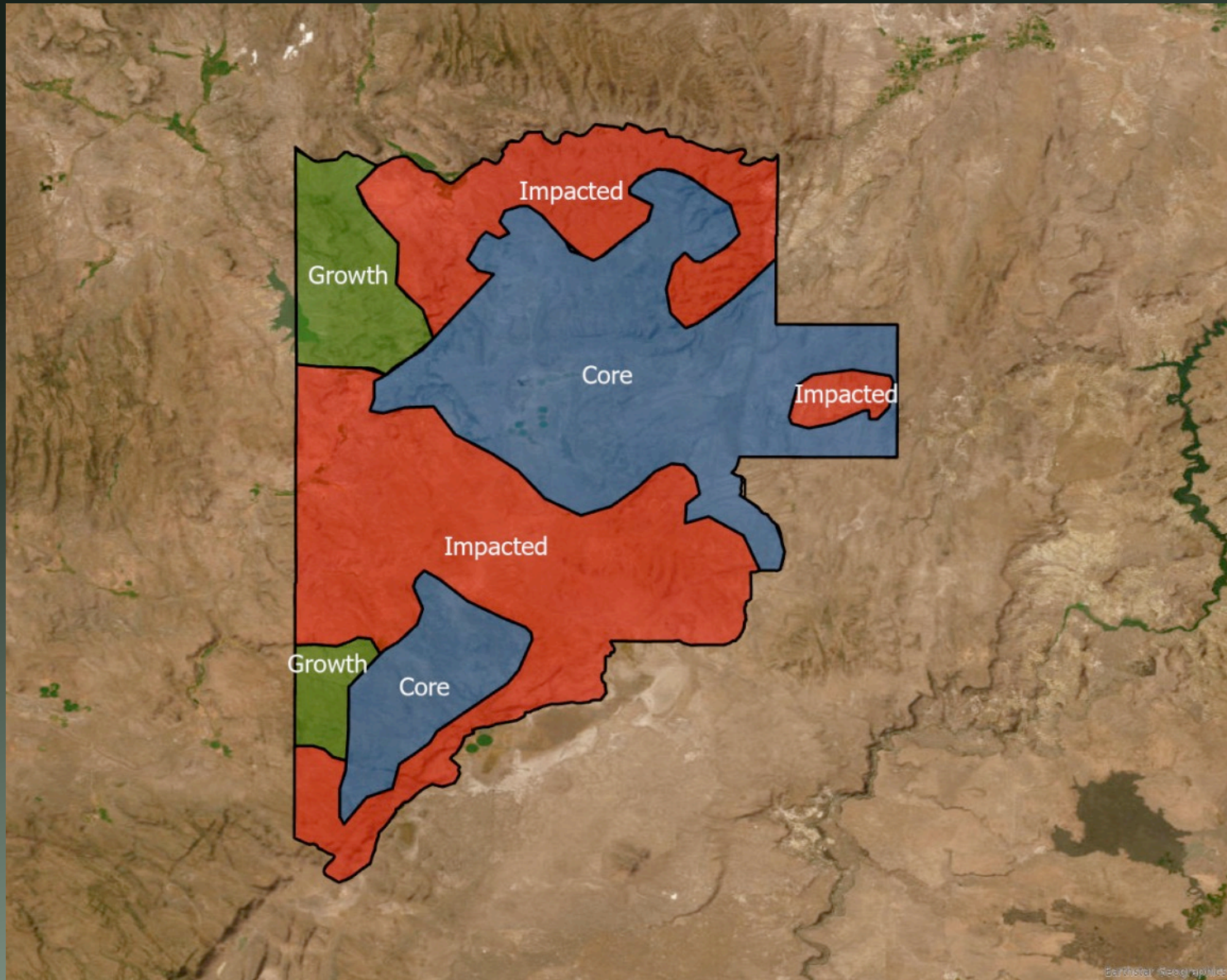
- Losing 1.3 mil acres/year
- Our efforts have been significant, but...
- Something needs to change
- Strategic conservation has to be a part of that change



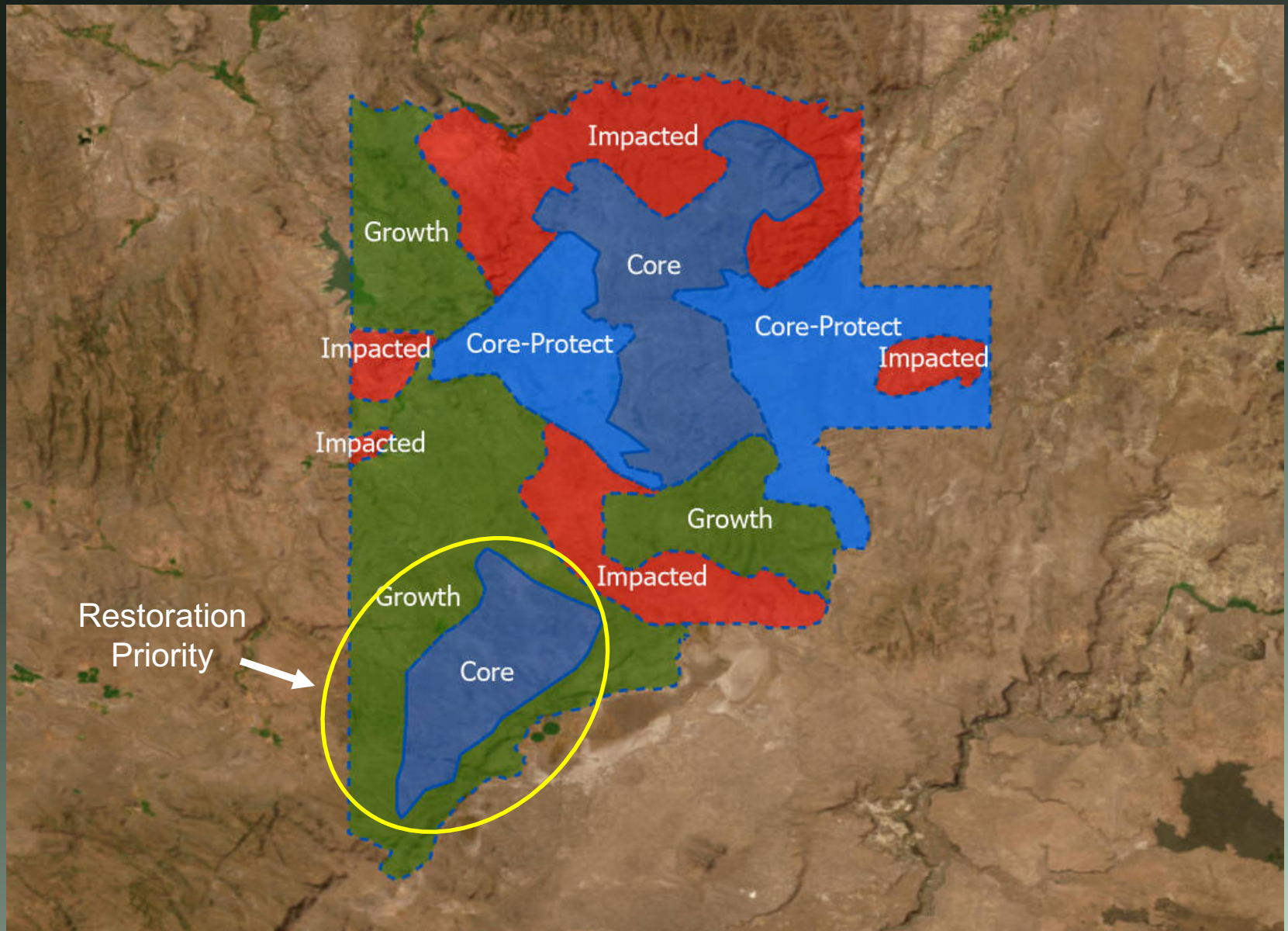
Operationalizing Strategic Conservation



Operationalizing Strategic Conservation



Operationalizing Strategic Conservation



Toward a new management paradigm

- Management targets *are not* driven by opportunity...they **are** driven by a strategic framework for increasing Core habitat acres
- Manager success *is not* measured at the project scale, *it is* the change in core acres over the maximum extent of management influence and across a management lifetime.

Take Home's

- Challenges facing sagebrush ecosystem are intimidating but not insurmountable
- Meeting those challenges will require changes that increase our management effectiveness
- Strategic Conservation will be a key part of that change