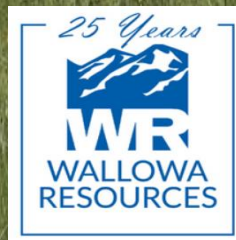


Defend and Grow the Core, the Wallowa County Way



Mark Porter, Joe Kline, Marci Schreder

Wallowa County





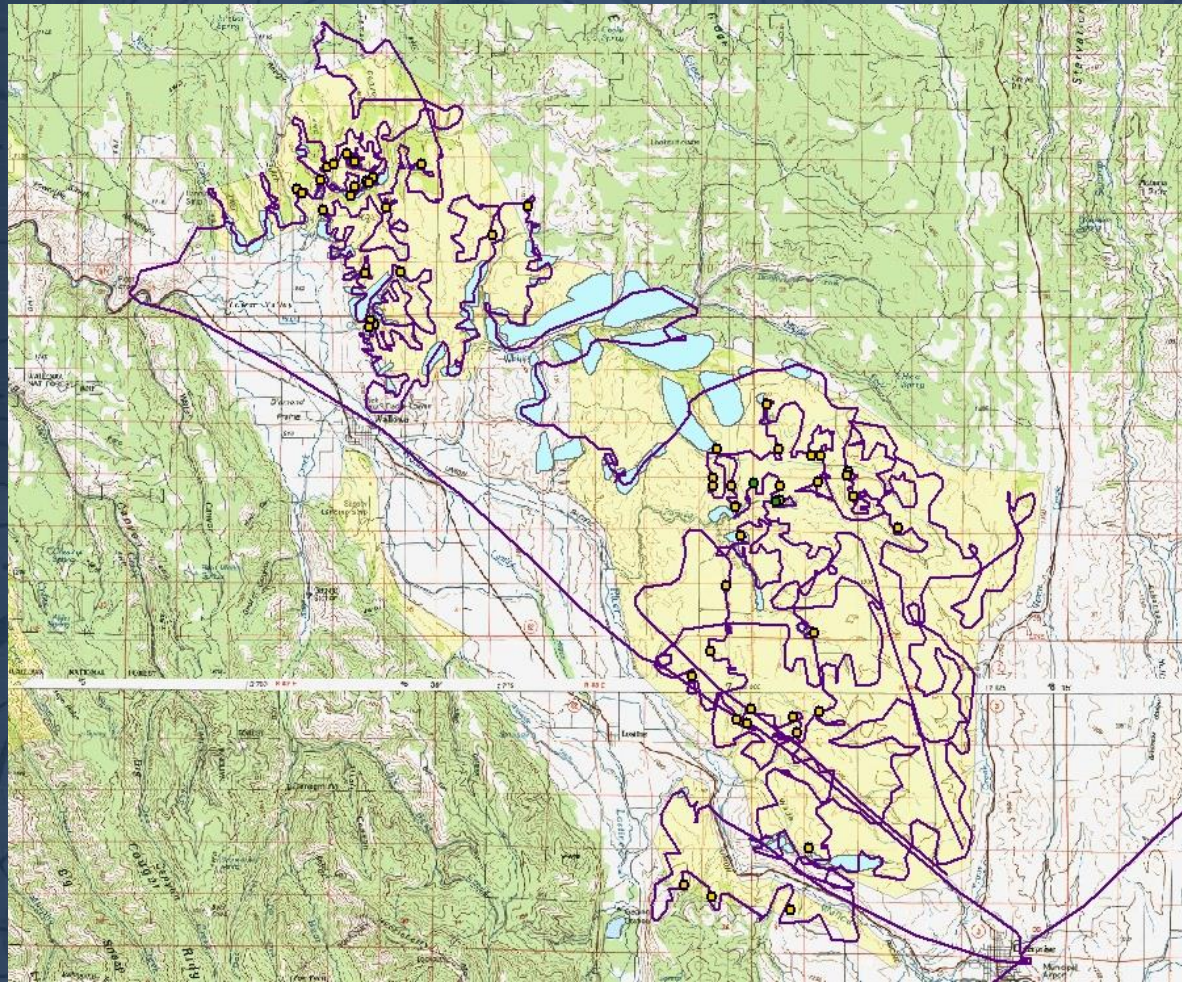






Project Goals

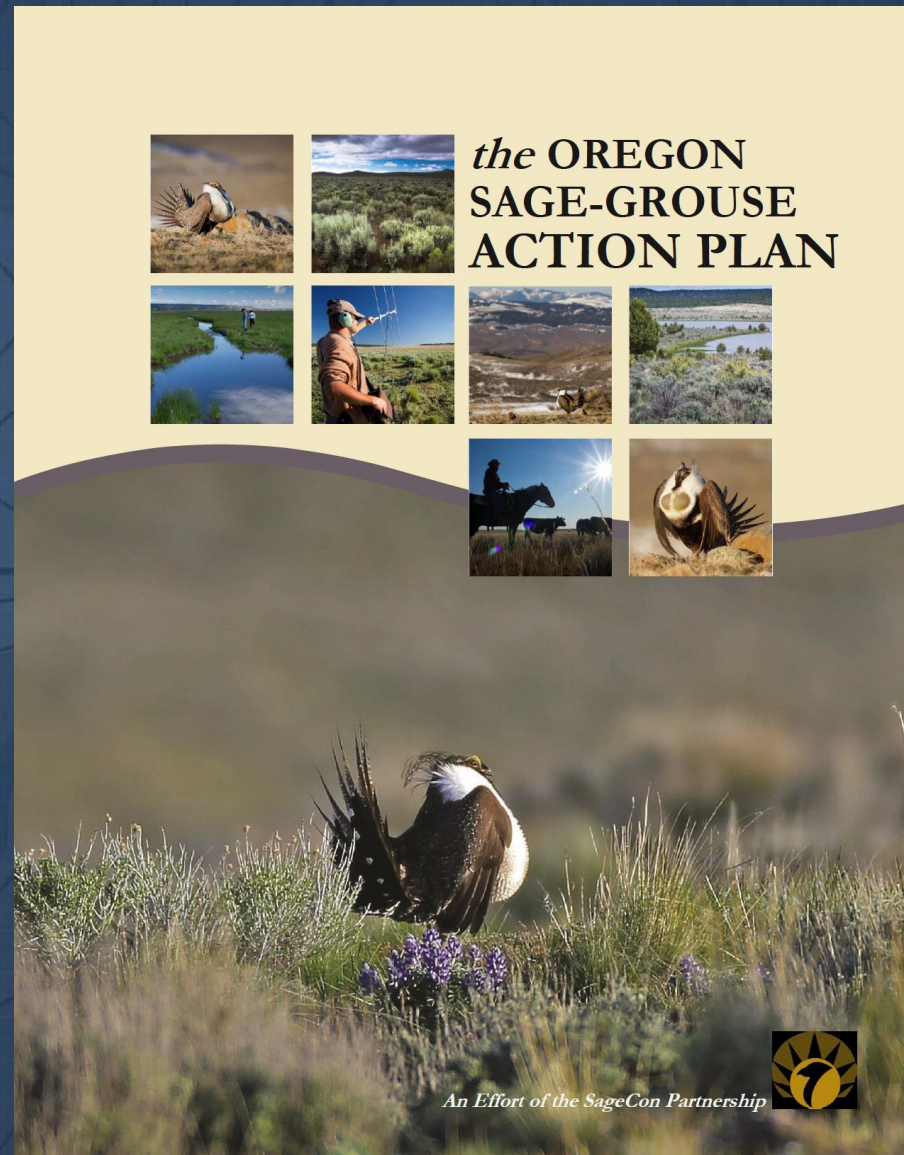
- Inventory 60,000 ac of Zumwalt and Imnaha
- Chemically treat ~ 600 acres of Medusahead
- Reseed 100 acres of private lands





Outside of Statewide Focal Areas

- Located outside of sage-grouse & sage-steppe priority areas
- Without statewide emphasis we had to determine our own priority areas (core, transition)
- Must be creative in applying funding resources to rangeland issues (IAGs and other rangeland stressors)



Changing the Management Paradigm What We're Doing In Wallowa County

- 1) **Shift Management Focus:** Undesirable vegetation vs. desirable vegetation Enhance grassland conditions, specifically “grazing lands”
- 2) **Collaboration:** Having the right people at the table – Private & Public
- 3) **Landscape Scale:** small enough to manage, but large enough to matter
- 4) **Research, Local Knowledge, Data Gaps:** lessons learned from over 35 people
- 5) **Whole Ranch Planning:** Addressing multiple rangeland stressors
- 6) **Established “Defend & Grow Priority Areas:** RAP, Landtrender, local knowledge tools to identify core regions
- 7) **Developed IAG SAP:** All county strategy plan
- 8) **Basic Range Management Plan:** inventory & assessment of multiple rangeland stressors.



Collaboration – Evaluate Rangeland Stressors

- **All Lands – Private & Public**
- **Local Knowledge**
- **Evaluation of Past Failures/Successes**
- **Identified our Limitations (workforce, available tools, funding)**



A Roadmap: New Strategy Planning

**WALLOWA COUNTY INVASIVE
ANNUAL GRASS PARTNERSHIP
STRATEGIC ACTION PLAN**



1

**Embrace Regional
Strategy – Defend &
Grow the Core**

**Perennial Grassland
Communities are
Stable, Resilient, and
Resistant to IAG
Invasions & other
Rangeland Stressors**

Shifting our Management Focus

“Changing the management paradigm by taking a bigger look at our rangeland conditions – a comprehensive approach”

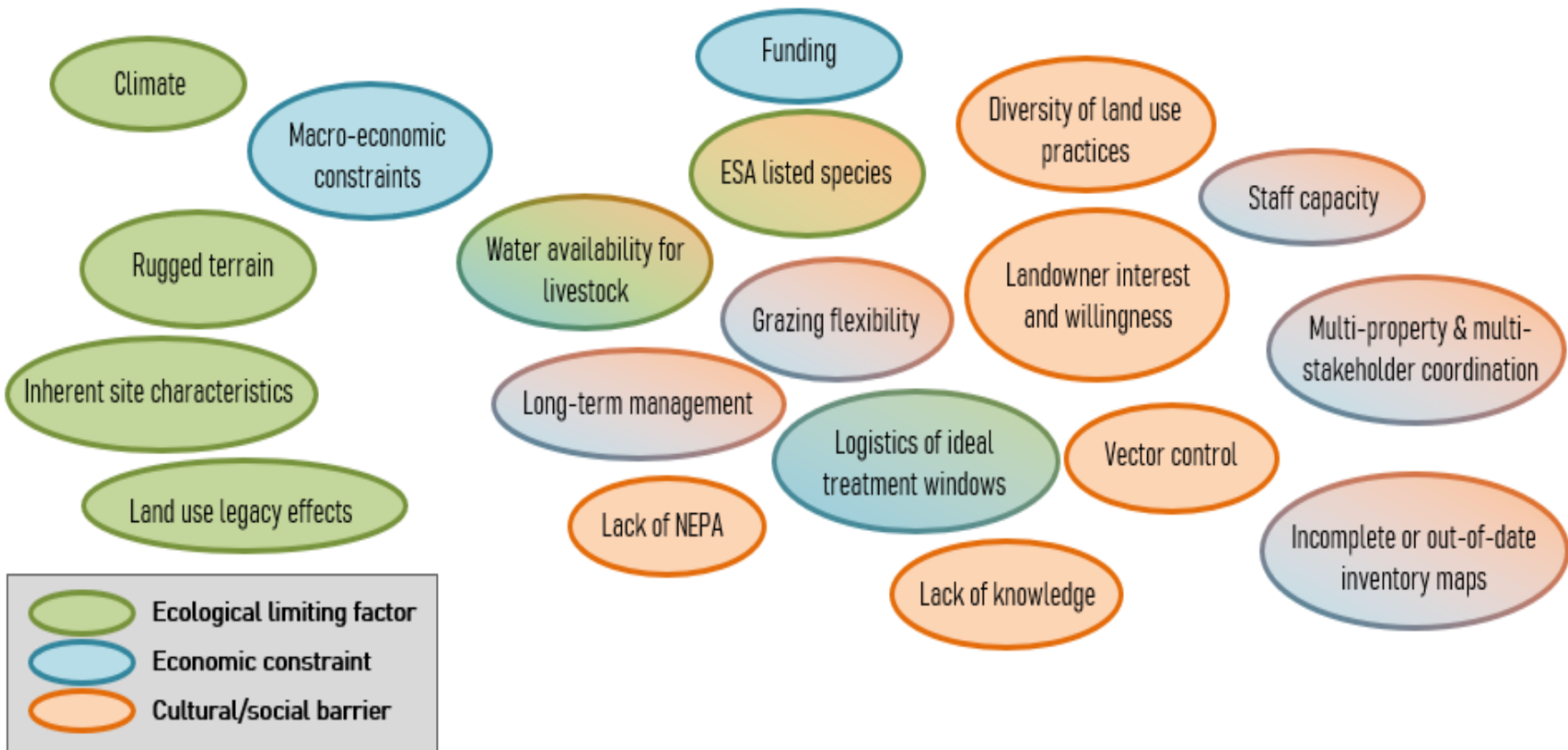
- 
- **Enhance Grassland Conditions
“Grazing Lands”**
 - **Whole Ranch Planning**
 - **Assess Multiple Rangeland Stressors**
 - **Use Multiple Tools**
 - **Embrace a New Strategy**

Assessed Rangeland Stressors

Less surmountable

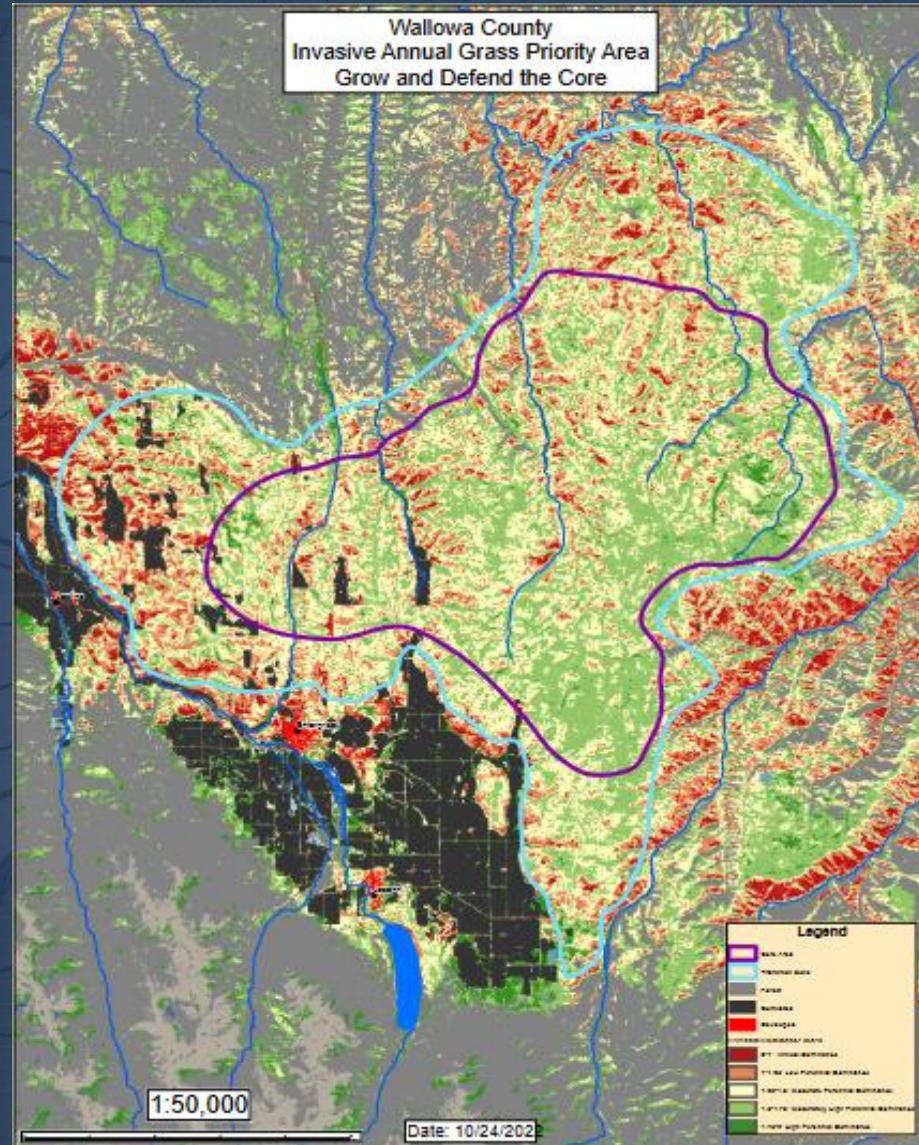


More surmountable



Defend & Grow the Core Priority Area

- **Determined Core Intact Grassland Priority Area**
- **Defined by Core & Transition Area**
- **Perennial Biomass vs. Annual Biomass**



Work at a Landscape Scale:



Prairie



Canyonlands



Wallowa Valley



Forests



Identified Habitat Priority Areas \longrightarrow Large Enough to Matter, Small Enough to Work In

A Diverse & Rugged Landscape Requires Multiple Tools

Whole Ranch Management Planning

1. Individual Plans - “Living Document “
2. Establish Goals & Objectives
3. Whole Ranch Inventory/Assessment
4. IAGs & other Rangeland Stressors
5. Identify Areas of Concern:
(IAGs, broadleaf, vectors, grazing, stock water, fencing, riparian area management)
6. Determine Solutions for Whole Property
7. Implement Conservation Actions

BASIC RANGELAND MANAGEMENT PLAN



Rail Canyon Ranch

Secure Funding Resources- Collaboratively

- **Whole Ranch Planning – Ensuring that plans & products are compatible with existing program requirements with NRCS, OWEB, USFWS, Others**
- **Stakeholder Engagement Landscape Level Pilot Project**
- **Outreach - Workshops**
- **Independent Plans that Connect People Across the Landscape**
- **Addressing Multiple Conservations Leads to More Sustainable Grassland Improvements**
- **Address Complex Problems with Solutions that are Longer Lasting and Flexible**



Countywide Scale Up



Building
Resistance &
Resilience
Across the
Landscape,
Case by Case

Take Home Messages

- Invasive annual grasses demand our attention outside of Sage Grouse country.



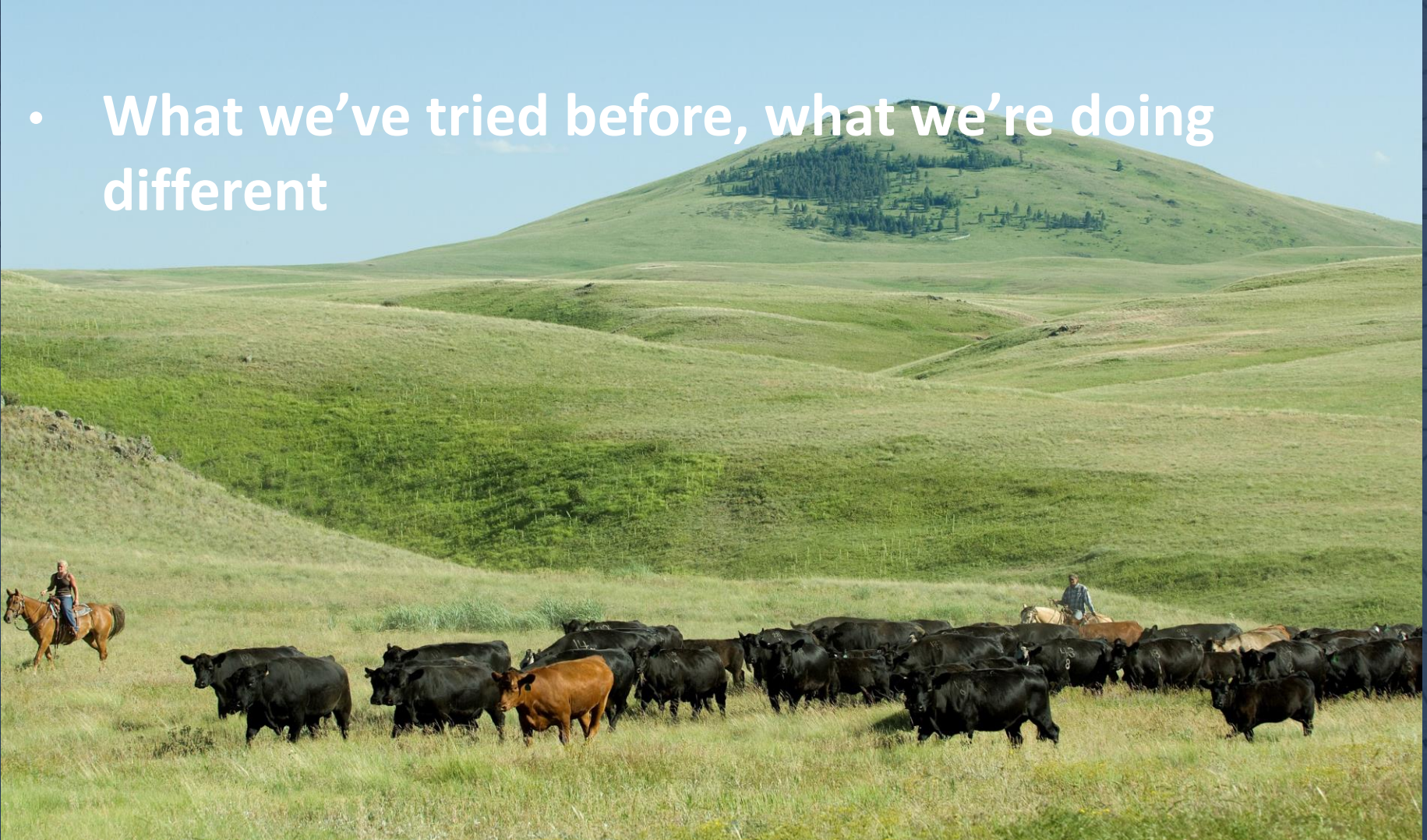
Take Home Messages

- Staggering scale, determined response



Take Home Messages

- What we've tried before, what we're doing different



Take Home Messages

- **Stepping forward with an eye on expansion**

