

Reducing Rangeland Wildfire Risk *The Southeast Oregon Wildfire Resiliency Project*



HARNEY COUNTY
Wildfire
COLLABORATIVE





HARNEY COUNTY FOREST
Restoration
COLLABORATIVE



MALHEUR NWR COMPREHENSIVE
Conservation
PLAN COLLABORATIVE



HARNEY COUNTY
Wildfire
COLLABORATIVE



HARNEY BASIN
Wetlands
COLLABORATIVE



BIZ HARNEY
Opportunity
COLLABORATIVE



YOUTH CHANGING
the Community
COLLABORATIVE





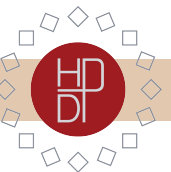
*Addressing
complex
challenges
and
opportunities
that impact
all*





Collaboration means everyone is welcome at the table

Bringing people together to listen and share their perspectives fosters greater understanding, relationships, and trust.





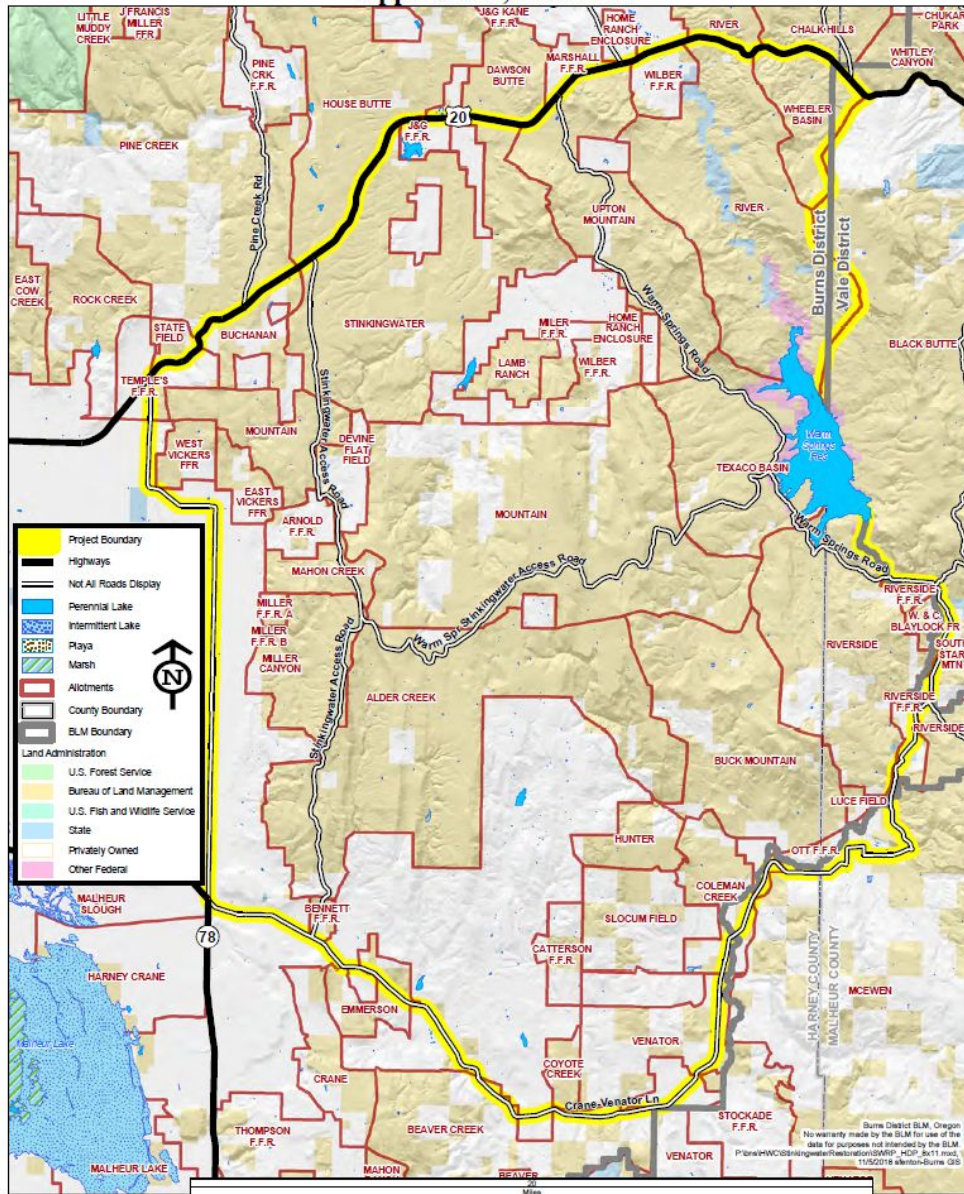
HARNEY COUNTY
Wildfire
COLLABORATIVE

Focus on three
phases of wildfire
management:

- *Prevention*
- *Suppression*
- *Restoration*



Stinkingwaters Restoration Project
Approx 320,000 Acres



Stinkingwater Mountains Restoration & Fire Resilience Project

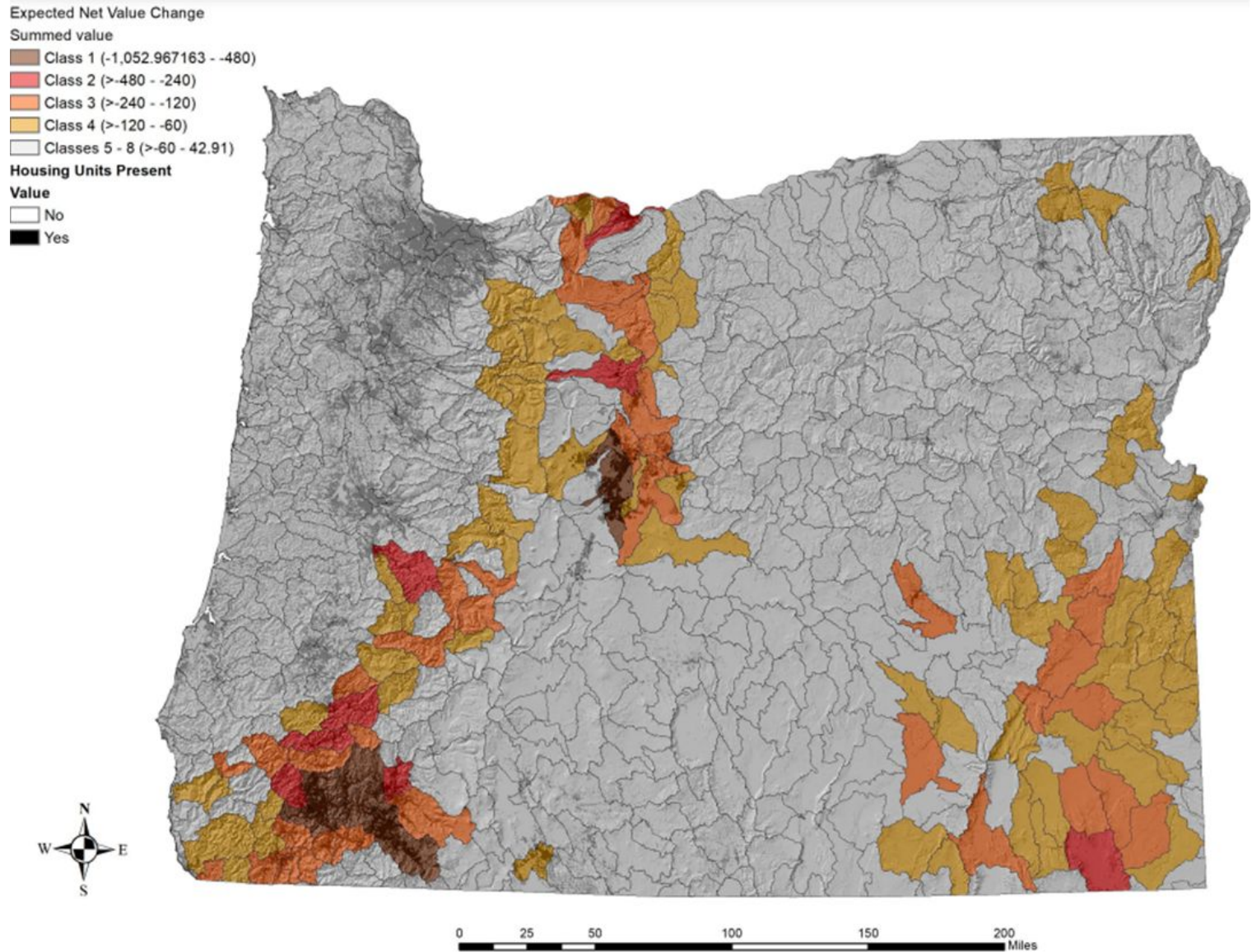
Project began in 2018

Multiple partners working to improve ecosystem function degraded from annual grasses, juniper, and fire history

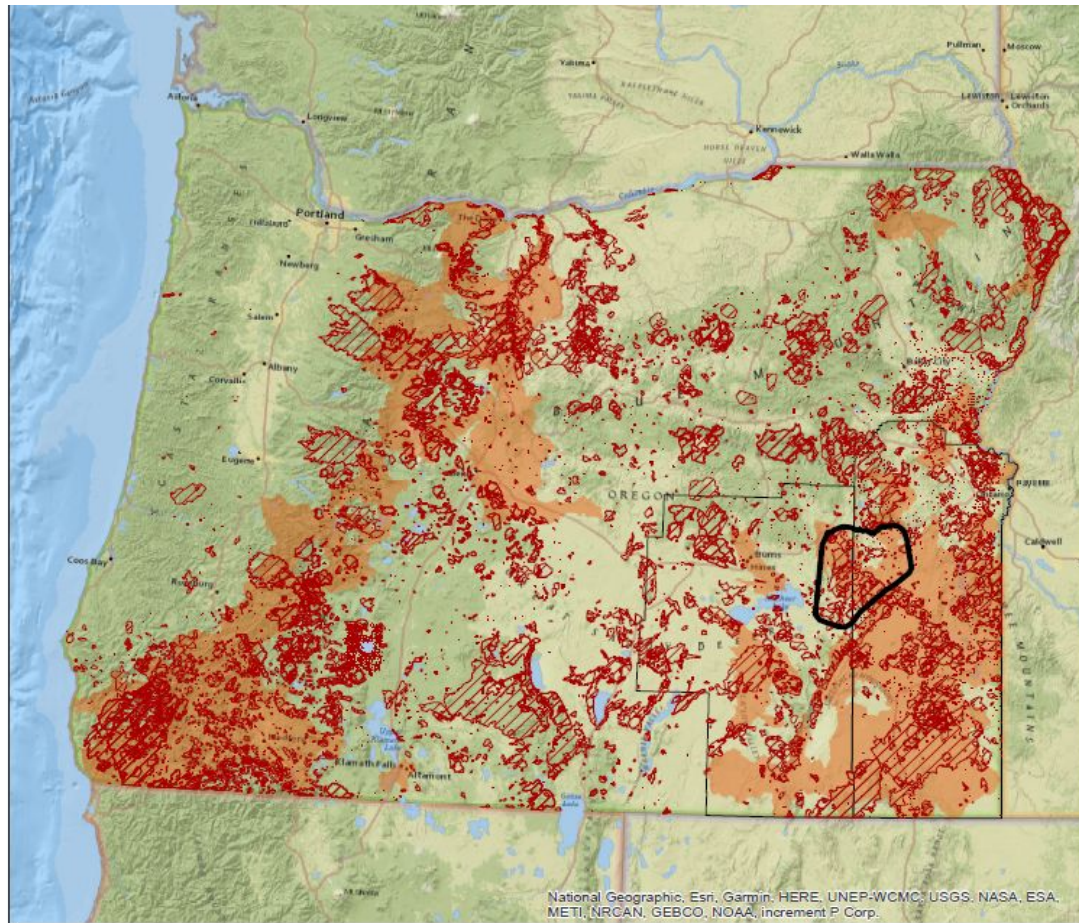


Senate Bill 762

- Signed in July 2021 to improve Oregon's wildfire preparedness levels
- Section 18-20 allocated funds for landscape resiliency projects
- Areas identified for priority throughout Oregon



Southeast Oregon Wildfire Resilience (SOWR) Project



- Proposed Project Area
- Fire Perimeters
- Highest Wildfire Risk Classes
- Harney and Malheur Counties

0 50 100 200 Miles



Federal, tribal, state, county, and NGO's submitted projects

Harney County Wildfire Collaborative and partners in Malheur County combined to create landscape scale management that makes sense.



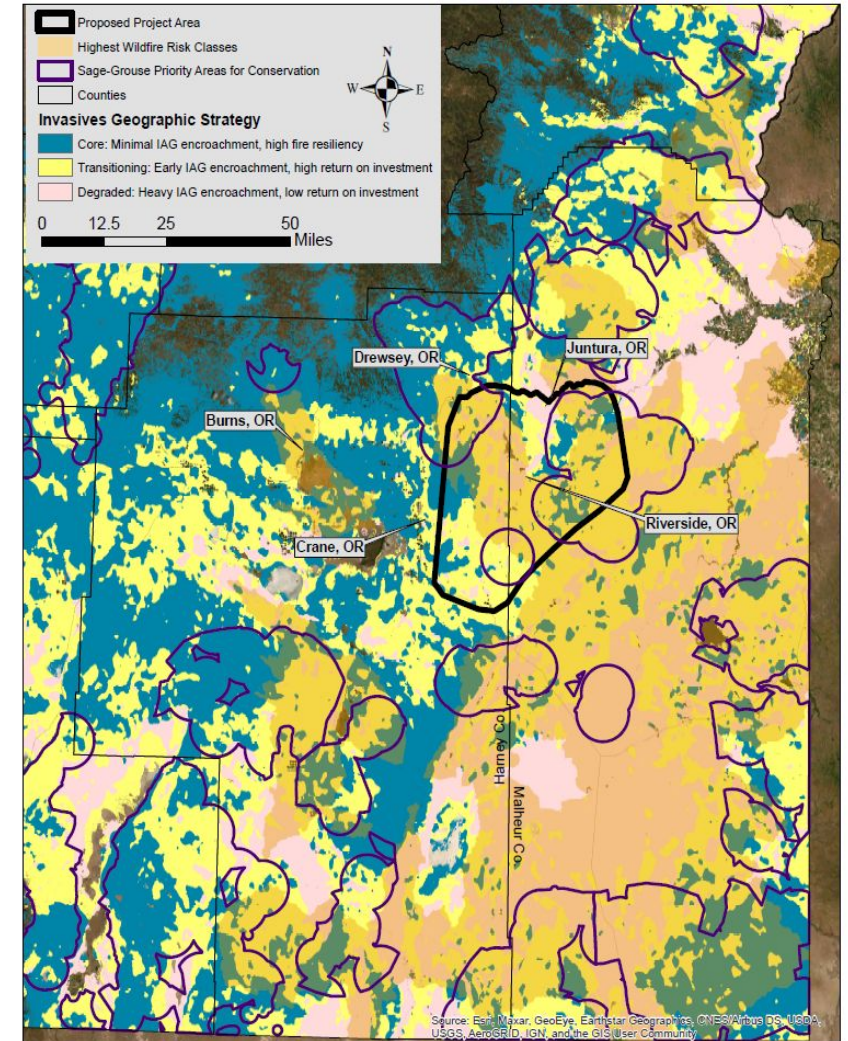
Southeast Oregon Wildfire Resiliency Project

Resilience Project

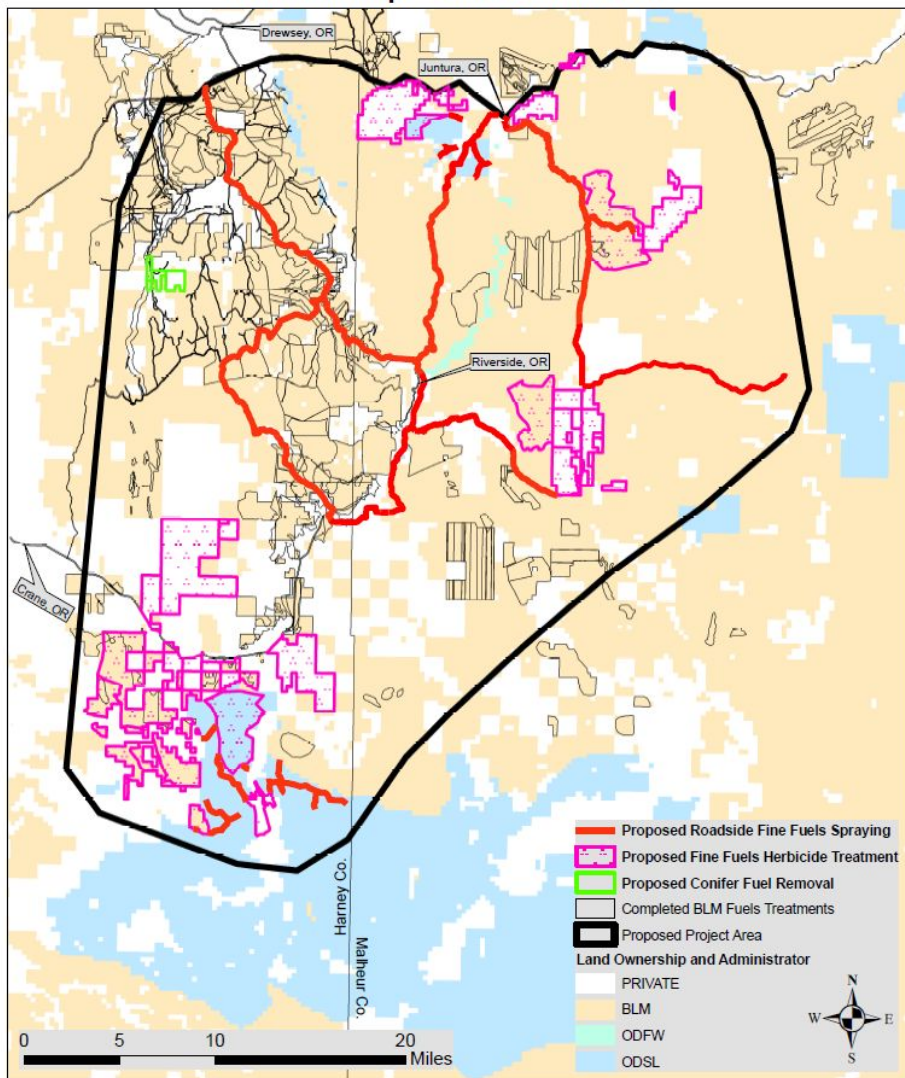
- Project area chose through the Invasive Geographic Strategy - Defend the Core, Grow the Core.
- Areas of high potential success for spray applications were chosen.
- To be finished by June 2023.



Map 2: Southeast Oregon Wildfire Resiliency Project Landscape Scale Strategy for Addressing Invasive Fuels



Map 3: Southeast Oregon Wildfire Resiliency Project
Completed and Proposed Fuels Treatments
Across Multiple Land Jurisdictions



Goals for Southeast Oregon Wildfire Resilience Project

- 70,000 acres of treatment
- 65,000 acres of annual grass herbicide treatment
- 120.5 miles of roadside herbicide treatment
- 1,000 acres of early phase juniper encroachment treatment
- 2000 acres of grass re-seeding

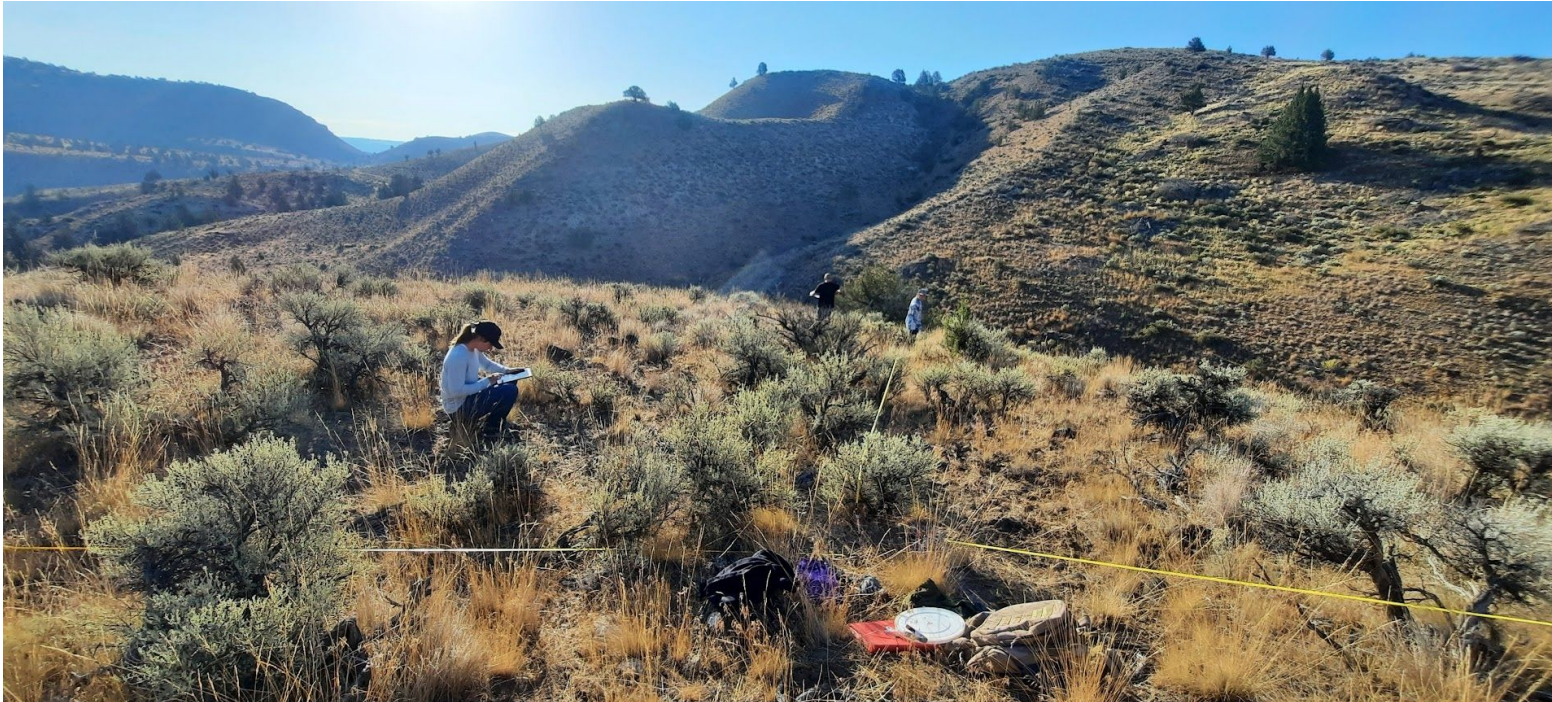


High Desert Partnership Ecological Monitoring Program

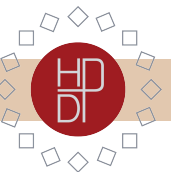
Third party neutral monitoring allows for unbiased information to be collected while allowing for local youth and new professionals to gain experience.



Harney County Wildfire Collaborative Informing Partners



Collecting information, public outreach and communication is key to informing collaborative partners and the public to increase well informed decisions to be made.



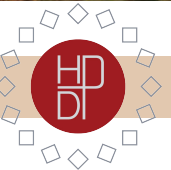
What we've seen

History and trust from partners was crucial

This is not a one and done project

Monitoring for effectiveness of projects.

Strategic landscape planning increases ability to act quickly on funds





The invasive weeds and other ecological issues that face Southeast Oregon are not going to solve themselves... With strategic and collaborative efforts, we hope to make this landscape more resilient and resistant to megafires.

-Autumn Muir (Stinkingwater Subcommittee Facilitator)

highdesertpartnership.org