

Finding the “Right” Scale for Community-Based Conservation

Katie Wollstein, Ph.D.
Rangeland Fire Specialist
Oregon State University Extension



Oregon State University
Eastern Oregon Agricultural
Research Center- Burns

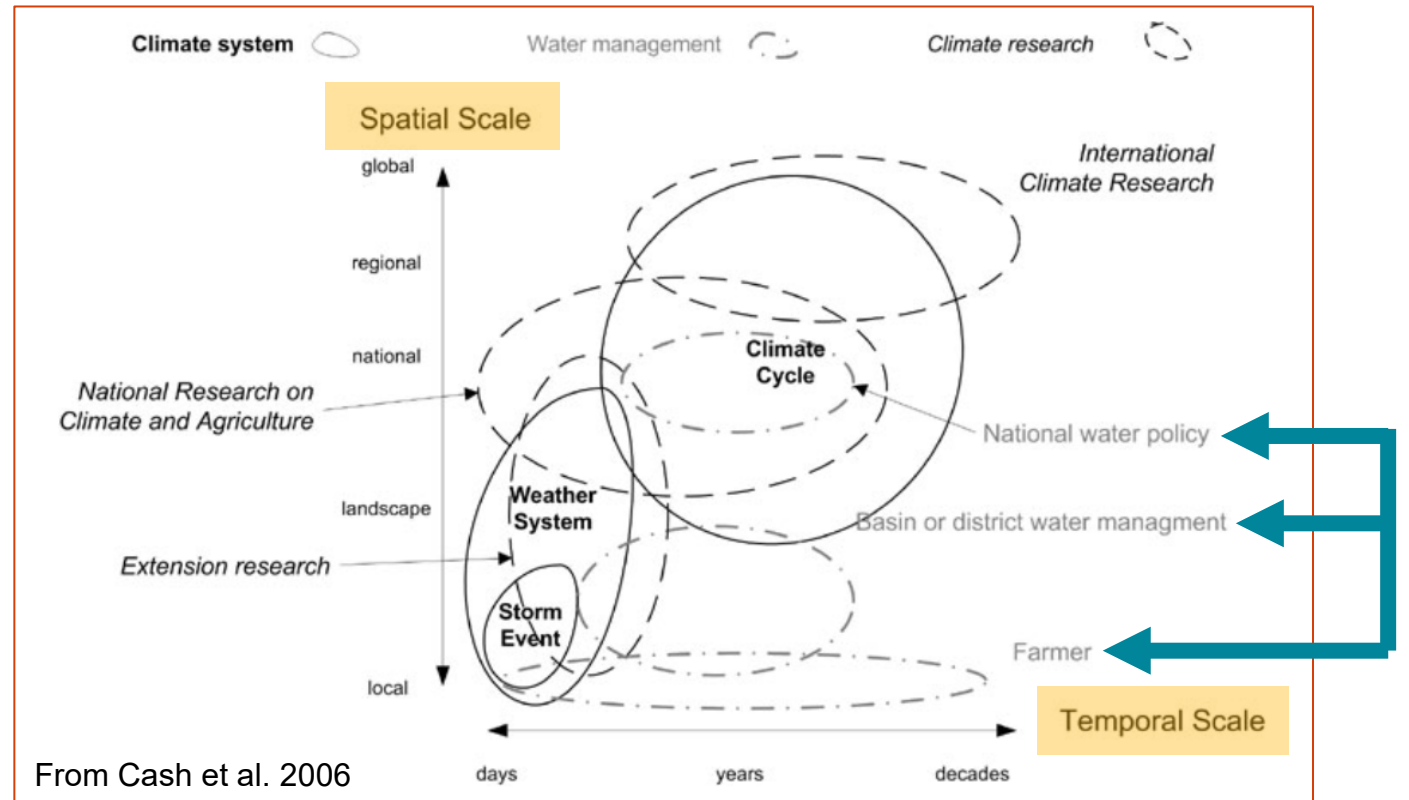
Why do we need to work at “right” scales?

- Our challenges on sagebrush rangelands are complicated!
 - Social-ecological interdependencies require collective action
- Our work requires different types of action, at different scales



What is scale?

- Analytical dimension used to characterize a phenomenon (spatial, temporal, jurisdictional...)
- Scales are nested
 - Activities at “smaller” scales can influence outcomes at “larger” ones
 - Scale mismatches can occur



The “right” scale

Co-defined by social + ecological conditions

- Supports collective functioning to address an issue
- Scale selection should be guided by:
 - Local biophysical context (issue/threat)
 - Place-based experiences, local knowledge
 - Historical relationships, existing networks, assets

Ecological
conditions

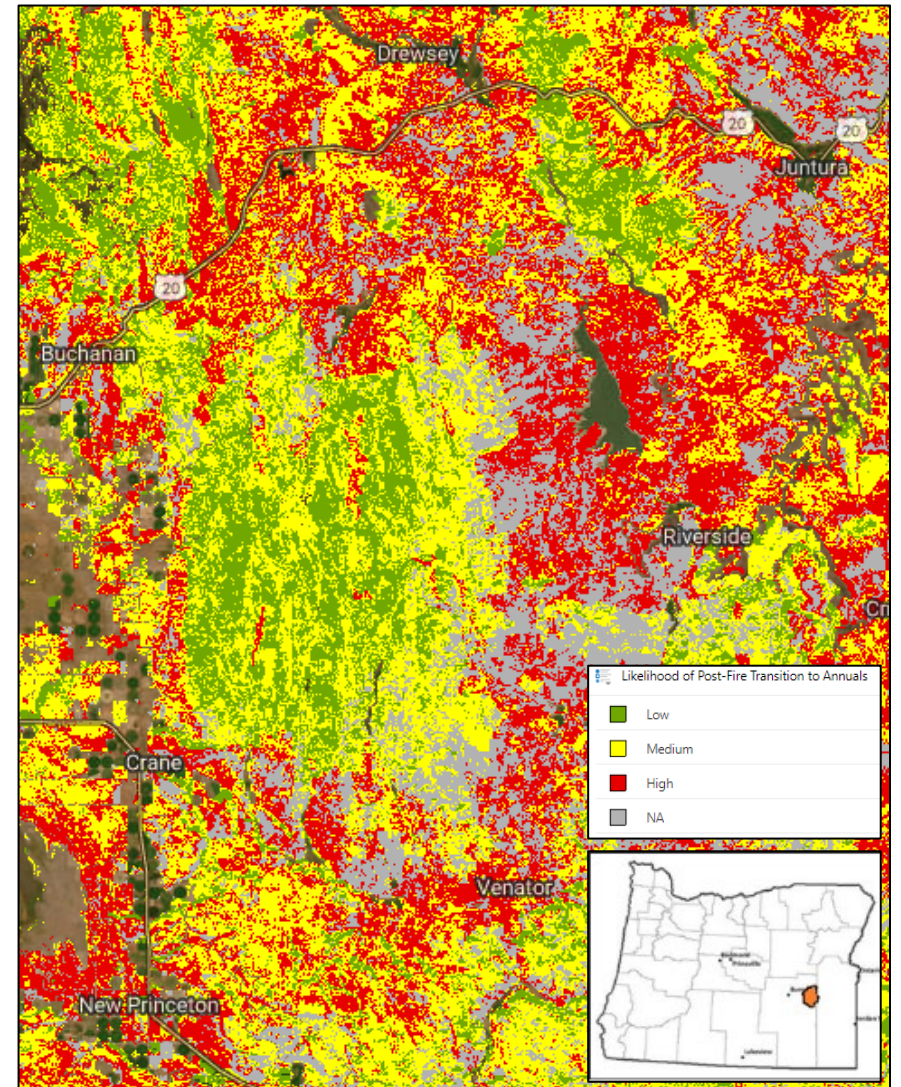
Social
conditions



Photos: Katie Wollstein (OSU), Stephanie Falck (ARS), Casey O'Connor (NPS)

Defining a scale: Ecological considerations

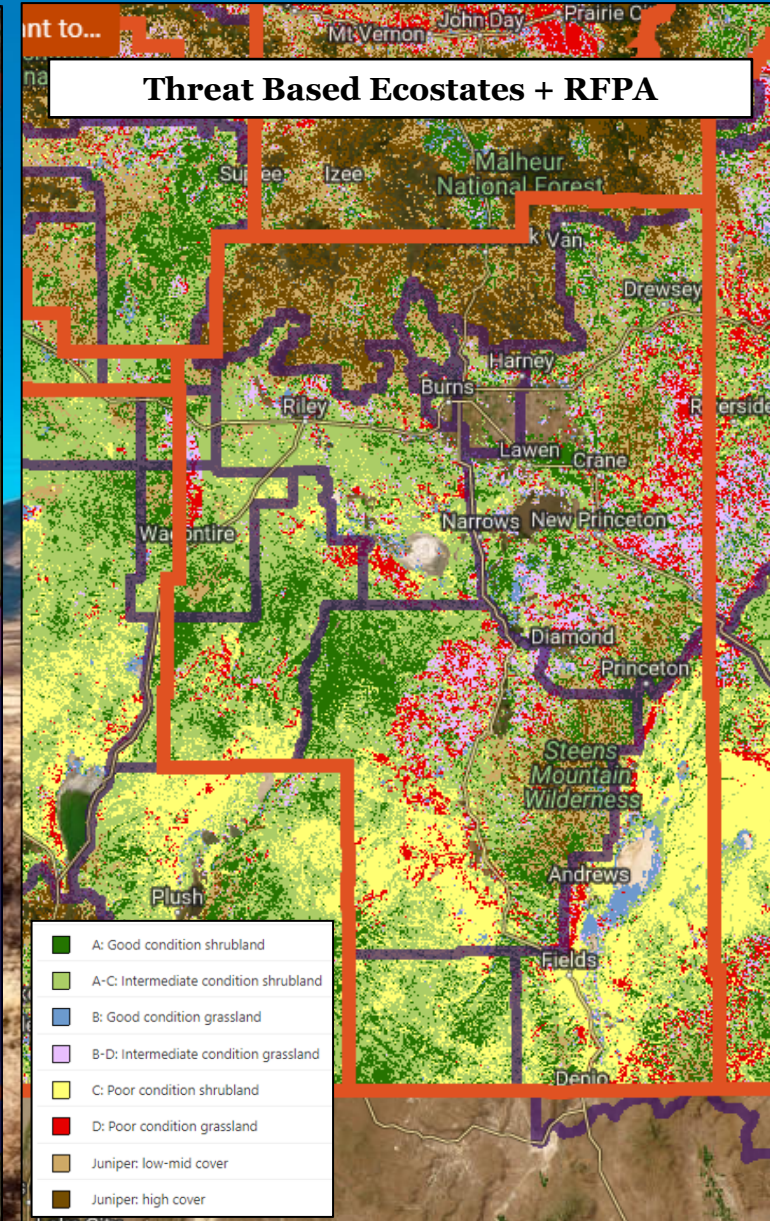
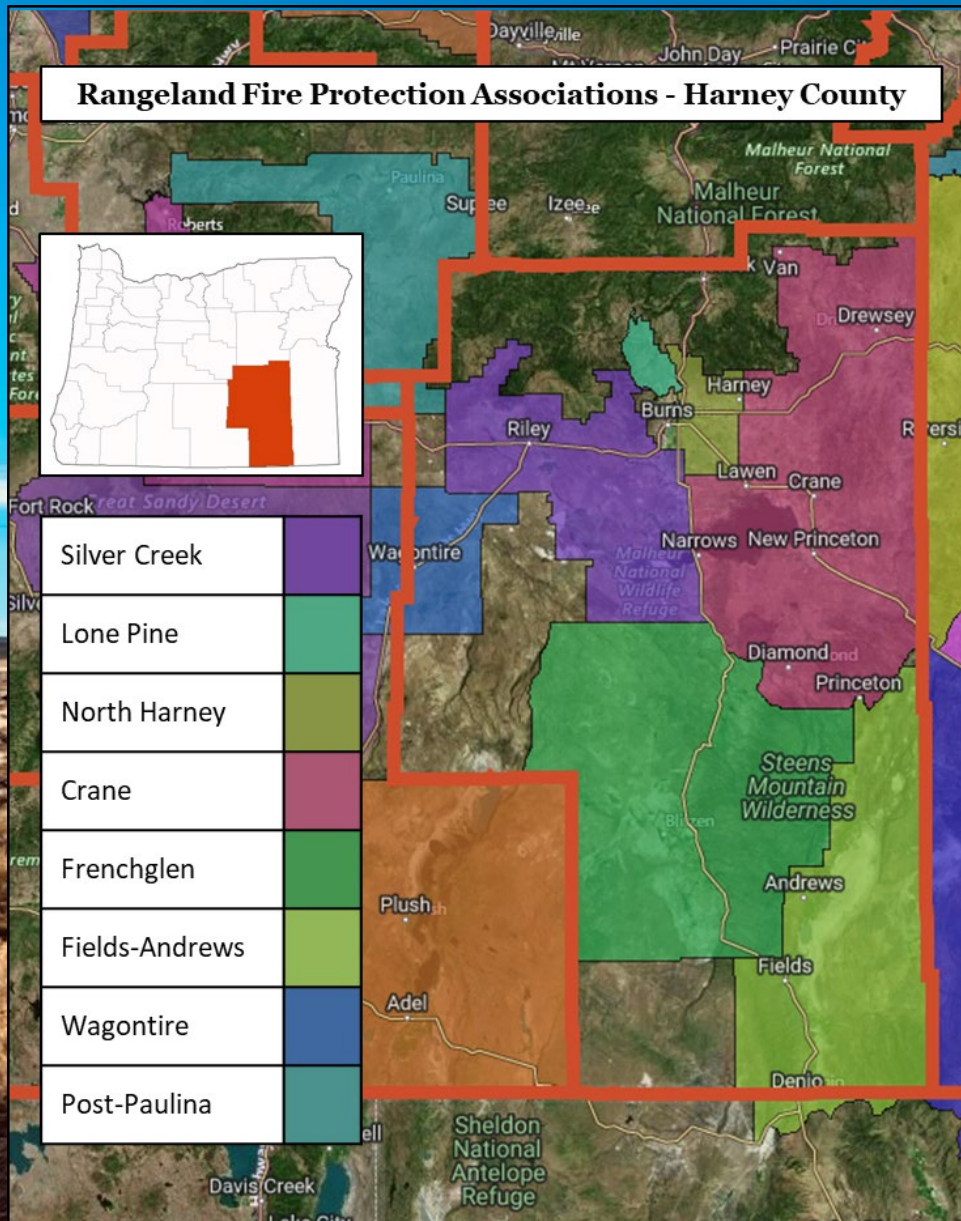
- What is the nature of the issue/threat?
- What scales does it occupy?
- Where/what are logical delineations?
- What kinds of action would be necessary to address it?



Defining a scale: Social considerations

- What is the size and scope of relationships and willingness to act?
 - “Where” are current domains of social action?
- Where is there an existing social logic for working together?





Additional considerations

- Important to link scales
 - Higher levels support local work
 - Horizontal linkages facilitate learning
- “Do we have the capacity to actually work at this scale?”
 - If the answer is yes, go forth!
 - If the answer is no, What enabling conditions are missing?



Questions?

katherine.wollstein@oregonstate.edu
u

Further reading

- Cash, D.W., Adger, W.N., Berkes, F., Garden, P., Lebel, L., Olsson, P., Pritchard, L., Young, O., 2006. Scale and cross-scale dynamics: Governance and information in a multilevel world. *Ecology and Society* 11(8).
- Paveglio, T.B., Boyd, A.D., Carroll, M.S. 2017. Re-conceptualizing Community in Risk Research. *Journal of Risk Research* 20(7).

Rangeland Ecology & Management 86 (2023) 9–17



ELSEVIER

Contents lists available at ScienceDirect

Rangeland Ecology & Management

journal homepage: www.elsevier.com/locate/rama



updates

Integrating Rangeland Fire Planning and Management: The Scales, Actors, and Processes[☆]

Katherine Wollstein*, Dustin D. Johnson

Authors are from the Department of Animal and Rangeland Sciences, Oregon State University, Eastern Oregon Agricultural Research Center, Burns, OR 97720, USA

Photo: Charles Lyons (MHRFPA)