

HOW DO WE KNOW IF WE'RE MOVING THE NEEDLE?



Creating a shared vision for measuring restoration success

Jackie Cupples, USFWS





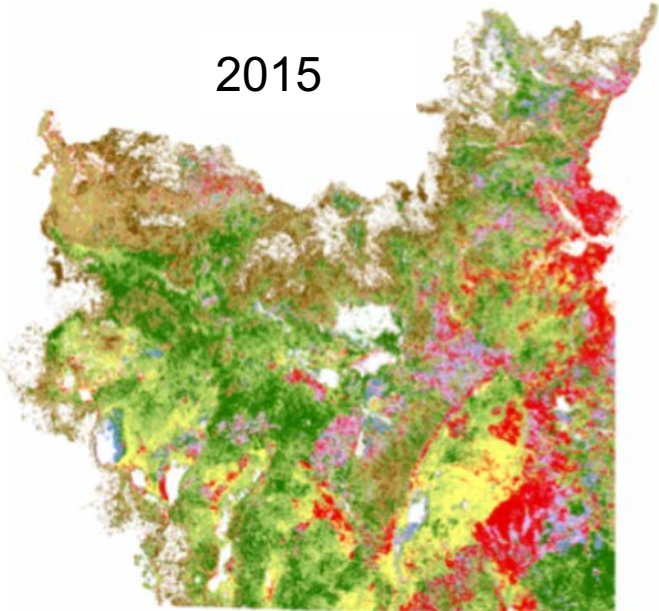
Why?



Photo credit: S. Hyllested

Did we increase the quality and quantity of sagebrush habitat?

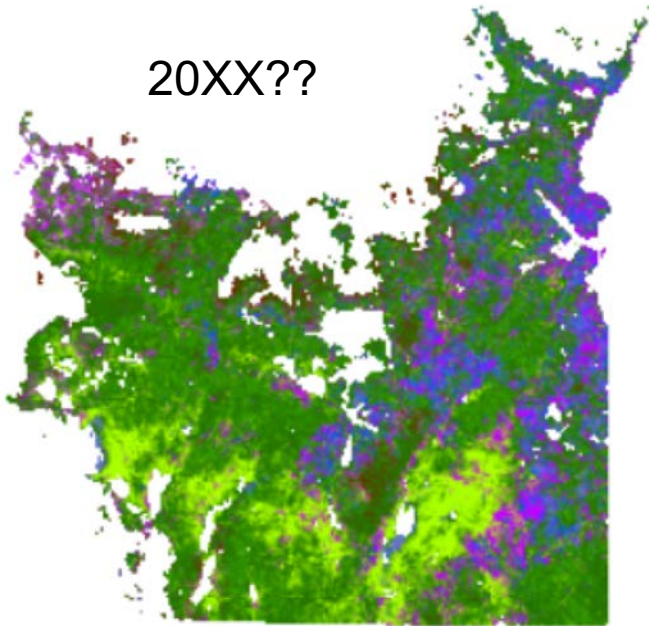
2015



- Vegetation condition (ecostate)**
- A: Good condition shrubland
 - A-C: Intermediate condition shrubland
 - B: Good condition grassland
 - B-D: Intermediate condition grassland
 - C: Poor condition shrubland
 - D: Poor condition grassland
 - Juniper: low-mid cover
 - Juniper: high cover



20XX??



- Vegetation condition (ecostate)**
- A: Good condition shrubland
 - A-C: Intermediate condition shrubland
 - B: Good condition grassland
 - B-D: Intermediate condition grassland
 - C: Poor condition shrubland
 - D: Poor condition grassland
 - Juniper: low-mid cover
 - Juniper: high cover

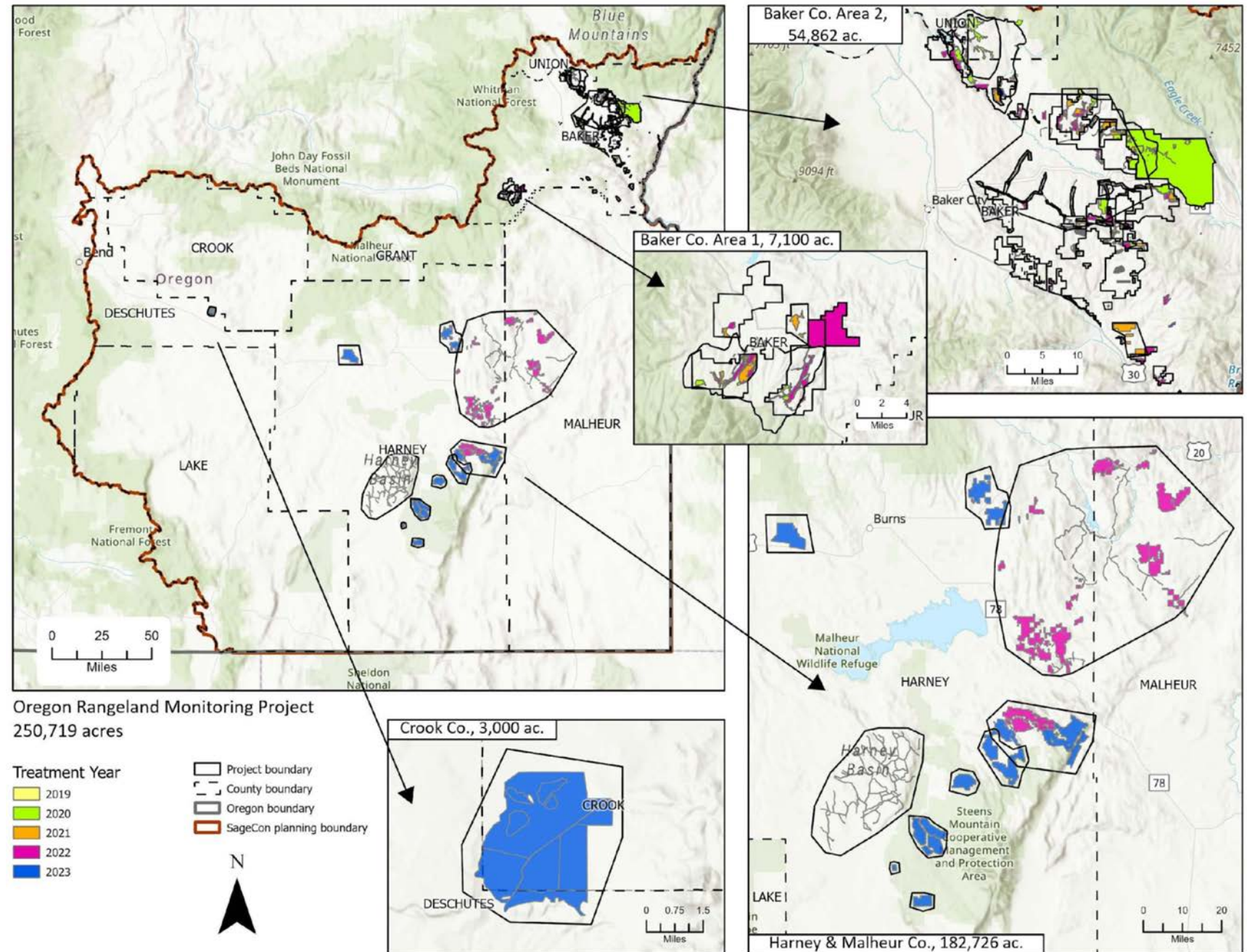
Oregon Rangeland Monitoring Project

- 275 individual polygons
- 250,719 acres
- Private, state, federal
- Implementation dates 2019-2023

2022 & 2023 surveys completed to date:

- 874 Rapid ocular assessment/plot ecostate

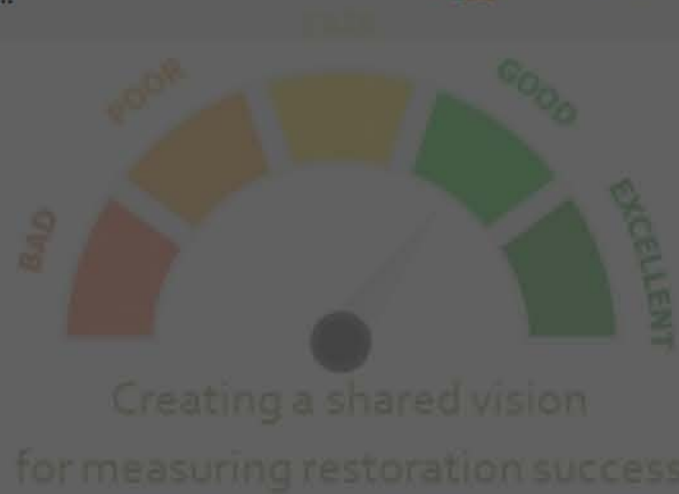
Land Treatment Exploration Tool
<https://usgs.gov/ltet>






Creating a shared vision for measuring restoration success

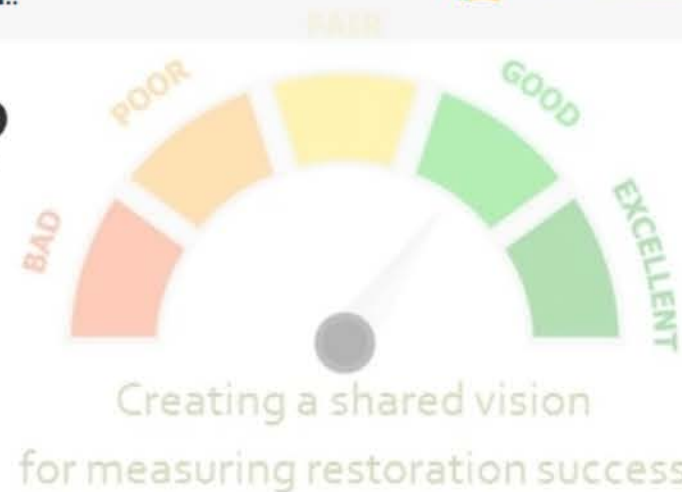
success look like to you?



 Replace slide

 Reload

How do you currently measure success?



0%

A: I don't! (Who has time and money??)

0%

B: Photos

0%

C: Detailed quantitative vegetation measurements...

0%

D: Rapid quantitative vegetation measurements...

0%

E: Qualitative vegetation measurements...

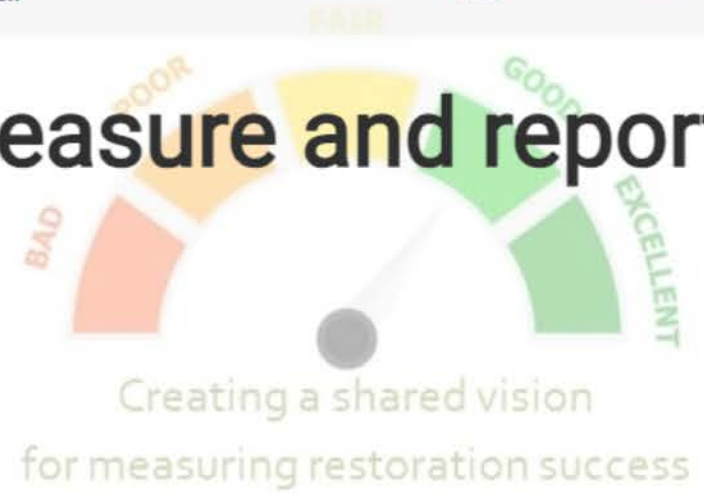
0%

F: Remote sensing or drones

0%

Something else

What resources do you need to better measure and report success?



Thank you!

Want to help build the vision?

Or to learn more about the Oregon
Rangeland Monitoring Project?

Jackie Cupples

jacqueline_cupples@fws.gov

SageCon 2022 ORMP presentation:

<https://youtu.be/kAtmhAcrGjM?t=10168>

To learn more about the Land Treatment
Exploration Tool:

Michelle Jeffries

mjeffries@usgs.gov

<https://usgs.gov/ltet>



Creating a shared vision
for measuring restoration success