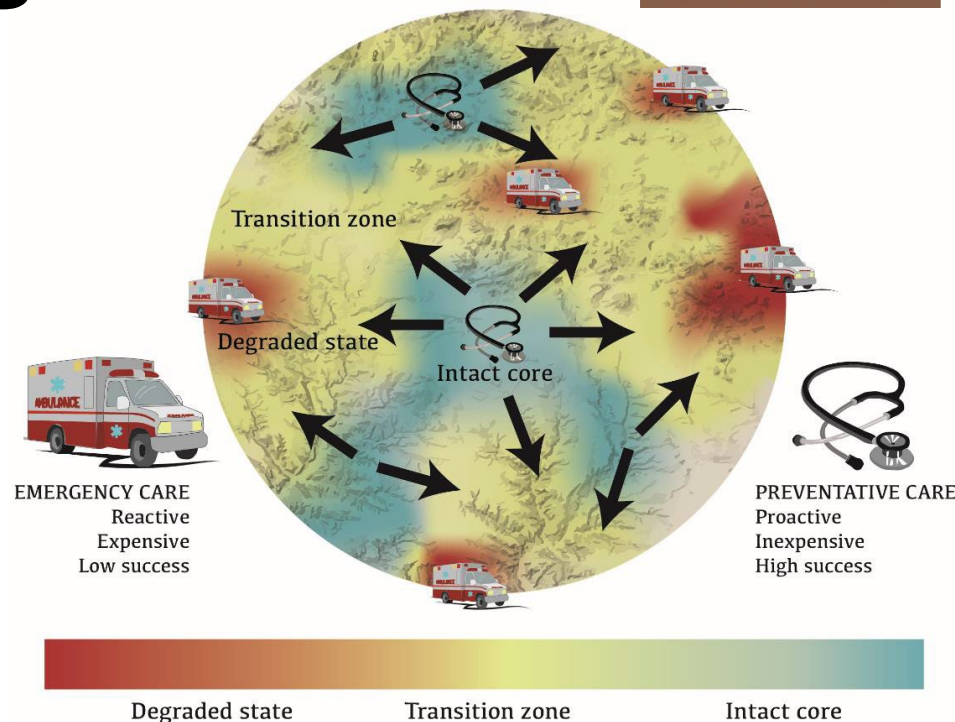
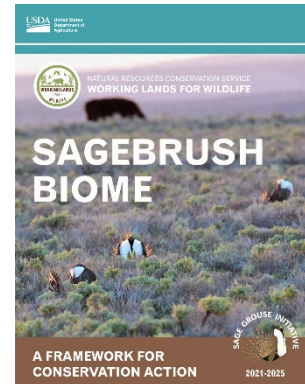


# Principles and spatial thinking for a proactive and strategic path forward

SageCon Summit  
November 3, 2022

*Jeremy Maestas, Sagebrush Ecosystem Specialist  
USDA-NRCS West National Technology Support Center  
Bend, Oregon*



Credit: USDA-NRCS, Working Lands for Wildlife

**BEFORE**



**HGTV**

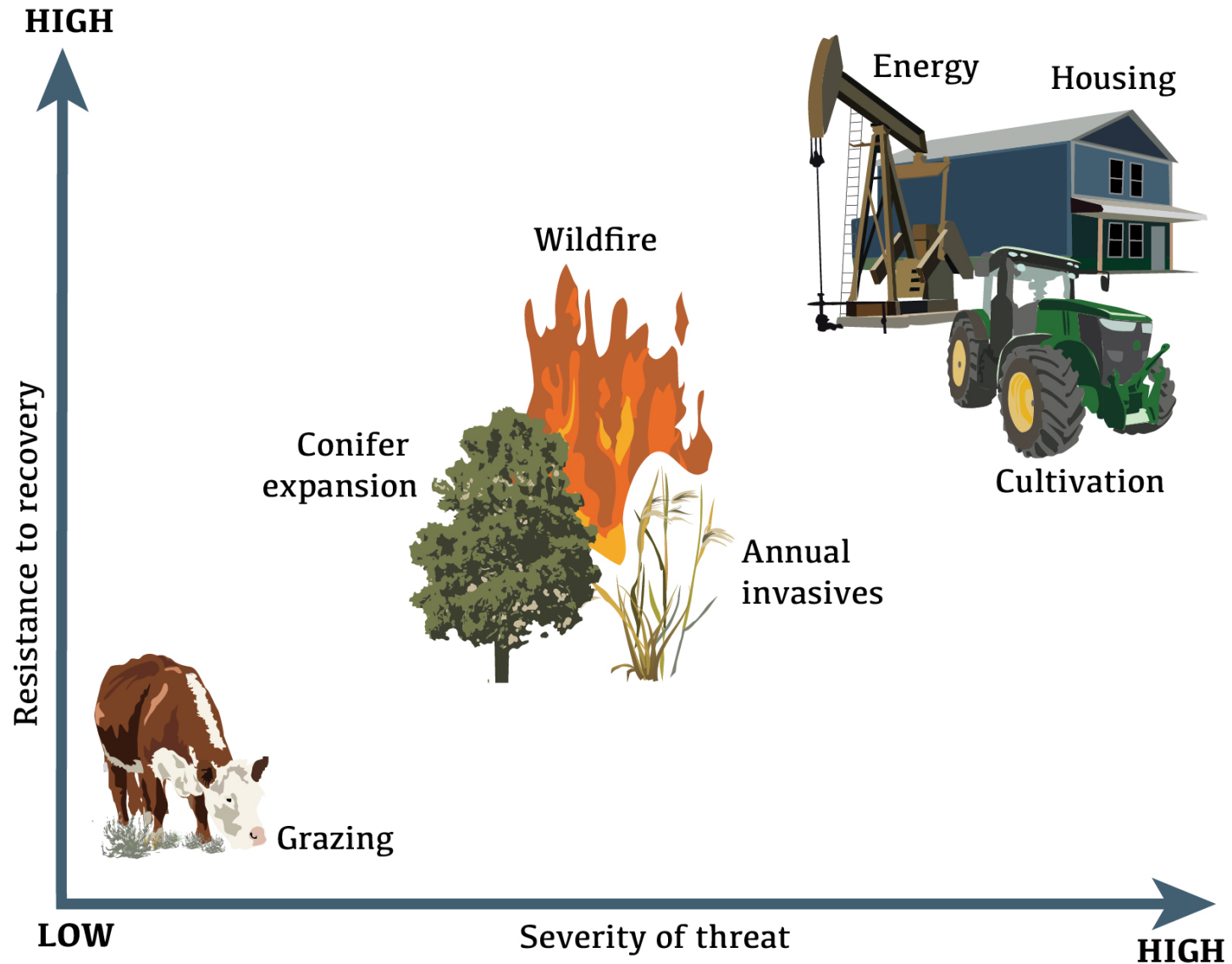
**AFTER**



**Are we rearranging  
furniture in a house  
that's burning down?**



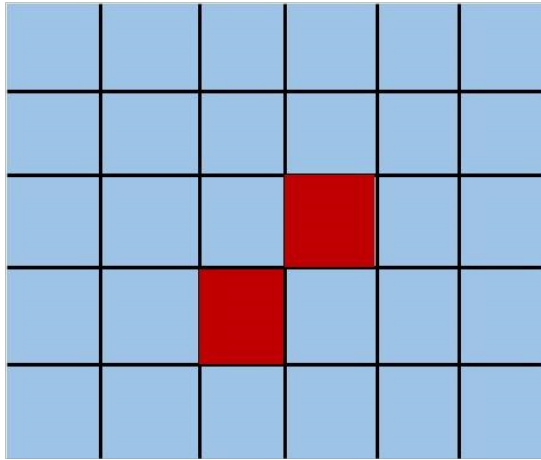
# *Need to address the big threats first*



Credit: USDA-NRCS, Working Lands for Wildlife

# *Landscape context informs management*

A.



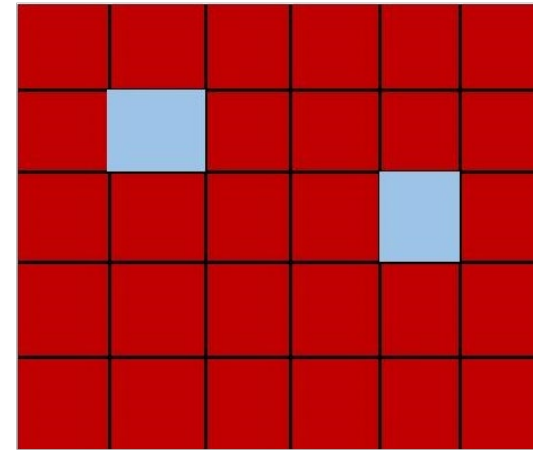
Risk Management:  
Protection, Prevention, Preparedness,  
Early Detection Rapid Response



No/low threats

Regional state transition

B.

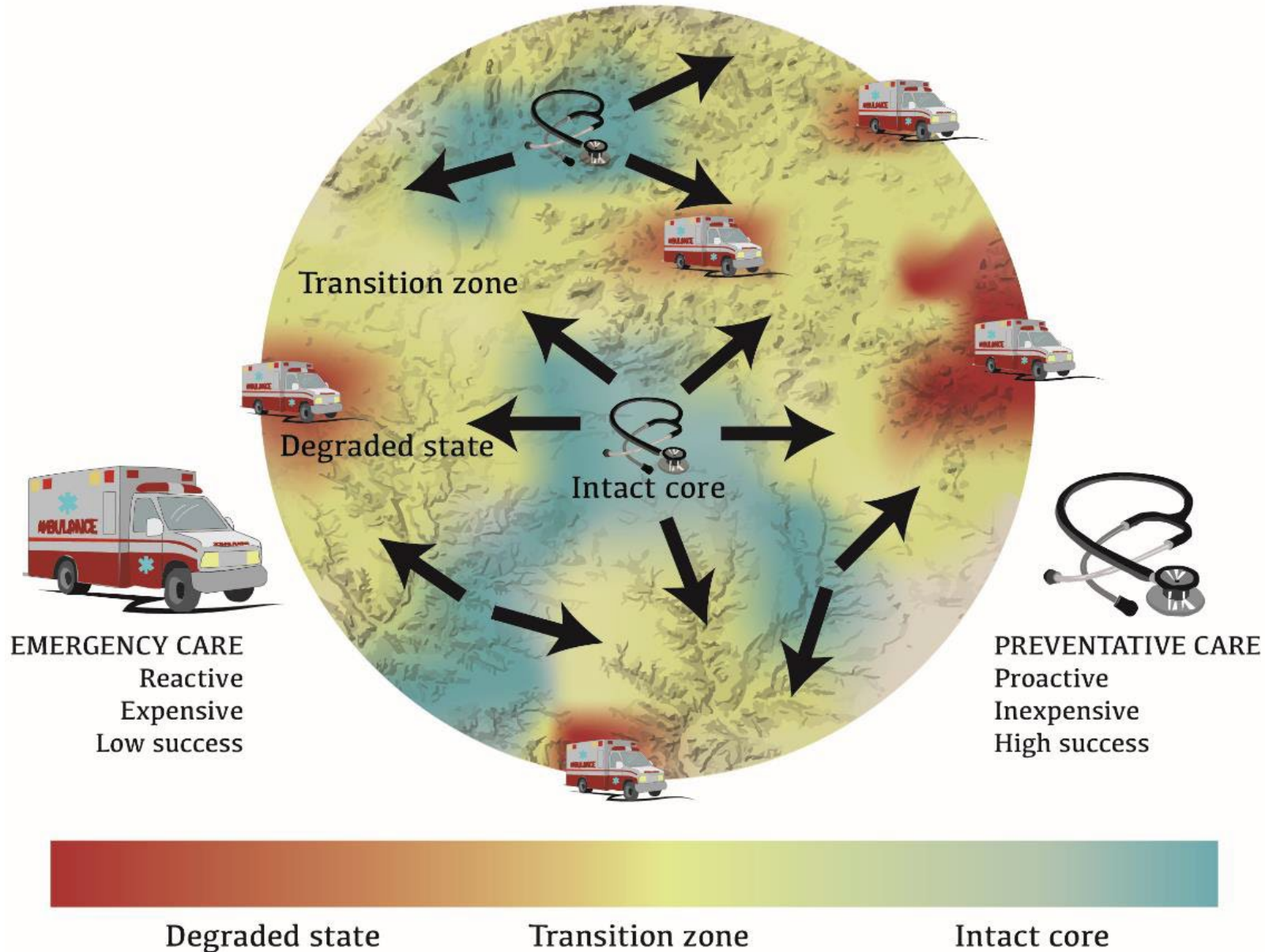


Crisis Management:  
Mitigation, Rehabilitation



Threat dominated

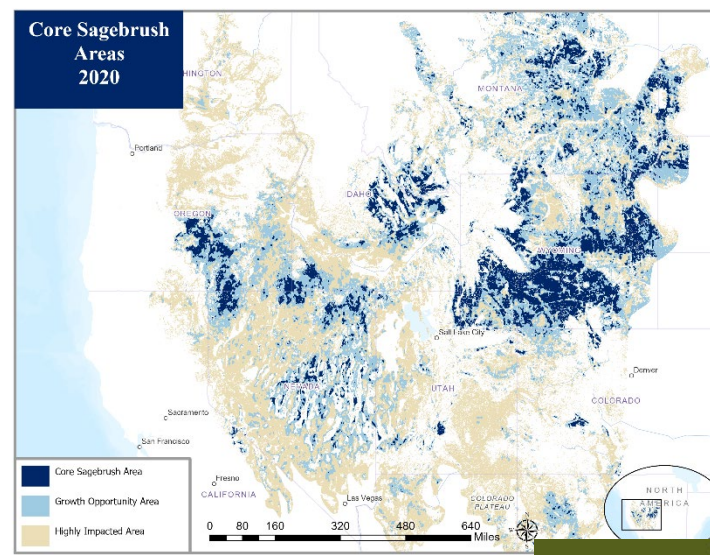
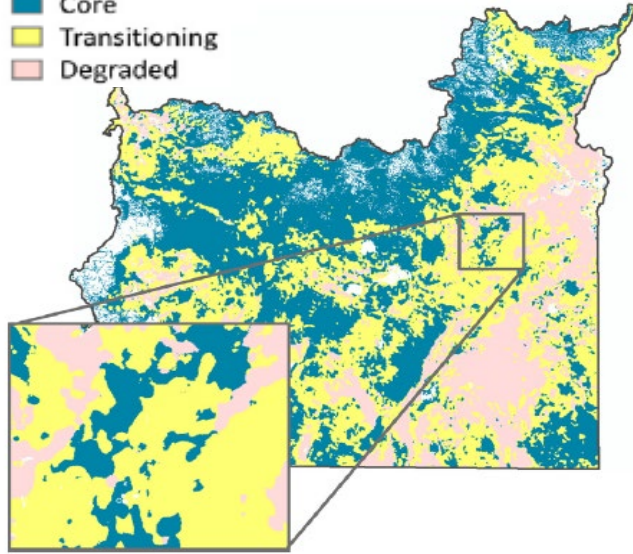
# Defend the Core, Grow the Core





# SageCon Invasives Initiative

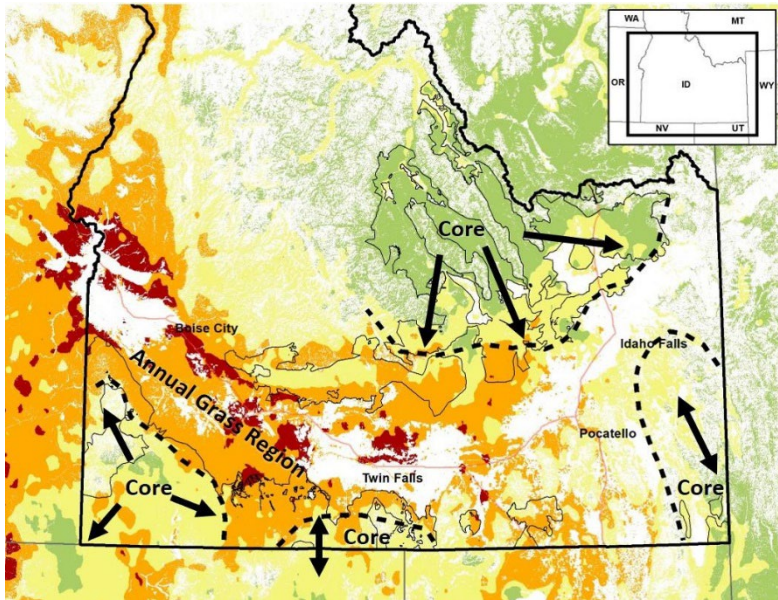
- Core
- Transitioning
- Degraded



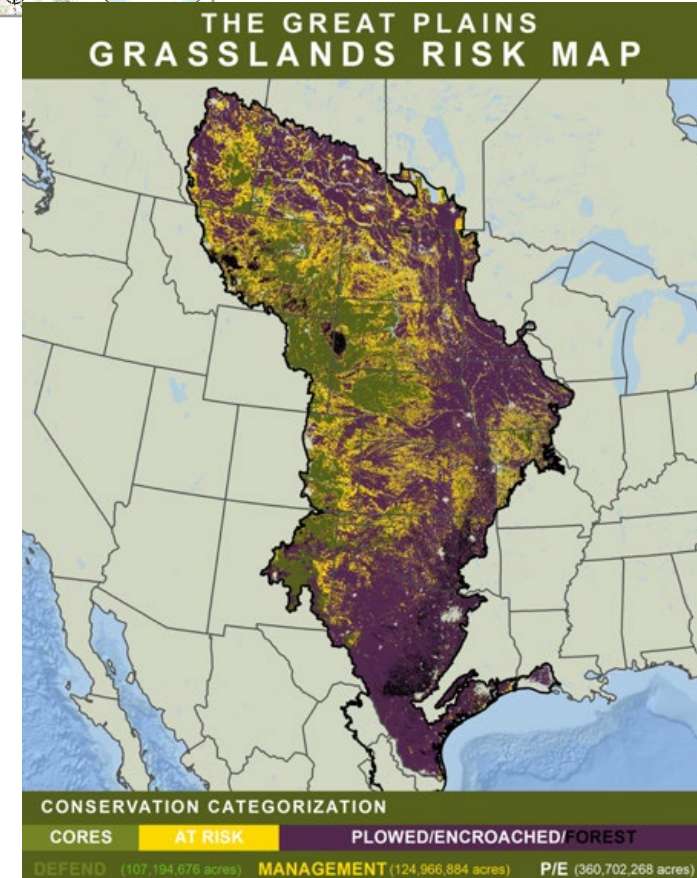
# Sagebrush Conservation Design



# Idaho Cheatgrass Challenge

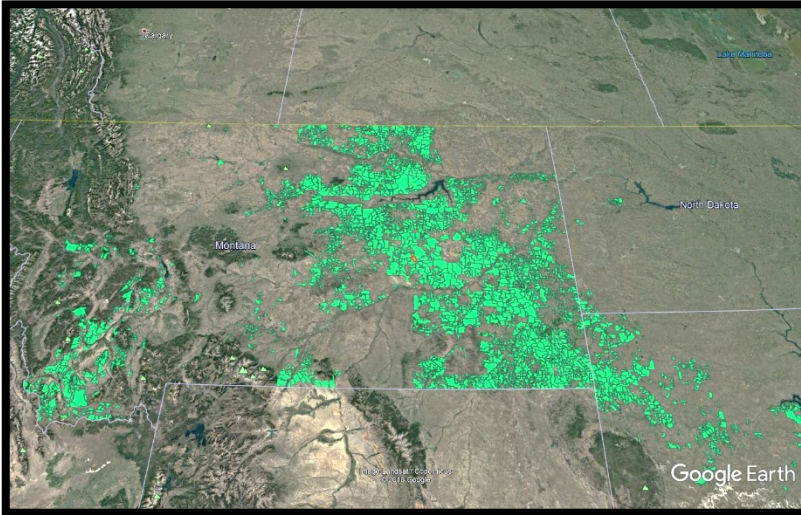


# Great Plains Grasslands

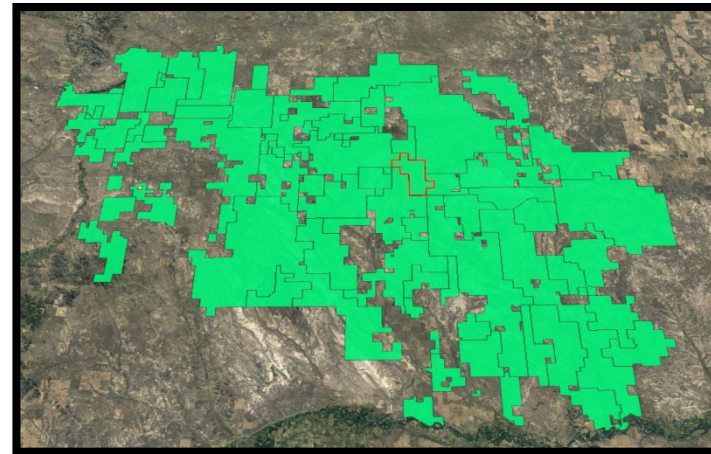


# ***This way of thinking is scalable***

Region/State



County/District/Watershed



Pasture/ranch



**Find an anchor point for conservation efforts!**

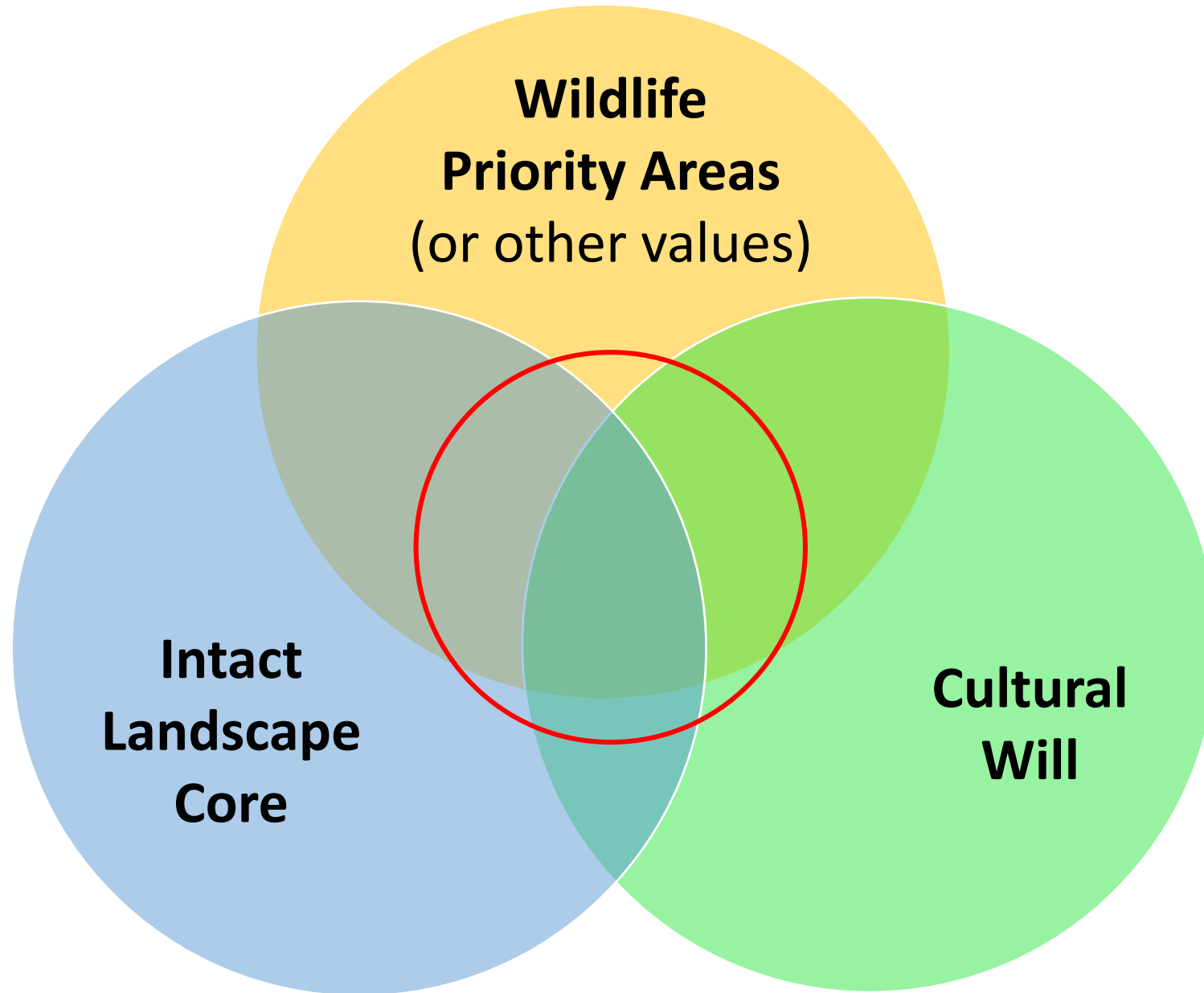
# ***Assess potential utility and role of maps in decision-making***

<b>Key Questions</b>	<b>Planning Step</b>	<b>Potential Utility and Role of Maps*</b>
Where are we now?	Inventory and assessment	High
Where do we want to be?	Goals	Moderate
How do we get there?	Strategy and prioritization	High
What needs to change and when?	Objectives	Moderate-to-high
What are we going to do?	Implementation	Low-to-moderate
How will we know when we get there?	Monitoring	High

\*Utility at each step depends upon the specific attribute of management interest (e.g., functional groups, species, cover, production) relative to what the available maps provide, scale of management unit, and whether the level of map error is acceptable for the decisions being made.



# ***Finding the sweet spot for large-scale action***



A wide-angle photograph of a vast, flat landscape covered in dense sagebrush and low-lying vegetation. In the middle ground, a white boat with a blue stripe is mounted on a blue trailer. To the left, a dark-colored truck is partially visible. The horizon is flat, with distant mountains under a cloudy sky.

Keeping the Sagebrush Sea afloat:

- Constant vigilance in **Core Areas**
- Fight tooth and nail in **Growth Areas**
- **Elsewhere** keep negative impacts at bay