



Partnerships get strategic across big landscapes of Malheur County

Presented by Julie Unfried

Coordinator for the Vale Sage-grouse Local Implementation Team

SageCon Summit 26 September 2023

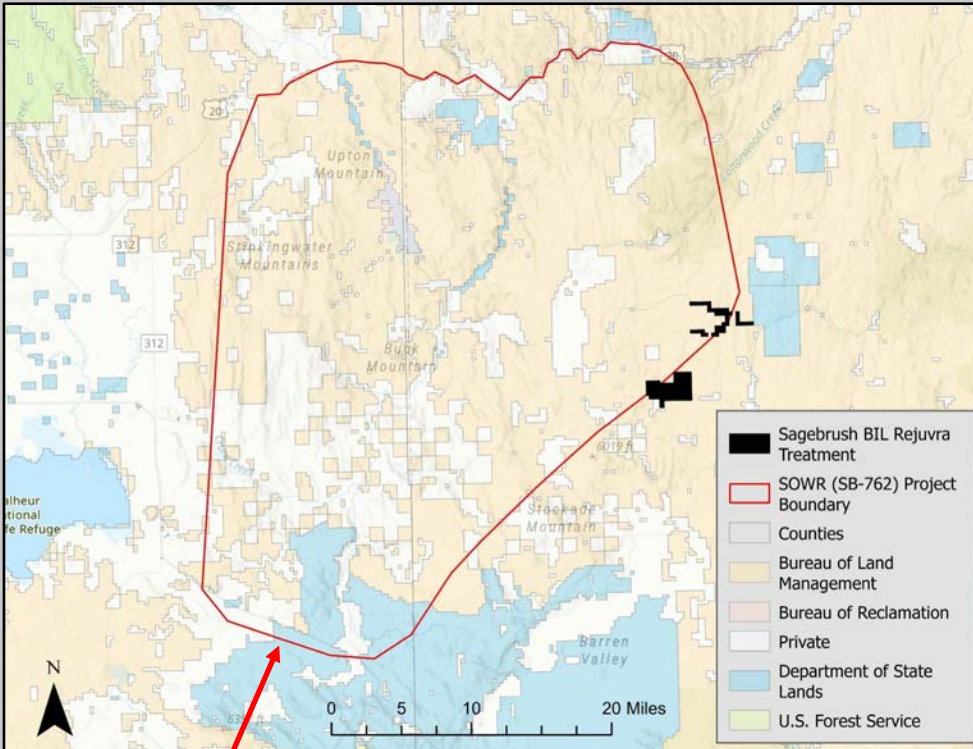
Outline

1. Vale LIT Update
2. Lessons learned to streamline implementation and how this benefits everyone: ecosystem, bird, implementers, landowners, funders, etc.



OR Senate Bill 762: Landscape Resiliency Program

- HCWC invited Vale LIT to develop one joint proposal.
- Admin. support provided by HDP allowed Vale LIT partners to focus on implementation!



SOWR Plan Treatments*

- **74,909** pasture acres of IAGs sprayed.
- **1,800** acres reseeding **2,100** acres with native plant species.
- **~120 miles** of roadside IAGs sprayed.
- **5,002** acres juniper cutting and piled .
- Collected and cleaned native plant seeds in Harney and Malheur Counties.

*Source: HDP website <https://harneywildfirecollaborative.org/projects/southeast-oregon-wildfire-resiliency/>

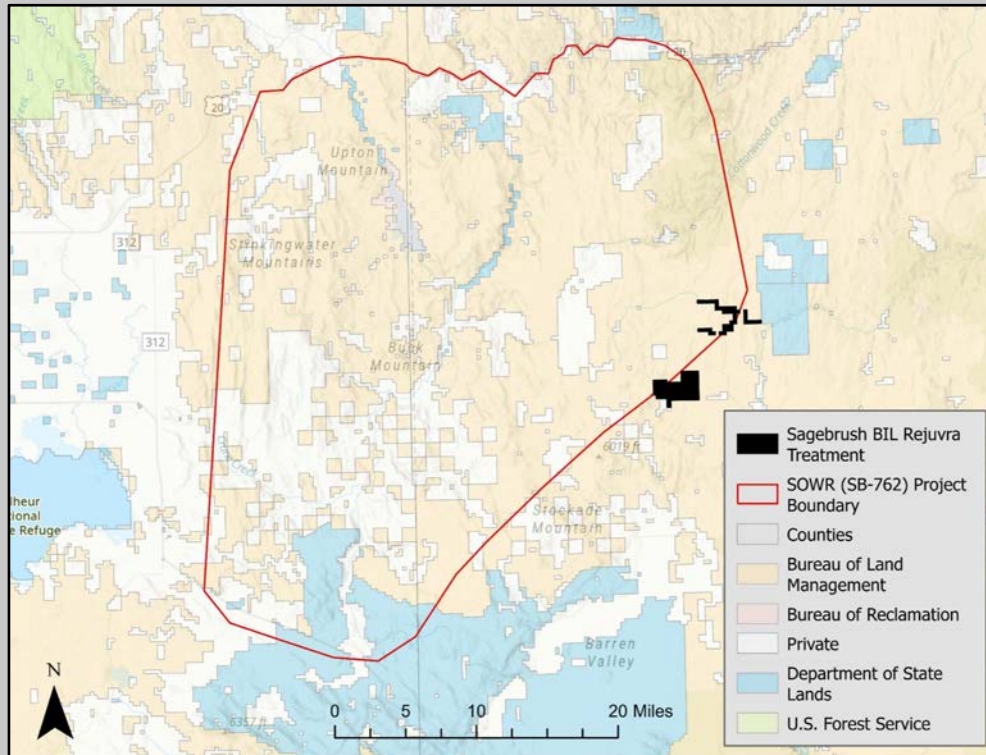
Federal Money: Everything, Everywhere All at Once!





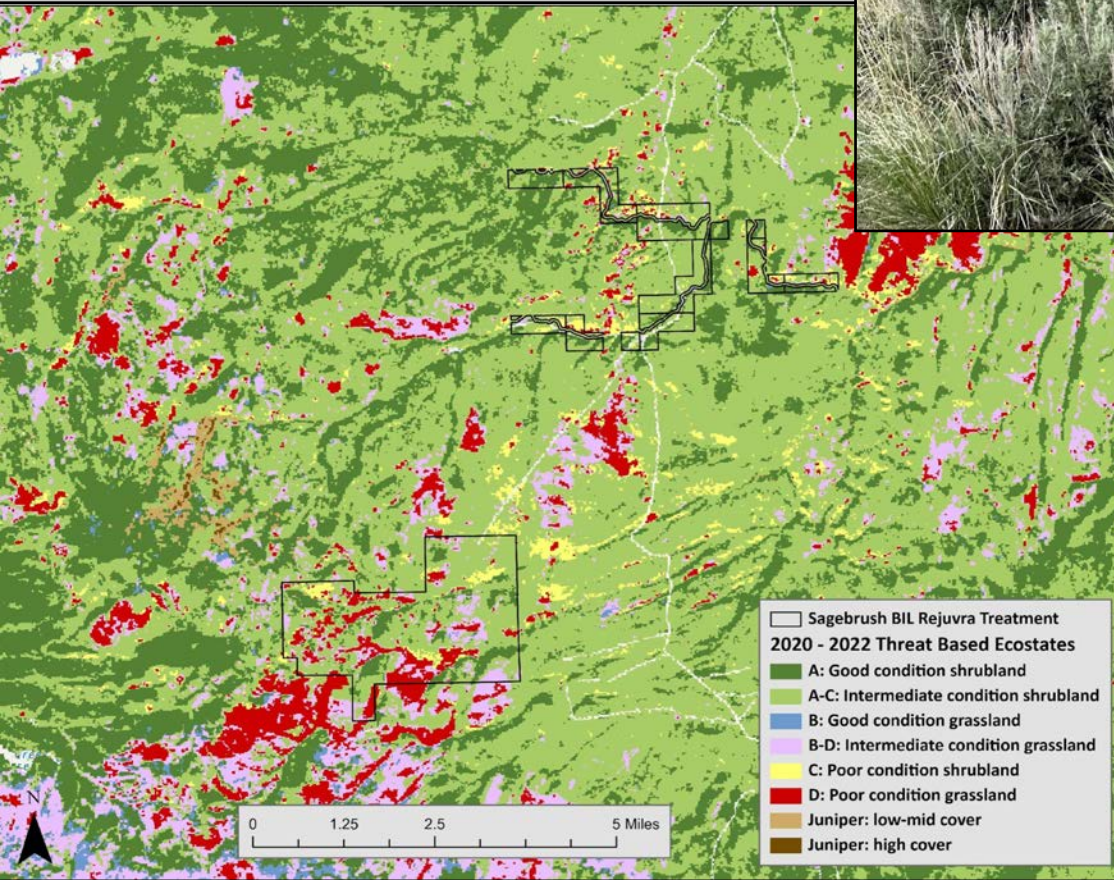
Sagebrush BIL

- Initial proposal developed by MCWD, MWC, MSWCD, TCCWMA, DSL, and PF,
 - \$2.3 million to treat ~22,000 acres of state and private ***ambitious request!***
 - Juniper and IAG treatments.
 - Malheur and Baker Counties.
 - Private and state lands (federal lands not eligible).
 - Adjacent to other investments (e.g., Baker FIP, SGI, SOWR, CCAA).
 - Written in 5 weeks.



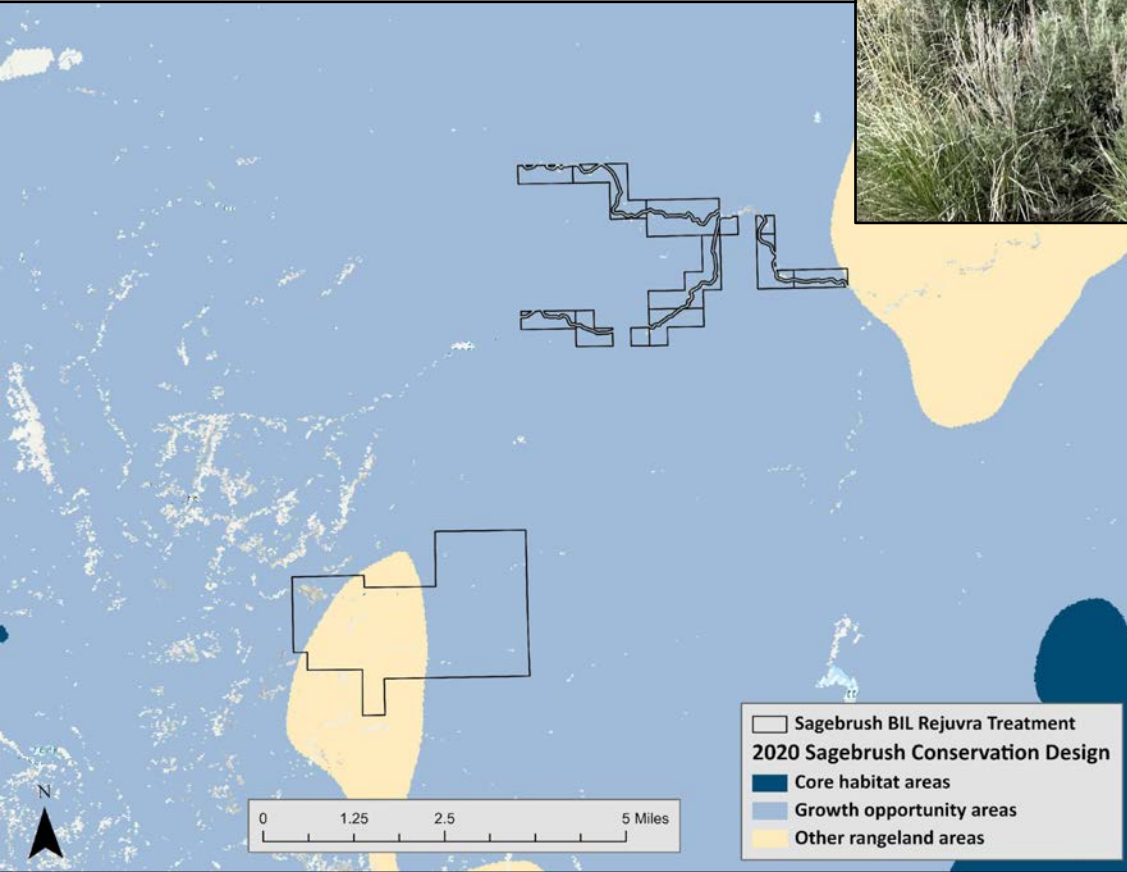
Sagebrush BIL

- Awarded **\$238,400**
- Sprayed **3,176 acres** of IAGs



Sagebrush BIL

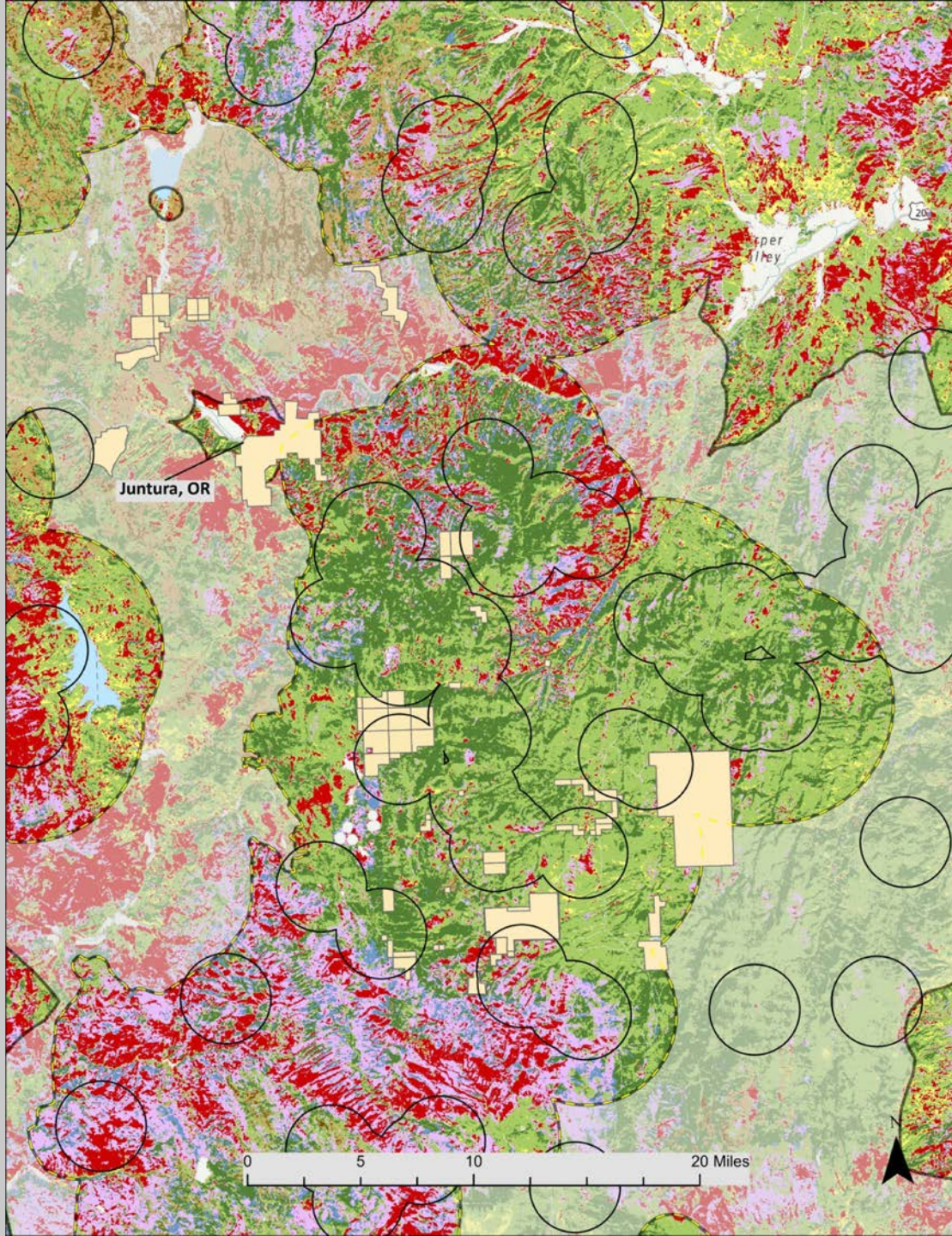
- Awarded **\$238,400**
- Sprayed **3,176 acres** of IAGs

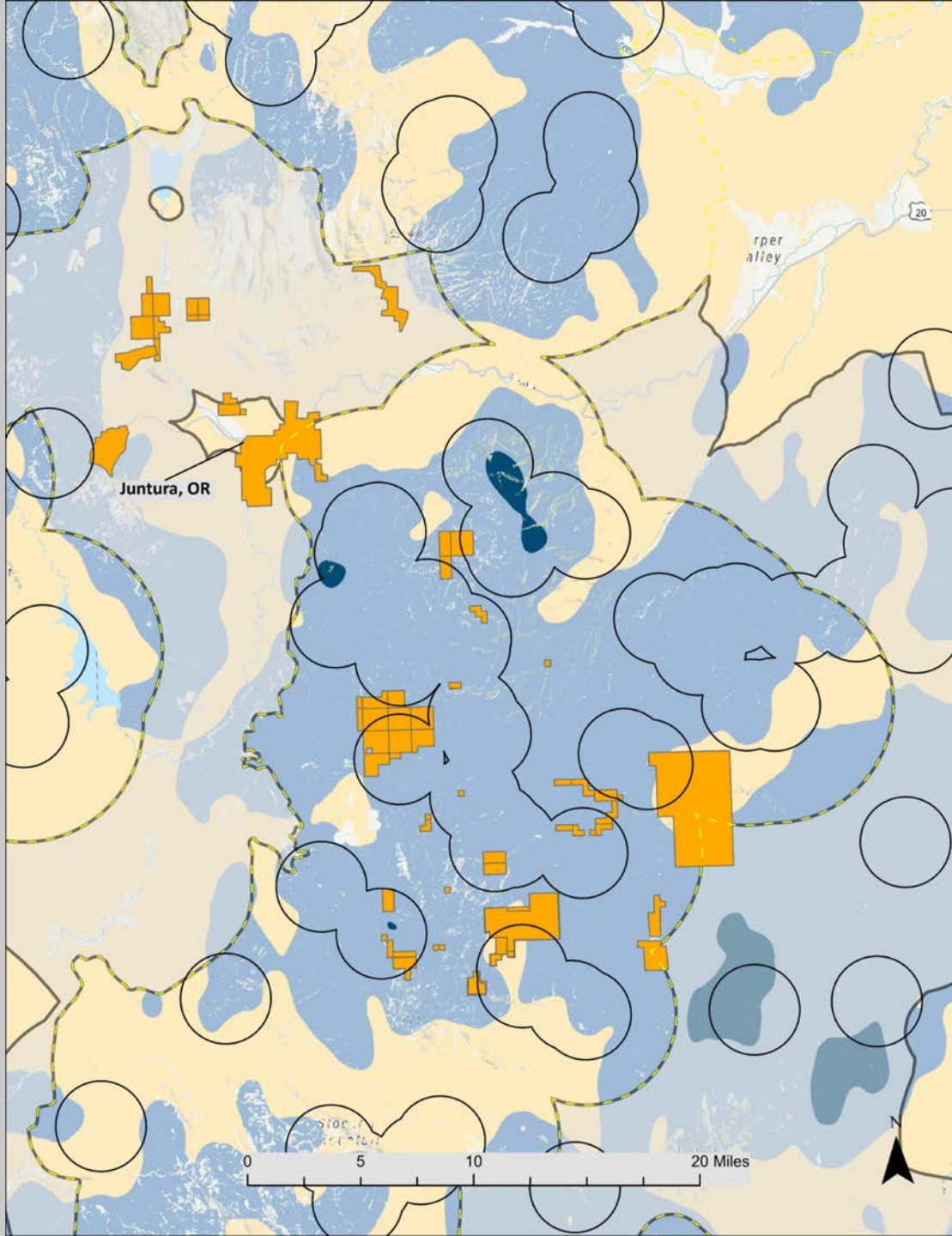




Wildfire BIL

- Quickly repackaged the Sagebrush BIL proposal!
- Awarded \$1,700,000 in July 2023.
- ~14,000 IAG and juniper treatments in Malheur and Baker Cos.

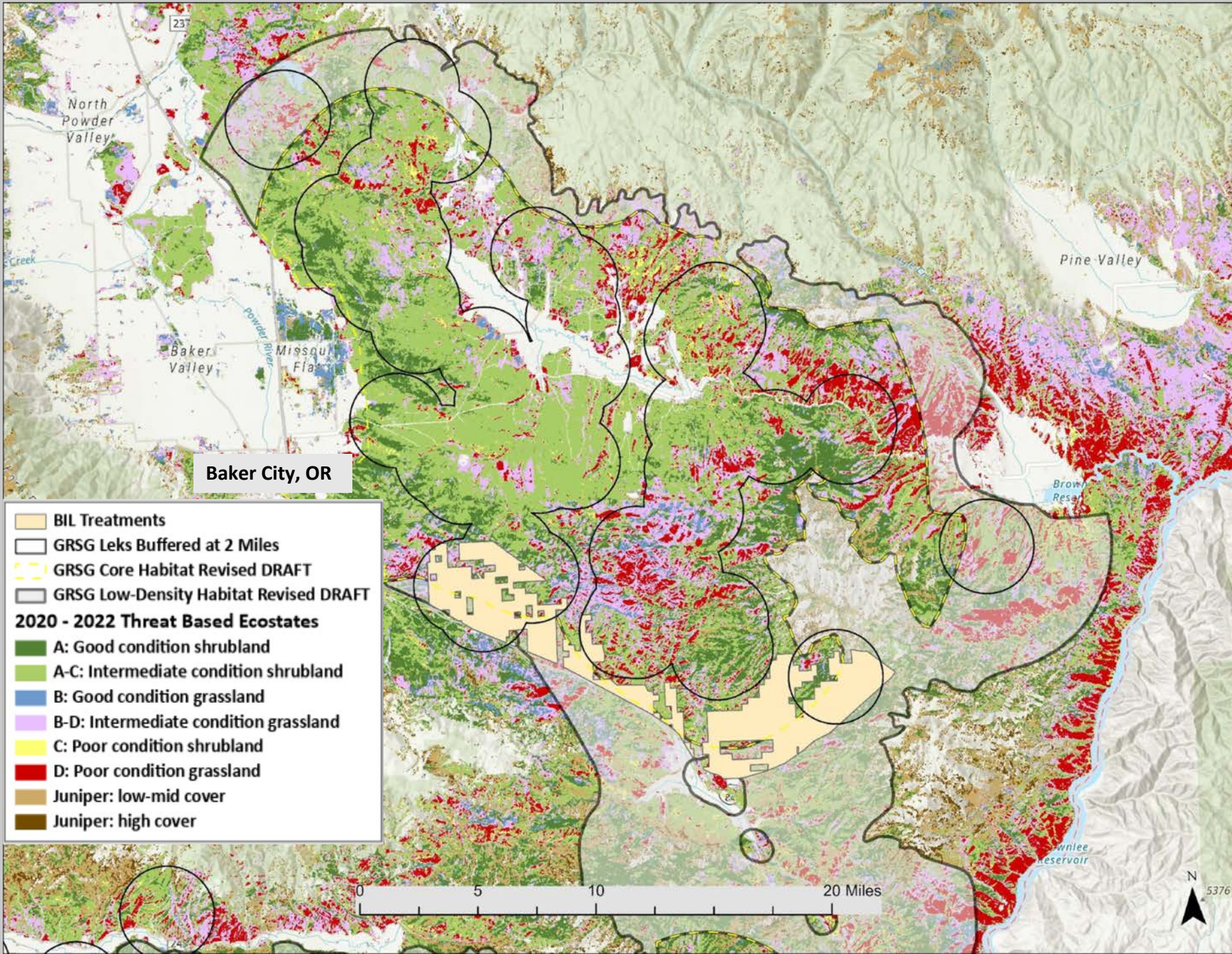




- BIL Treatments
- GRSG Leaks Buffered at 2 Miles
- GRSG Core Habitat Revised DRAFT
- GRSG Low-Density Habitat Revised DRAFT

2020 Sagebrush Conservation Design
Definition

- Core habitat areas
- Growth opportunity areas
- Other rangeland areas

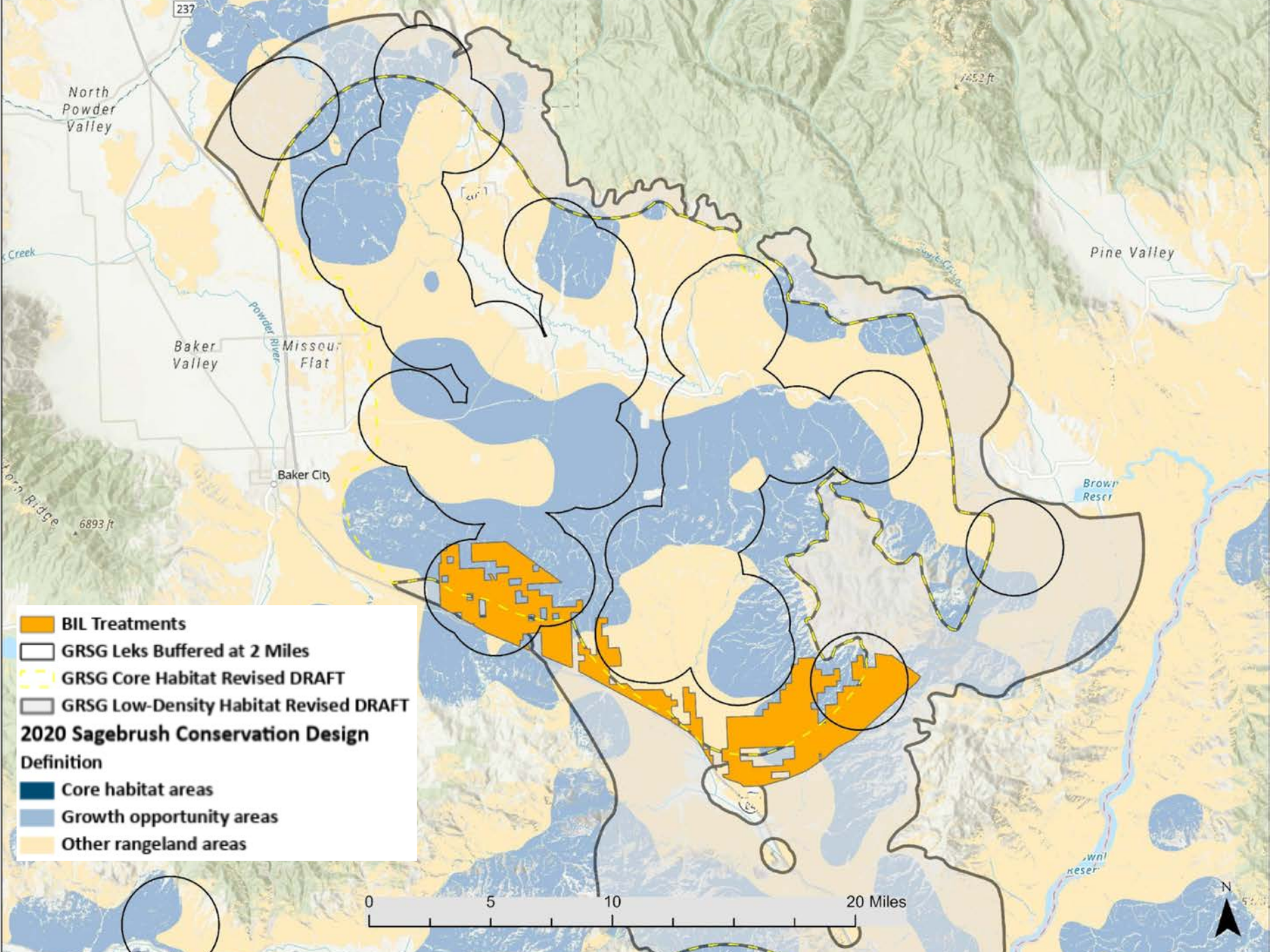


Baker City, OR

- BIL Treatments
 - GRSG Leaks Buffered at 2 Miles
 - GRSG Core Habitat Revised DRAFT
 - GRSG Low-Density Habitat Revised DRAFT
- 2020 - 2022 Threat Based Ecostates**
- A: Good condition shrubland
 - A-C: Intermediate condition shrubland
 - B: Good condition grassland
 - B-D: Intermediate condition grassland
 - C: Poor condition shrubland
 - D: Poor condition grassland
 - Juniper: low-mid cover
 - Juniper: high cover

0 5 10 20 Miles





2020 Sagebrush Conservation Design Definition

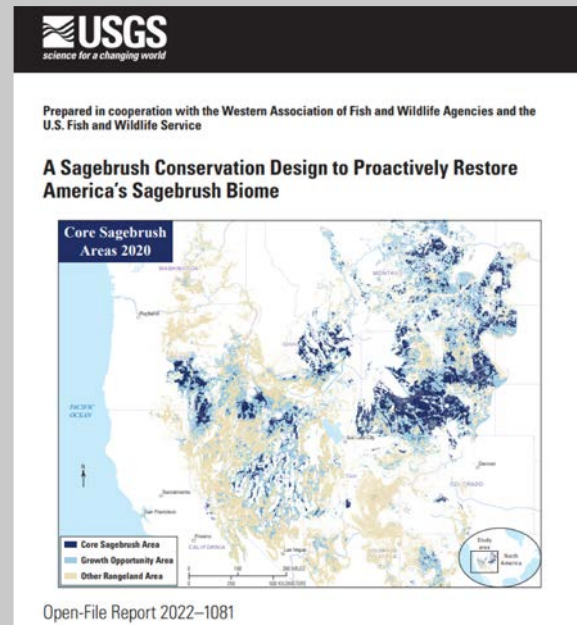
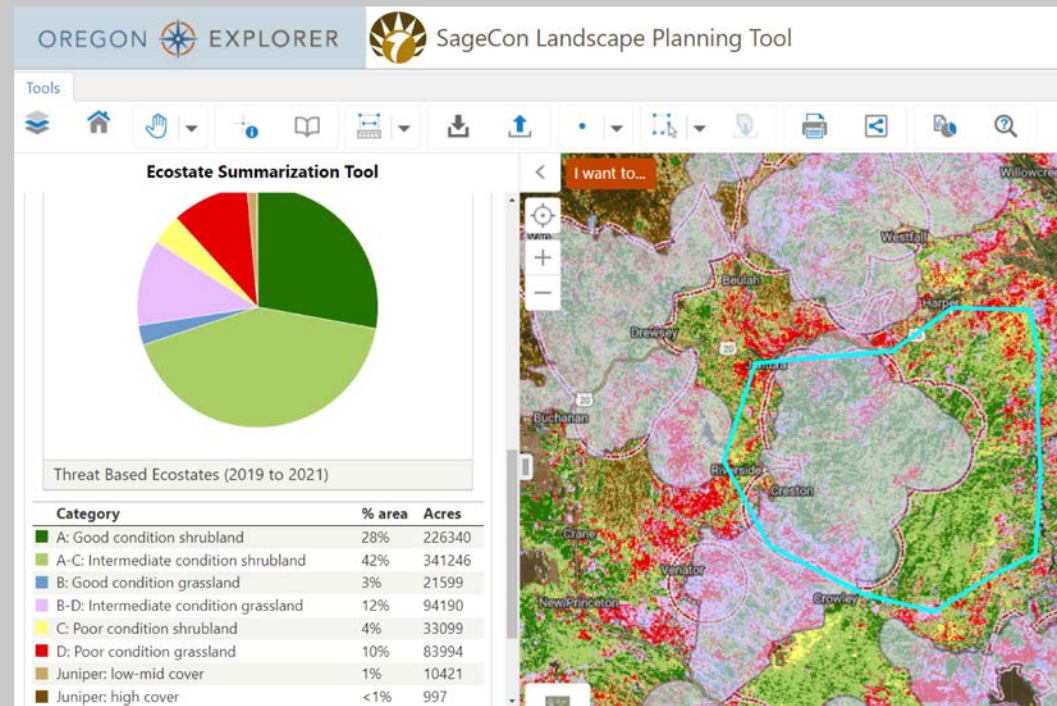
- BIL Treatments
- GRSG Leks Buffered at 2 Miles
- GRSG Core Habitat Revised DRAFT
- GRSG Low-Density Habitat Revised DRAFT
- Core habitat areas
- Growth opportunity areas
- Other rangeland areas

Sagebrush and Wildfire BIL

- **\$1,938,400**
invested or allocated
through BIL to date.
- **~17,200 acres** of
treatment from 2023 –
2028.

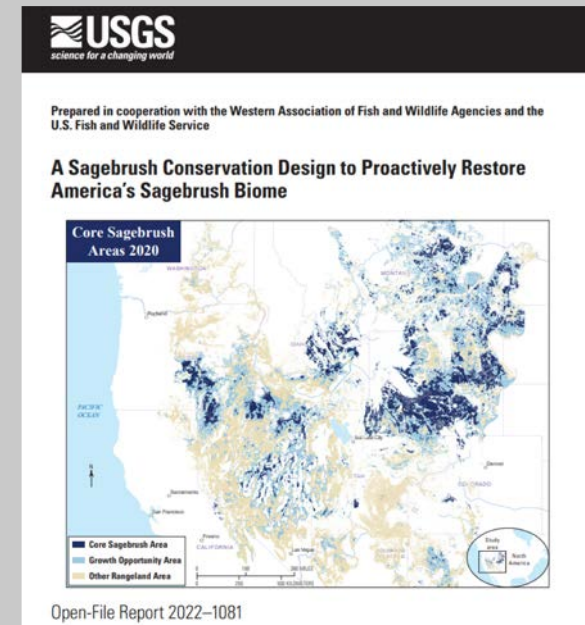
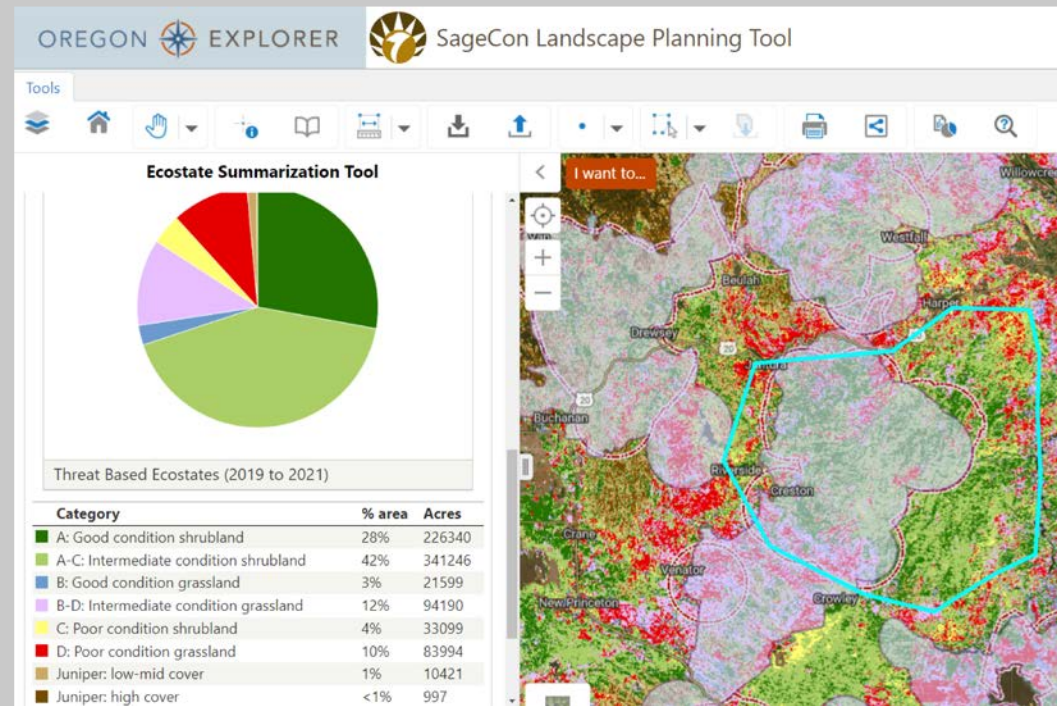


Doing More, Better!



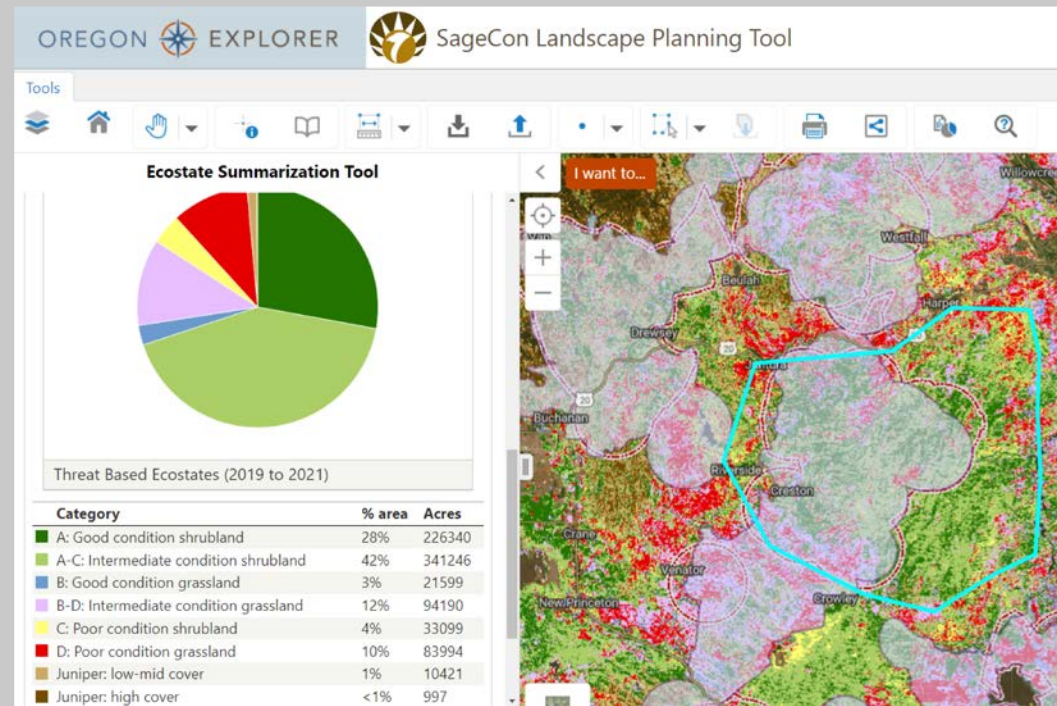
Doing More, Better!

- **BIOLOGICAL/ECOLOGICAL DATA**
- Sage-grouse PACs
- “Core” sagebrush habitat



Doing More, Better!

- BIOLOGICAL/ECOLOGICAL DATA
- Sage-grouse PACs
- “Core” sagebrush habitat
- **TECHNICAL RESOURCES**
- Sagebrush Conservation Design
- SageCon’s Landscape Planning Tool



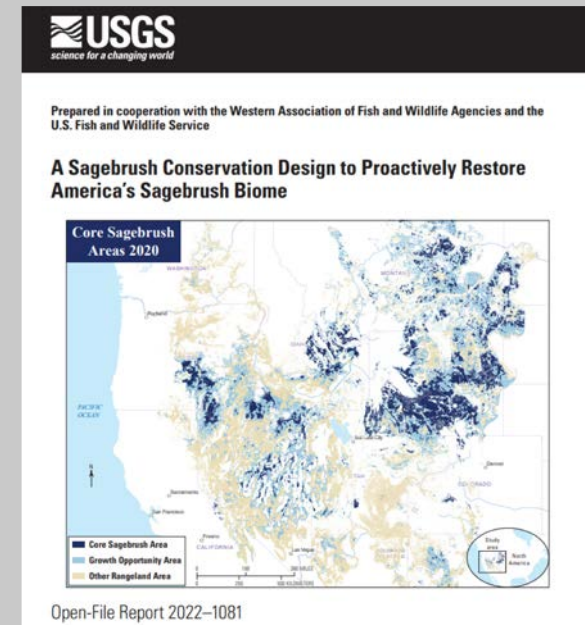
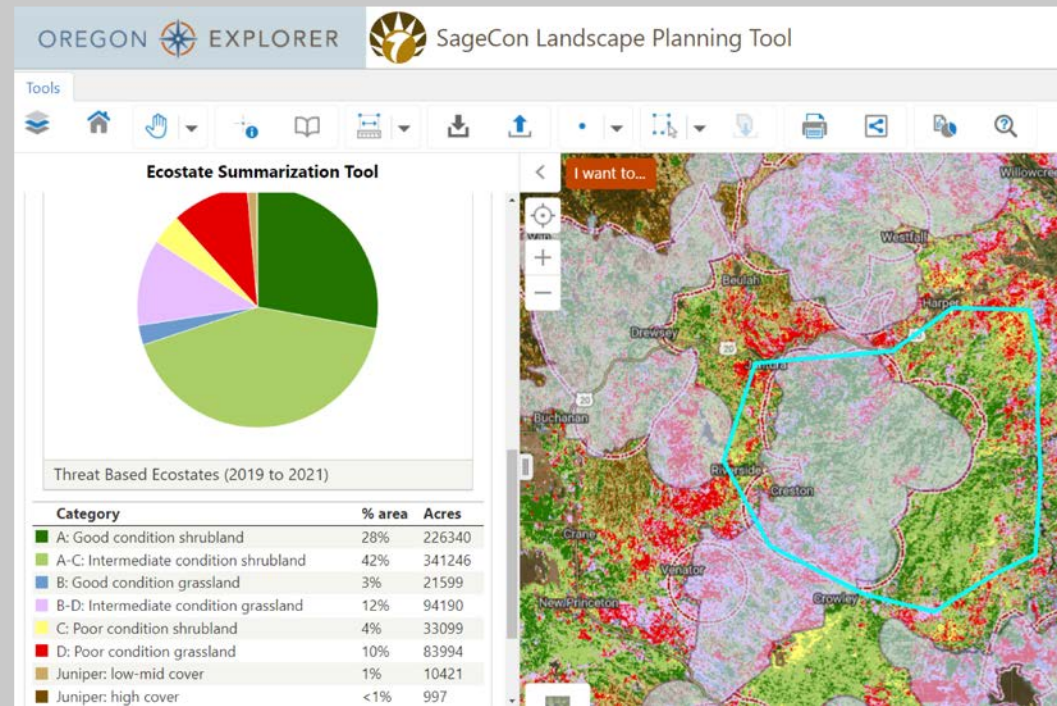
Prepared in cooperation with the Western Association of Fish and Wildlife Agencies and the U.S. Fish and Wildlife Service

A Sagebrush Conservation Design to Proactively Restore America's Sagebrush Biome

Open-File Report 2022-1081

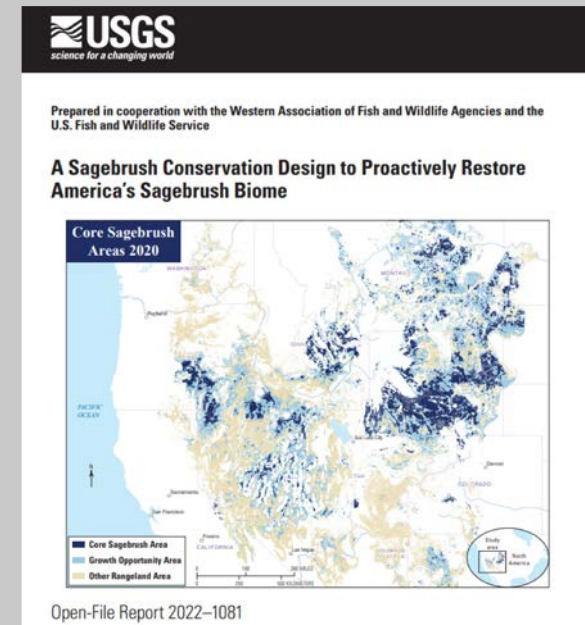
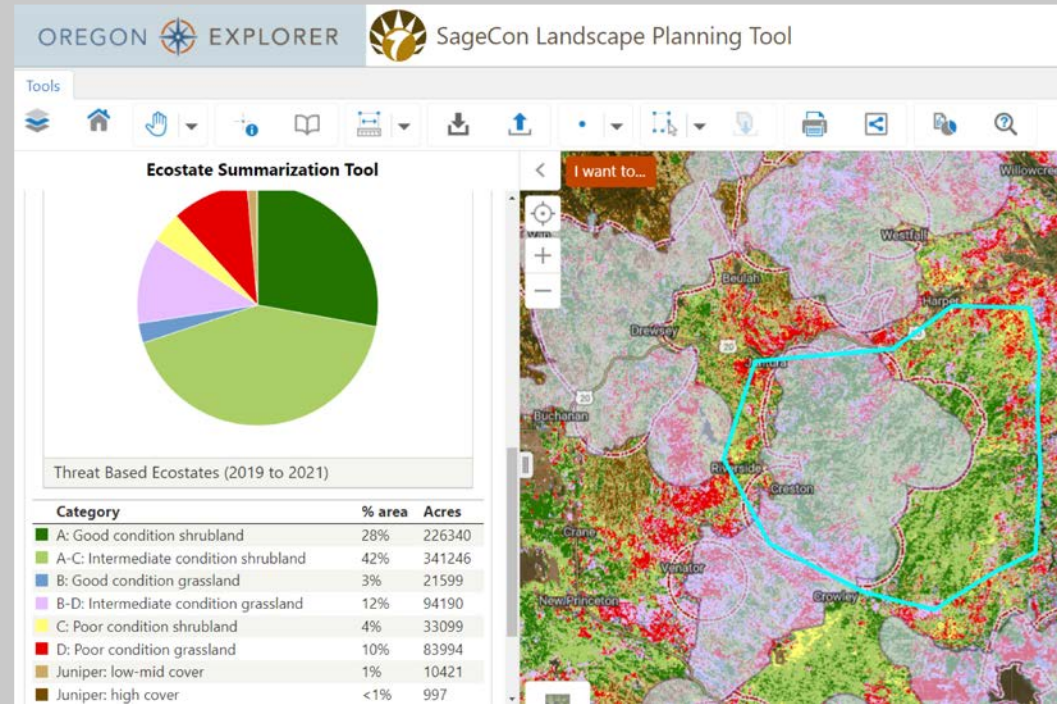
Doing More, Better!

- BIOLOGICAL/ECOLOGICAL DATA
- Sage-grouse PACs
- “Core” sagebrush habitat
- TECHNICAL RESOURCES
- Sagebrush Conservation Design
- SageCon’s Landscape Planning Tool
- **POLICY AND PROGRAMS**
- Partner priorities (CCAA, SGI, NEPA)
- What are funders looking for?



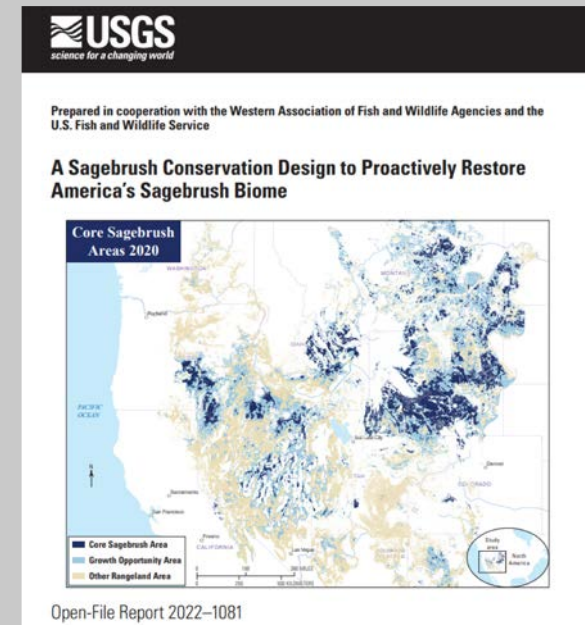
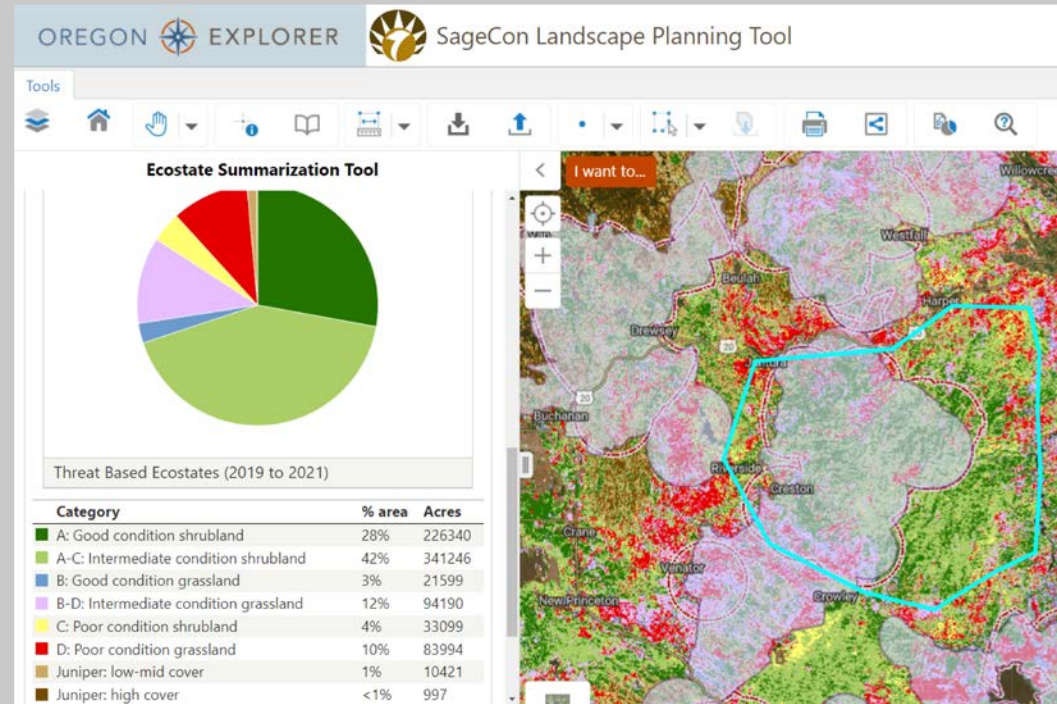
Doing More, Better!

- **BIOLOGICAL/ECOLOGICAL DATA**
- Sage-grouse PACs
- “Core” sagebrush habitat
- **TECHNICAL RESOURCES**
- Sagebrush Conservation Design
- SageCon’s Landscape Planning Tool
- **POLICY AND PROGRAMS**
- Partner priorities (CCAA, SGI, NEPA)
- What are funders looking for?
- **SOCIAL CONSIDERATIONS**
- How can we plan better to save time and money?
- Group implementation geographically and temporally to drive contracting and supply costs down.
- Where are the willing landowners?
- Who are the right partners and what are their roles?



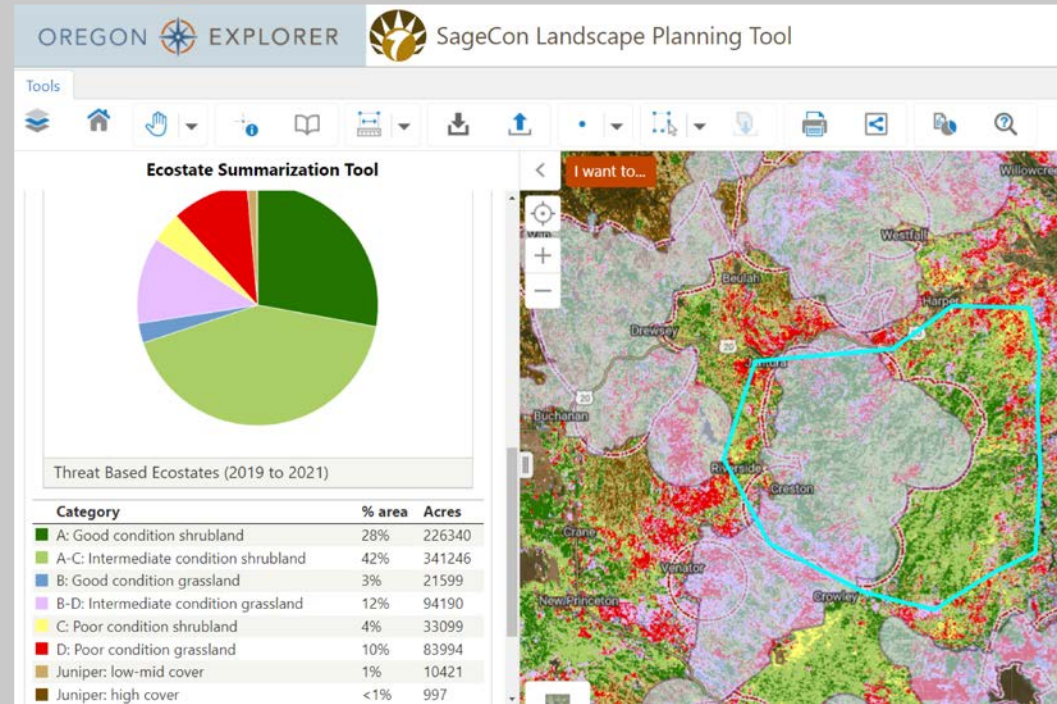
Doing More, Better!

- **BIOLOGICAL/ECOLOGICAL DATA**
- Sage-grouse PACs
- “Core” sagebrush habitat
- **TECHNICAL RESOURCES**
- Sagebrush Conservation Design
- SageCon’s Landscape Planning Tool
- **POLICY AND PROGRAMS**
- Partner priorities (CCAA, SGI, NEPA)
- What are funders looking for?
- **SOCIAL CONSIDERATIONS**
- How can we plan better to save time and money?
- Group implementation geographically and temporally to drive contracting and supply costs down.
- Where are the willing landowners?
- Who are the right partners and what are their roles?
- **MONITORING AND ADAPTIVE MANAGEMENT**
- Did our treatments work?



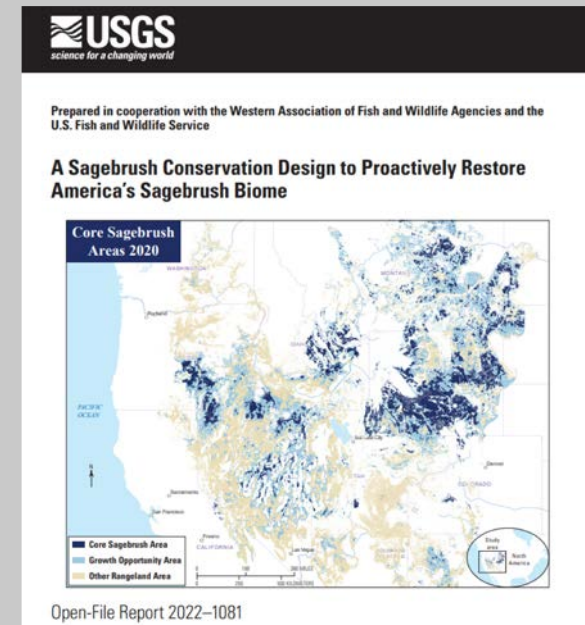
Doing More, Better!

- **BIOLOGICAL/ECOLOGICAL DATA**
- Sage-grouse PACs
- “Core” sagebrush habitat
- **TECHNICAL RESOURCES**
- Sagebrush Conservation Design
- SageCon’s Landscape Planning Tool
- **POLICY AND PROGRAMS**
- Partner priorities (CCAA, SGI, NEPA)
- What are funders looking for?
- **SOCIAL CONSIDERATIONS**
- How can we plan better to save time and money?
- Group implementation geographically and temporally to drive contracting and supply costs down.
- Where are the willing landowners?
- Who are the right partners and what are their roles?
- **MONITORING AND ADAPTIVE MANAGEMENT**
- Did our treatments work?



Finding the right process to put these pieces together,

- Where are we?
- Where do we want to be?
- How do we get there?





Thank You, Partners!

- **Amanda Zander**, Malheur County Weed Department
- **Ken Diebel**, Malheur Watershed Council
- **Gary Faw, Linda Rowe, and Bret Cleaver**, Malheur County Soil and Water Conservation District
- **Shanda Zettle and Gavin Carman**, Tri-County Cooperative Weed Management Area
- **Randy Wiest**, Department of State Lands
- **Private Landowners**
- **Morgan Solomon and Dallas Hall Defrees**, Baker Sage-grouse Local Implementation Team
- **Jackie Cupples, Jeff Everett, and CalLee Davenport**, US Fish and Wildlife Service
- **Matt Holland, Sarah Marquart, and Shelby Yoder**, Pheasants Forever
- **Members of the Harney County Wildfire Collaborative**