

RESOURCE MANAGEMENT ON SHELDON-HART MOUNTAIN NATIONAL WILDLIFE REFUGE COMPLEX



SageCon Summit

2023

Kim Haab, *Wildlife Biologist*

Kevin Goldie, *Habitat Biologist*



SHELDON-HART MOUNTAIN NWR COMPLEX

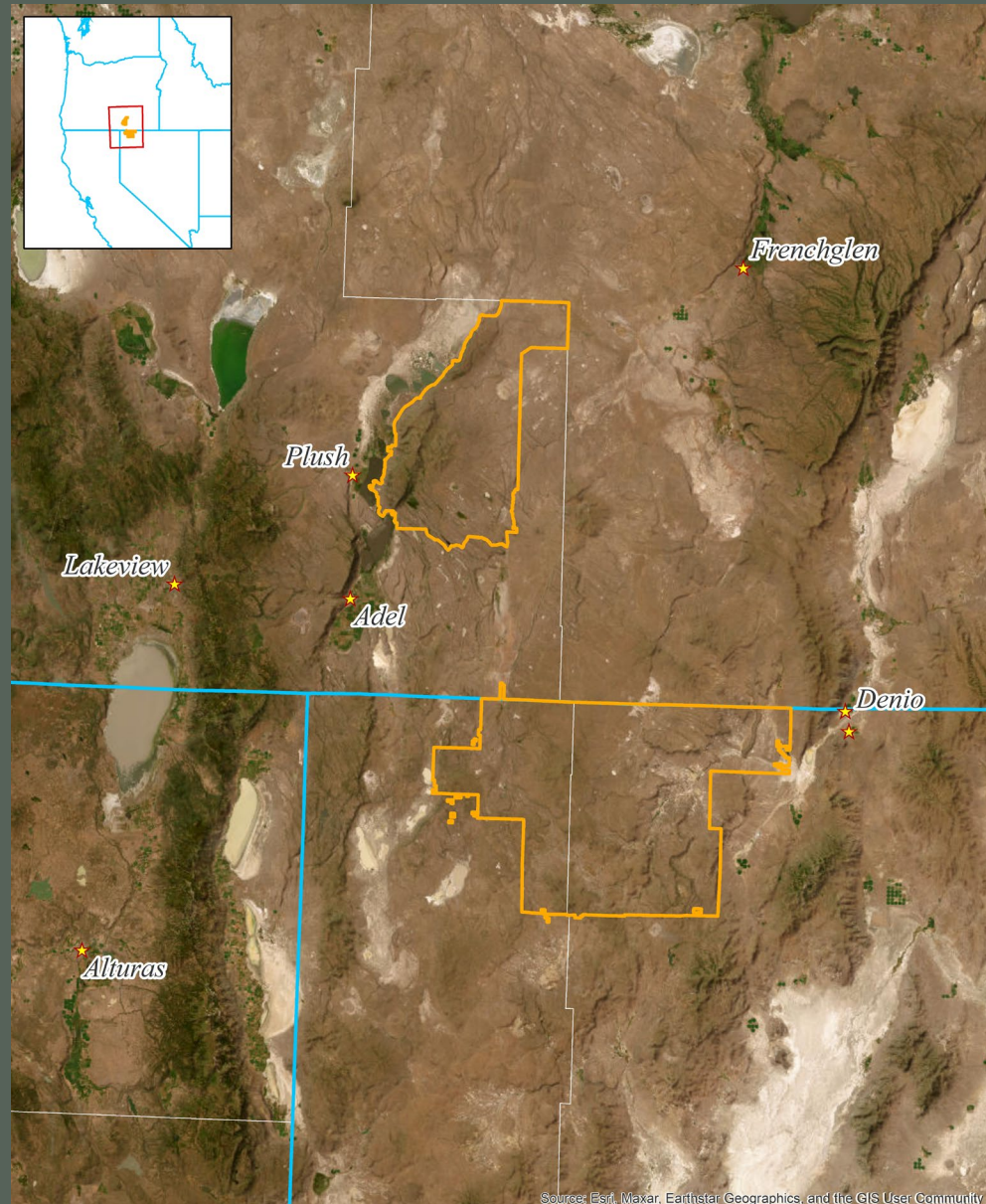
Hart Mountain *National Antelope Refuge*

- Approx. 277,954 acres



Sheldon *National Wildlife Refuge*

- Approx. 576,506 acres



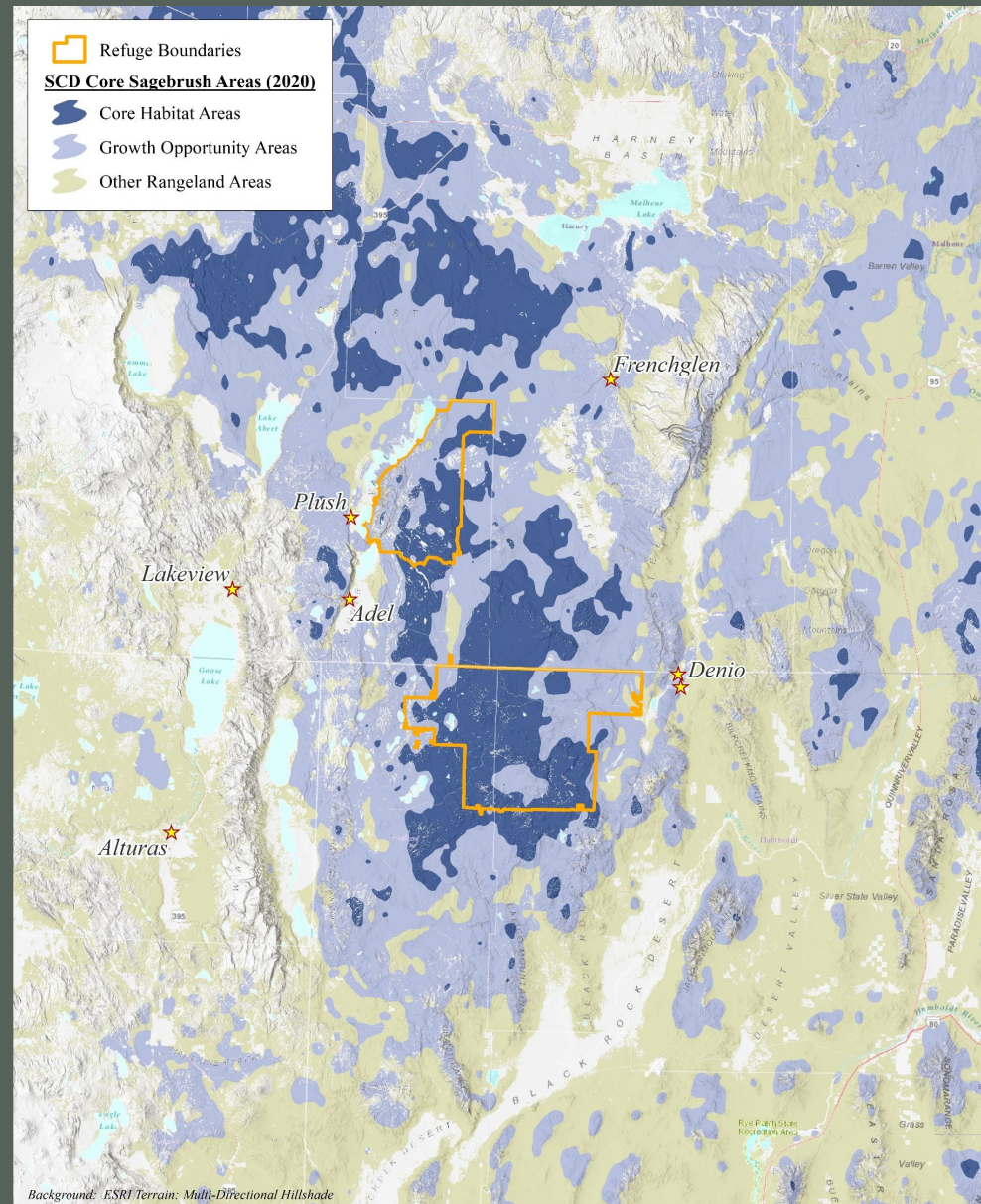
SAGEBRUSH CONSERVATION DESIGN (2020)

Hart Mountain National Antelope Refuge:

- Core Habitat Areas: 121,849 acres (43.5%)
- Growth Opportunity Areas: 119,939 acres (42.8%)
- Other Rangeland Areas: 3,430 acres (1.2%)
- Non-Sagebrush Areas: 35,026 acres (12.5%)
 - *primarily woodlands, rock features, playas & mesic/wetland areas*

Sheldon National Wildlife Refuge:

- Core Habitat Areas: 353,478 acres (61.2%)
- Growth Opportunity Areas: 193,084 acres (33.5%)
- Other Rangeland Areas: 8,836 acres (1.5%)
- Non-Sagebrush Areas: 22,086 acres (3.8%)
 - *primarily rock features, playas & mesic/wetland areas, and road surfaces & opal mine areas*



BIO PROJECTS

- GRSG lek counts
- Big game surveys
- Pygmy rabbit surveys
- Bat monitoring
- Wildlife cameras (guzzlers, meadows)
- Invasives management
- Meadow and spring assessments
- Bighorn sheep habitat assessments
- Juniper management
- Fire rehabilitation
- Habitat monitoring



Habitat Monitoring



FY23 Field Crew



BHS Habitat Assessments



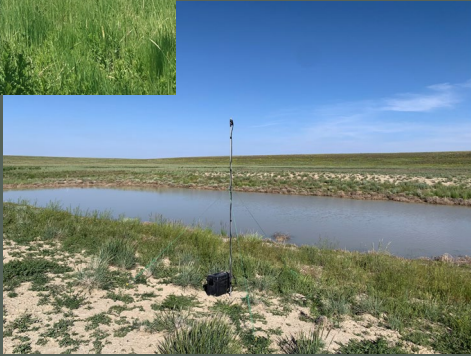
Bat Monitoring



Pygmy Rabbit Surveys



Spring Assessments



Big Game Surveys



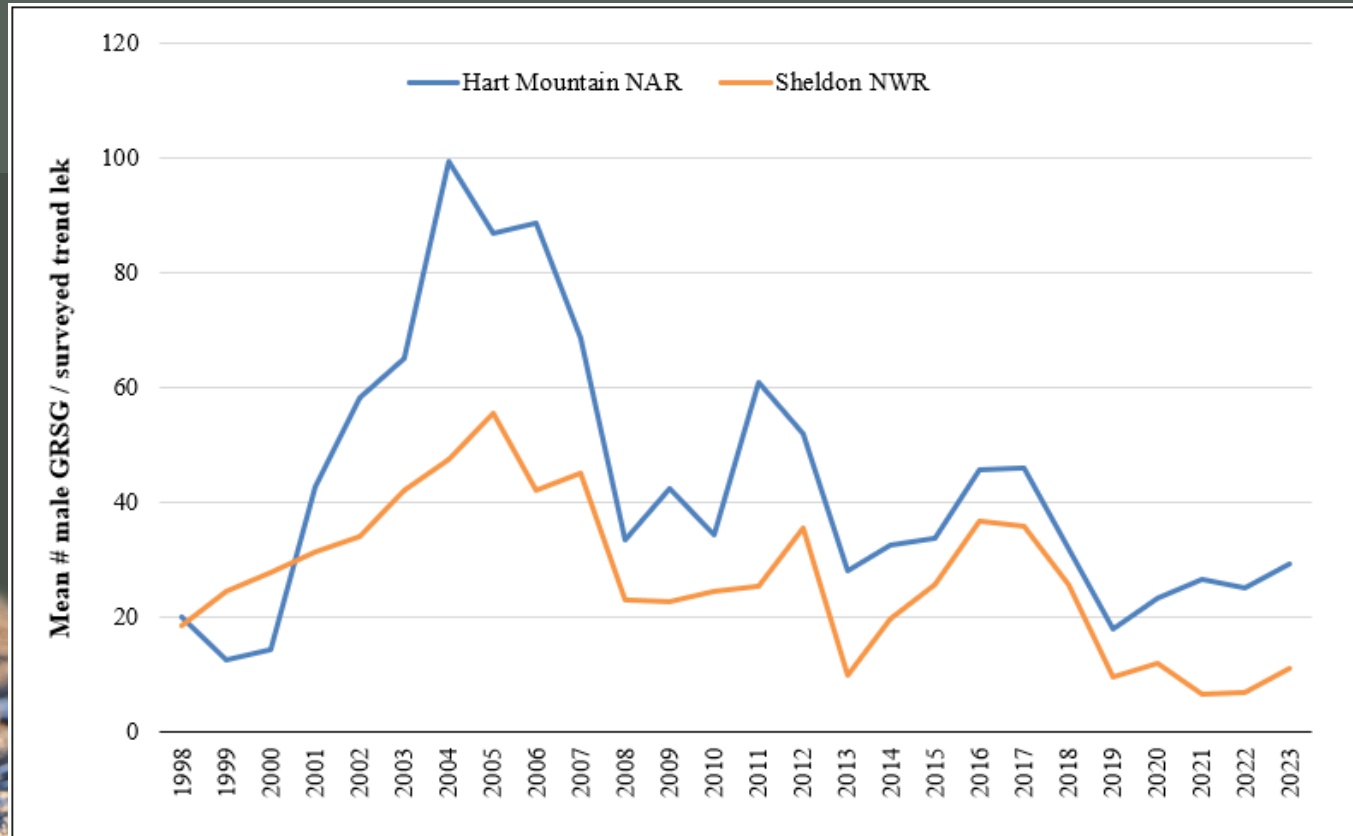
GRSG Lek Counts

Wildlife Cameras



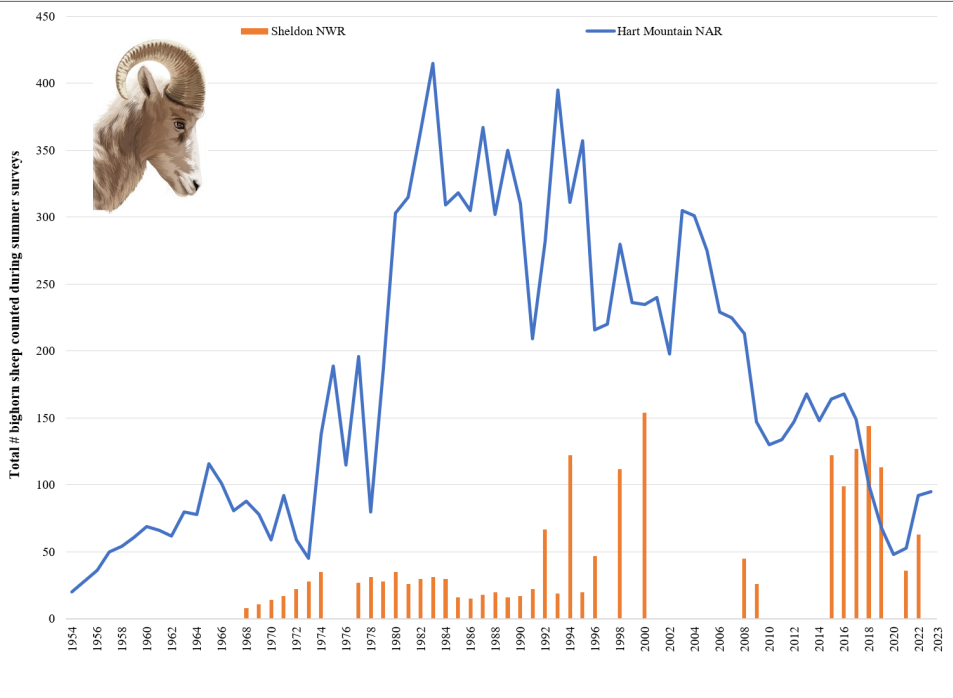
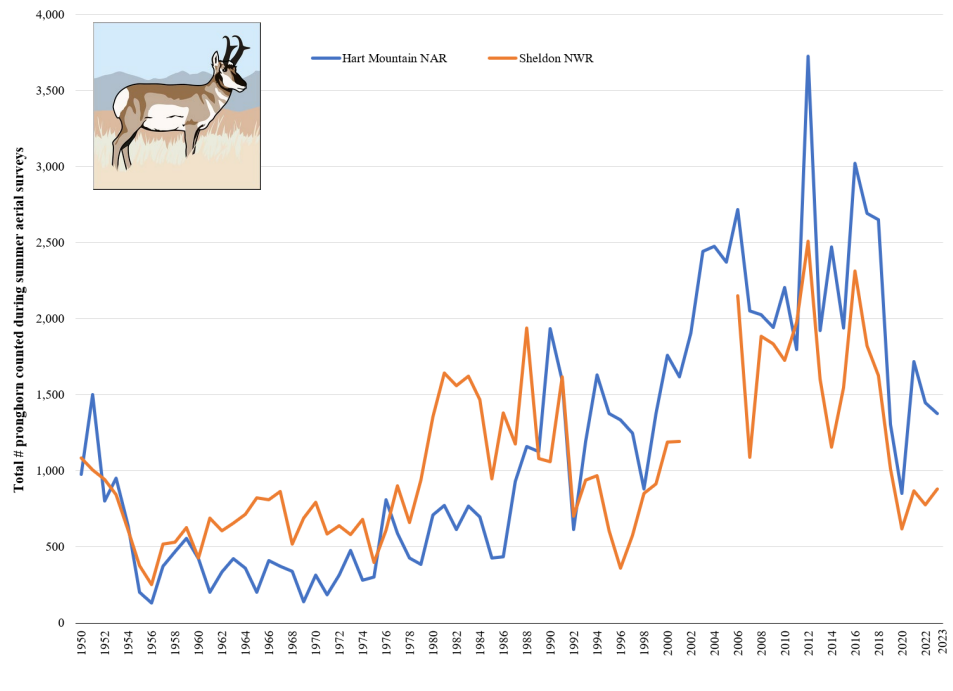
GREATER SAGE-GROUSE

Hart NAR Comprehensive Aerial Survey



© Jennifer Hall

BIG GAME



Hart Mountain

National Antelope Refuge

Encroaching Juniper Removal:

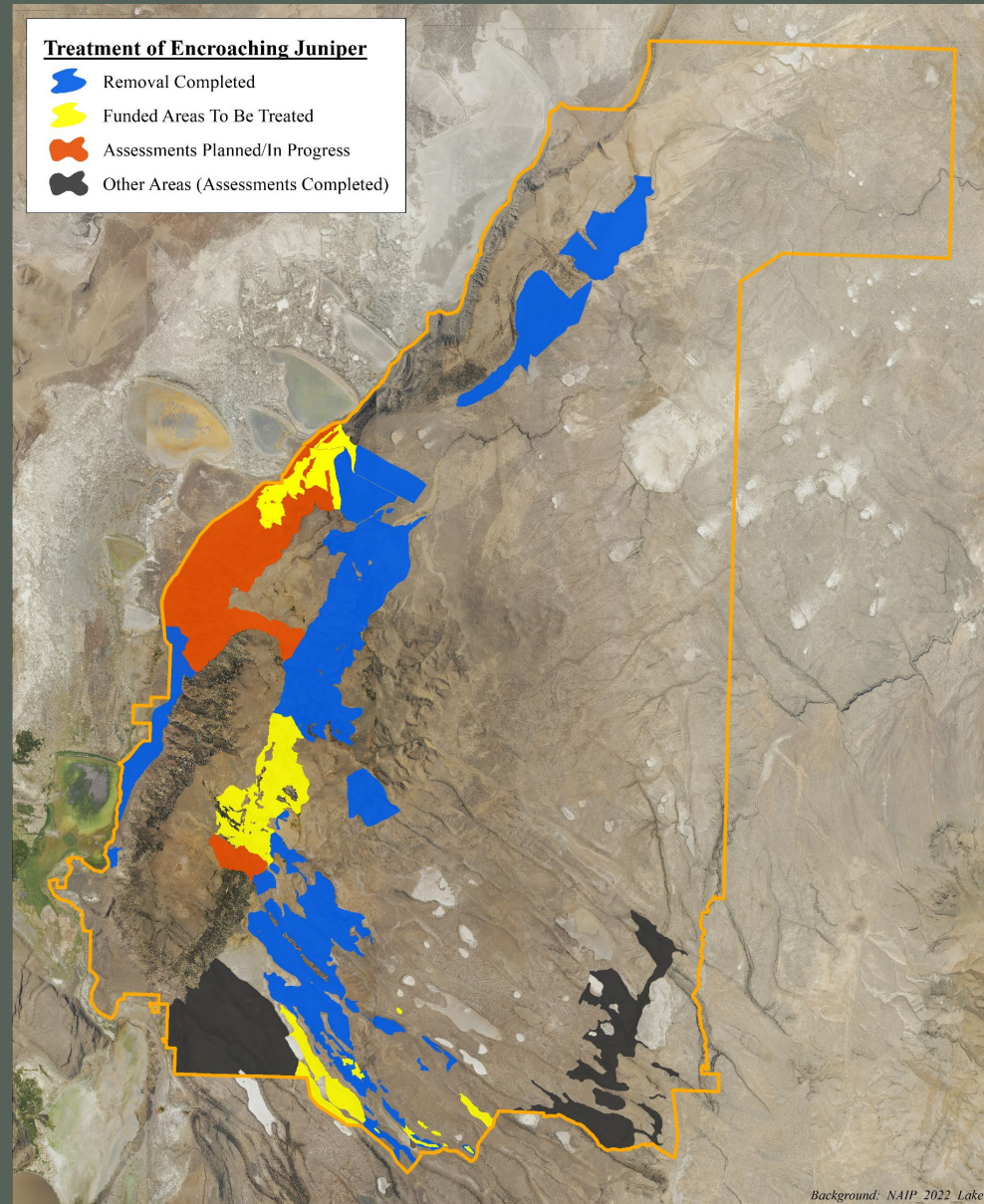
(since 2012)

Total: 24,656 acres

- Hand Sever (Drop & Walk): 13,614 acres
 - *2,409 acres were later piled for burning*
- Lop & Scatter: 2,700 acres
- Cut/Pile/Cover: 4,674 acres
- L&S + C/P/C (mixed treatment): 2,658 acres
- D&W + L&S (mixed treatment): 1,010 acres

Planned Efforts: *(next 2-3 years)*

- Additional Removal: 6,611 acres (funded)
- Evaluations (of Completed Asmts): 10,544 acres
- Additional Hab. Cond. Assessments: 10,390 acres
 - *focused on Bighorn Sheep habitats*



Hart Mountain

National Antelope Refuge

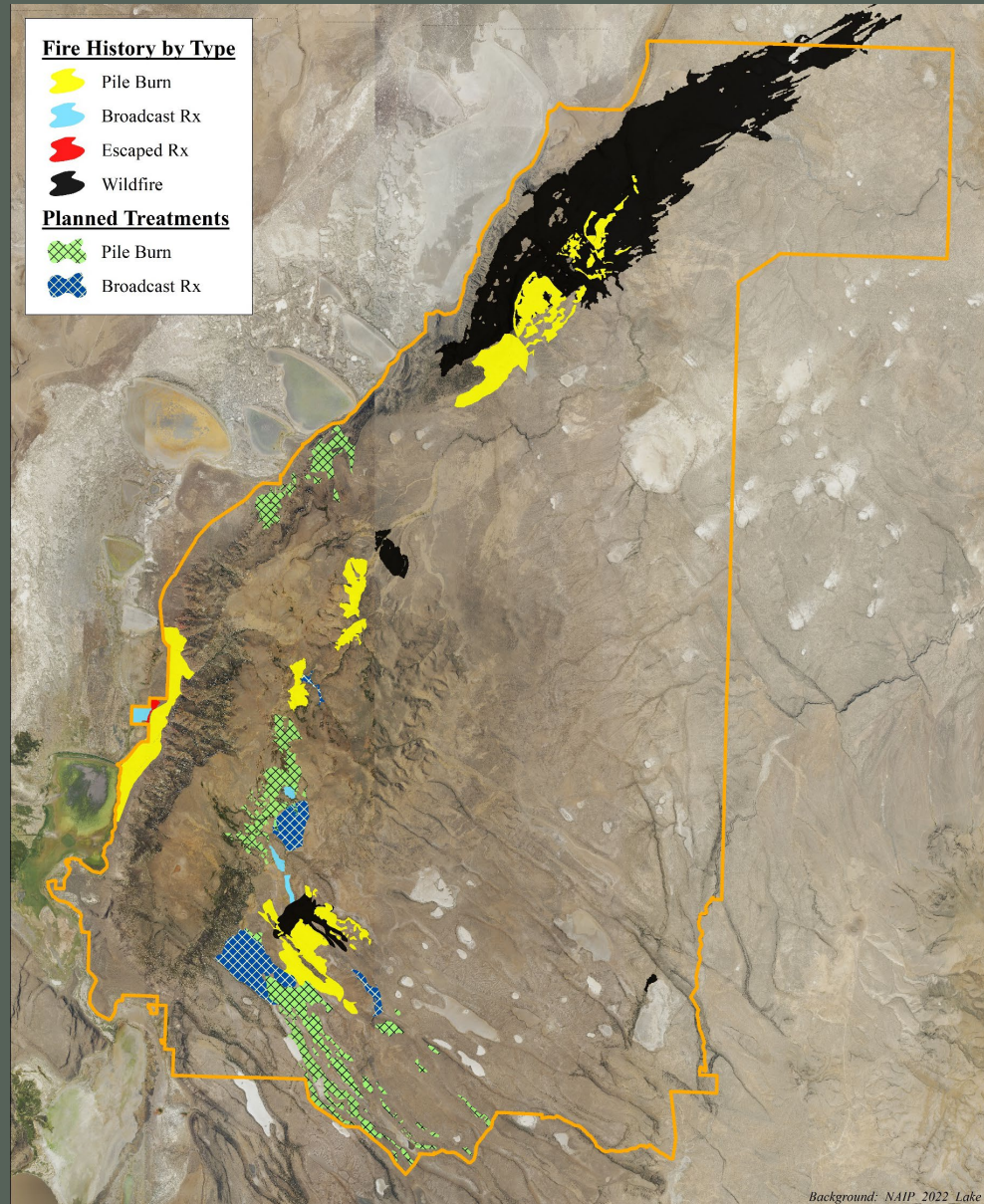
Fire History: *(since 2012)*

Total: 29,457 acres *(28,696 acres on-Refuge)*

- Pile Burn: within 7,704 acres
- Broadcast Rx: 361 acres
- Escaped Rx: 57 acres
- Wildfire: 21,334 acres *(20,573 acres on-Refuge)*

Planned Treatments: *(next 2-3 years)*

- Pile Burn: within ~5,296 acres
- Broadcast Rx: ~2,221 acres (meadows)
- Escaped Rx: 0 acres
- Wildfire: 0 acres (Hopefully. Probably not going to be that lucky.)



Hart Mountain

National Antelope Refuge

Aerial Herbicide Application:

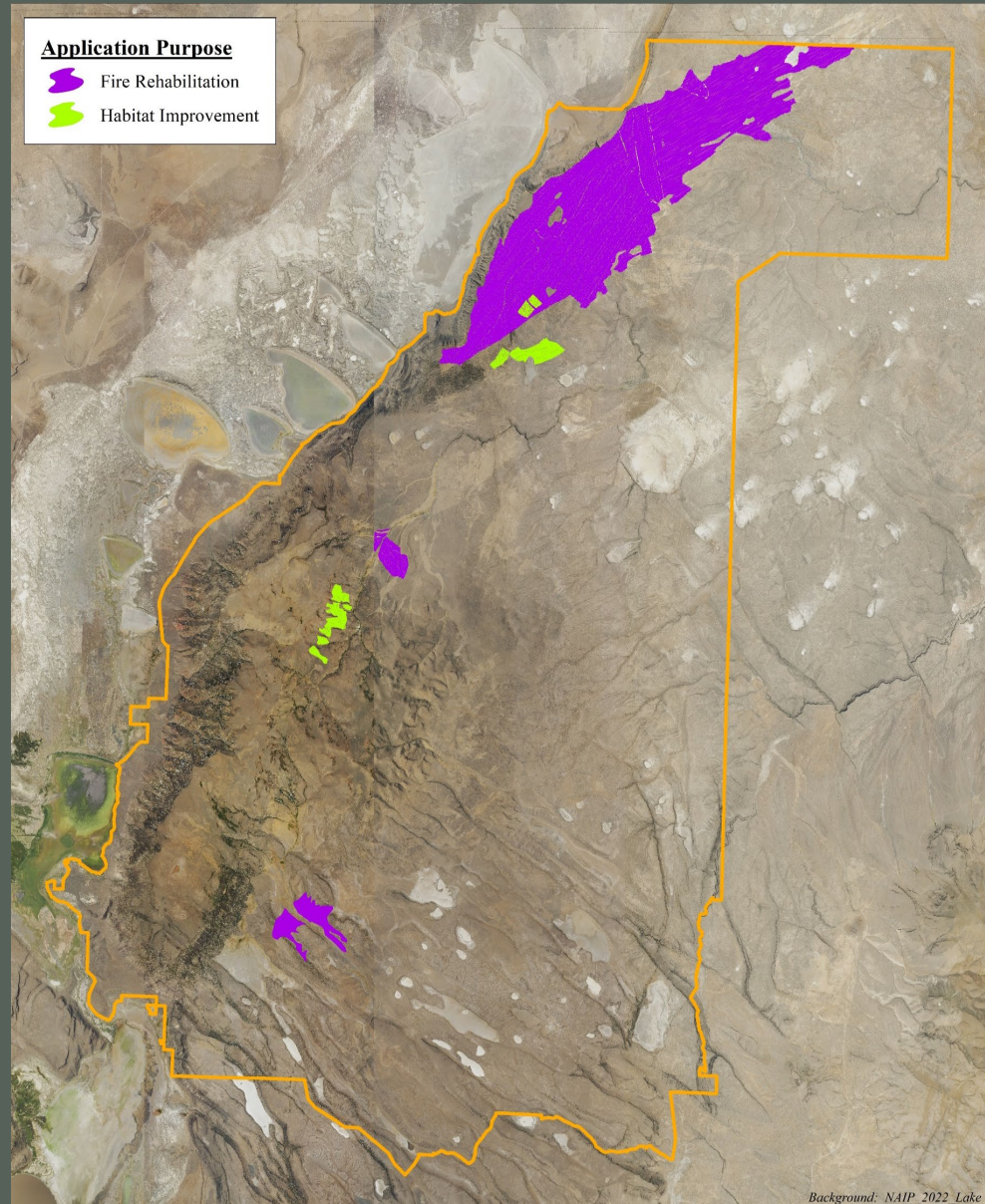
(since 2012)

Total: 20,343 acres

- Emergency Stabilization/Rehabilitation: 19,255 acres
- Habitat Improvement: 1,088 acres

Primary Targets: Invasive Annual Grasses
(*cheatgrass, Japanese brome, Field brome, Ventenata, medusahead*)

Currently no additional aerial applications planned on Hart Mountain for the next 2-3 years



Hart Mountain

National Antelope Refuge

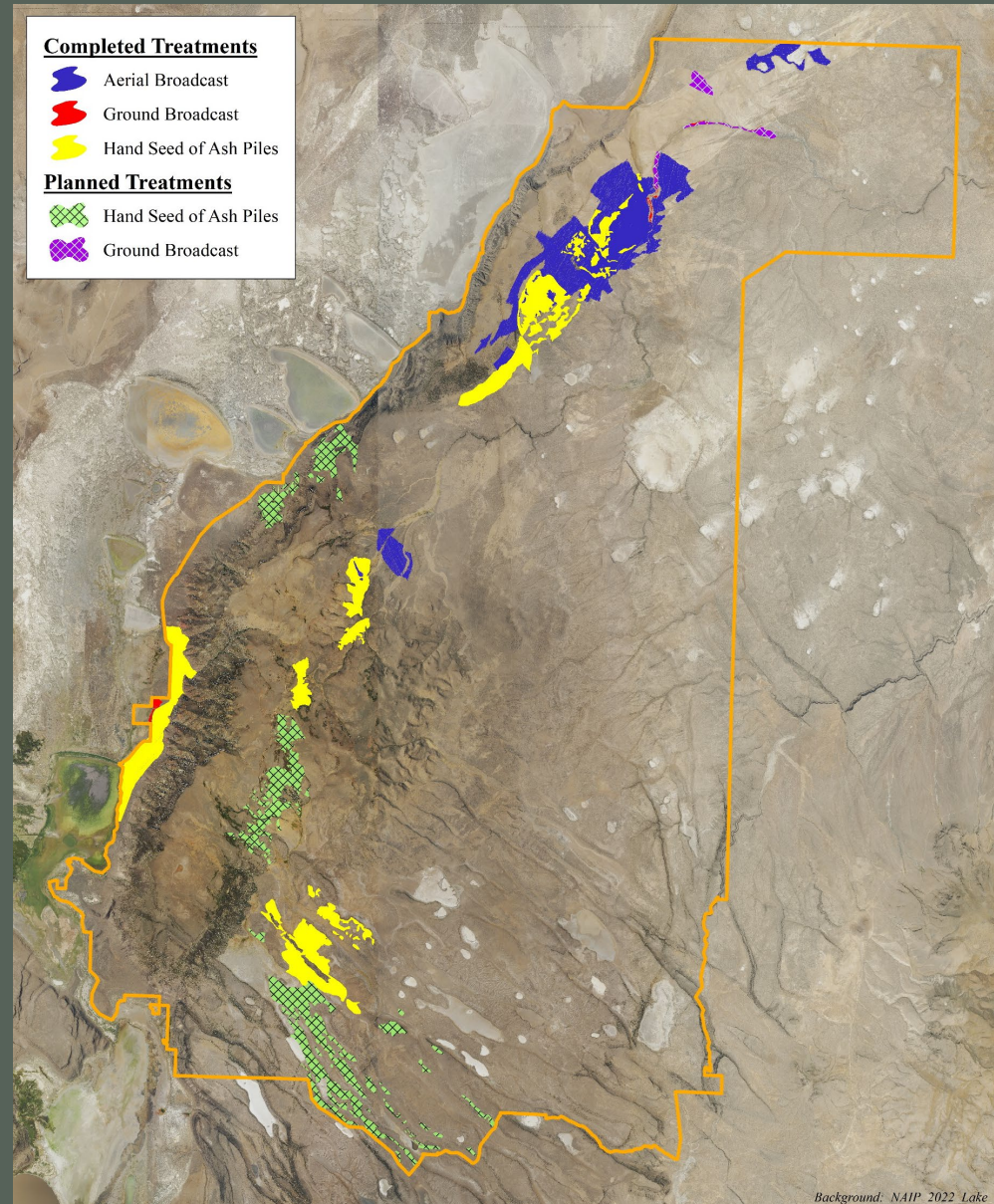
Native Seed Application: *(since 2012)*

Total: 16,554 acres

- Aerial Broadcast: 9,438 acres
- Ground Broadcast: 118 acres
- Hand Seed (of ash piles): within 6,998 acres

Planned Applications: *(next 2-3 years)*

- Ground Broadcast: ~250 acres
- Hand Seed: within ~5,300 acres



Hart Mountain

*National Antelope
Refuge*

Juniper Management



Hart Mountain

*National Antelope
Refuge*

Fire Rehabilitation

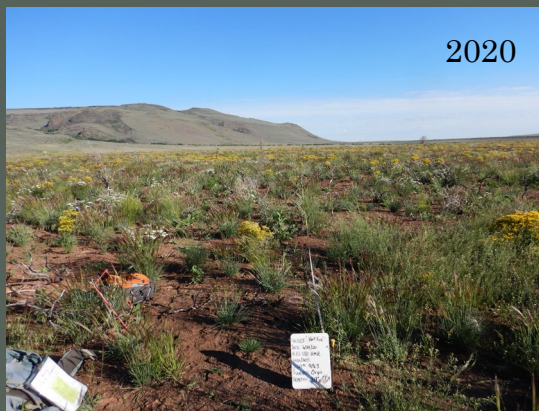


Hart Mountain

*National Antelope
Refuge*

Habitat Monitoring

➤ *Fire Rehab Effectiveness and Efficacy*



Hart Mountain

*National Antelope
Refuge*

Habitat Monitoring

➤ *Photographic Step-in-Time*





THANK YOU



Kim Haab, kimberly_haab@fws.gov

Kevin Goldie, kevin_goldie@fws.gov

