

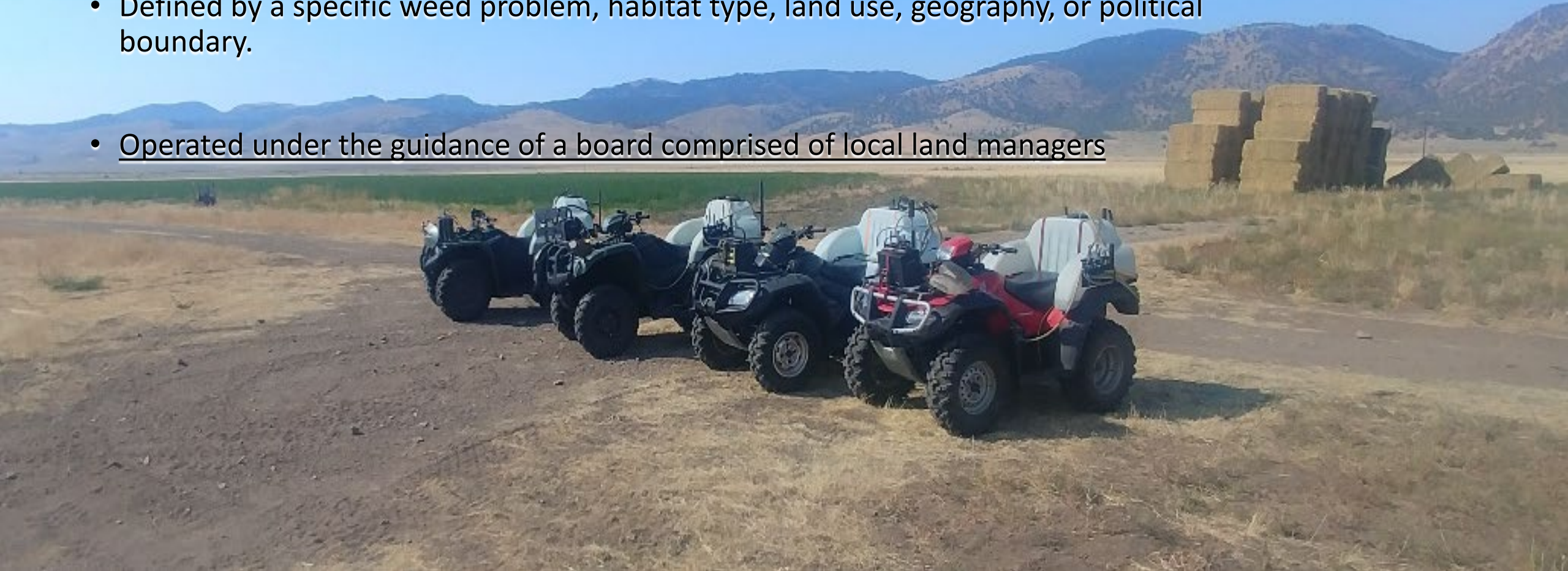


Lake County Cooperative Weed Management Area

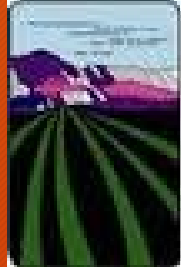


What is a CWMA?

- Partnership of federal, state, local government agencies, individuals, and interested groups that manage noxious weeds
- Where applicable, work jointly to accomplish common goals
- Defined by a specific weed problem, habitat type, land use, geography, or political boundary.
- Operated under the guidance of a board comprised of local land managers



Partners









[Blank wooden signpost]

Newtron

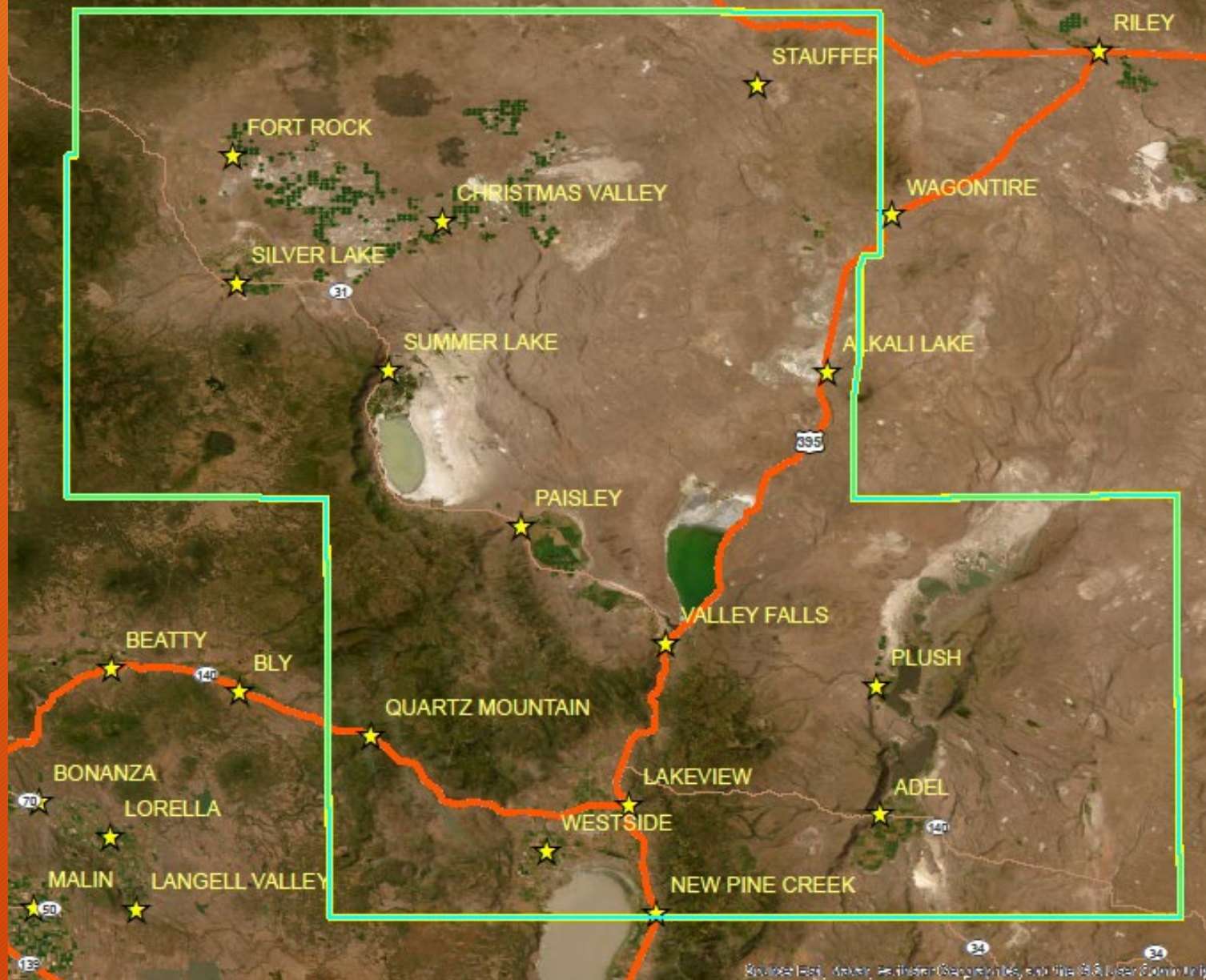
Chevron
Fuel
2.85
3.24
3.54
3.91

CHRISTMAS
VALLEY
LODGE
RESTAURANT





Sage Grouse Distribution in Lake County



Sage Grouse Distribution in Lake County



Sage Grouse Distribution in Lake County



Sage Grouse Distribution in Lake County



Sage Grouse Distribution in Lake County



Sage Grouse Distribution in Lake County



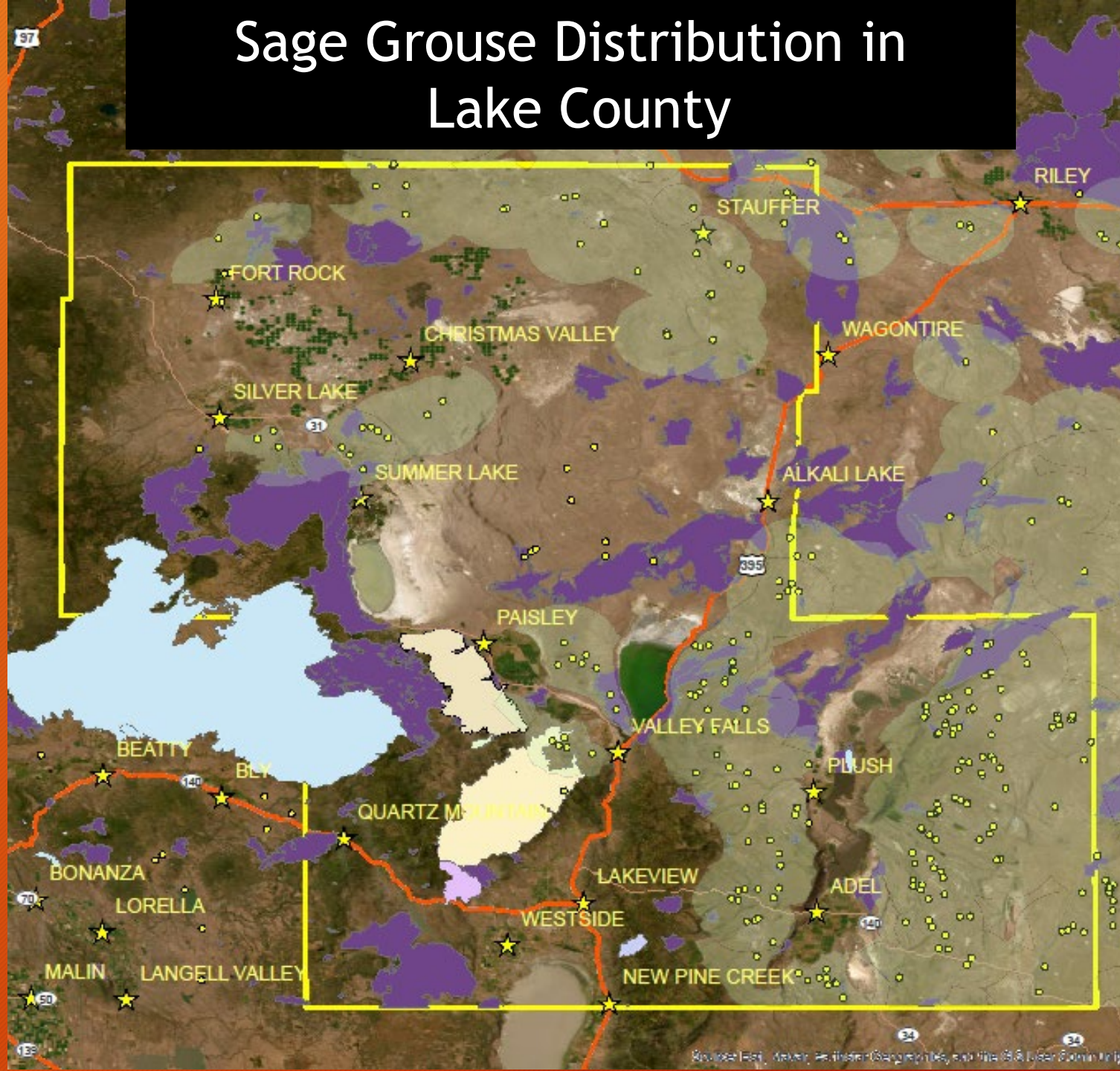
Sage Grouse Distribution in Lake County



Sage Grouse Distribution in Lake County



Sage Grouse Distribution in Lake County



To Participate in Noxious Weed Control Efforts in Lake County

- Contact CWMA
 - Jason Jaeger
 - lakecountyCWMA@gmail.com
 - (541) 219-0537



