



# SageCon partners respond: What are the barriers to invasive annual grass management?

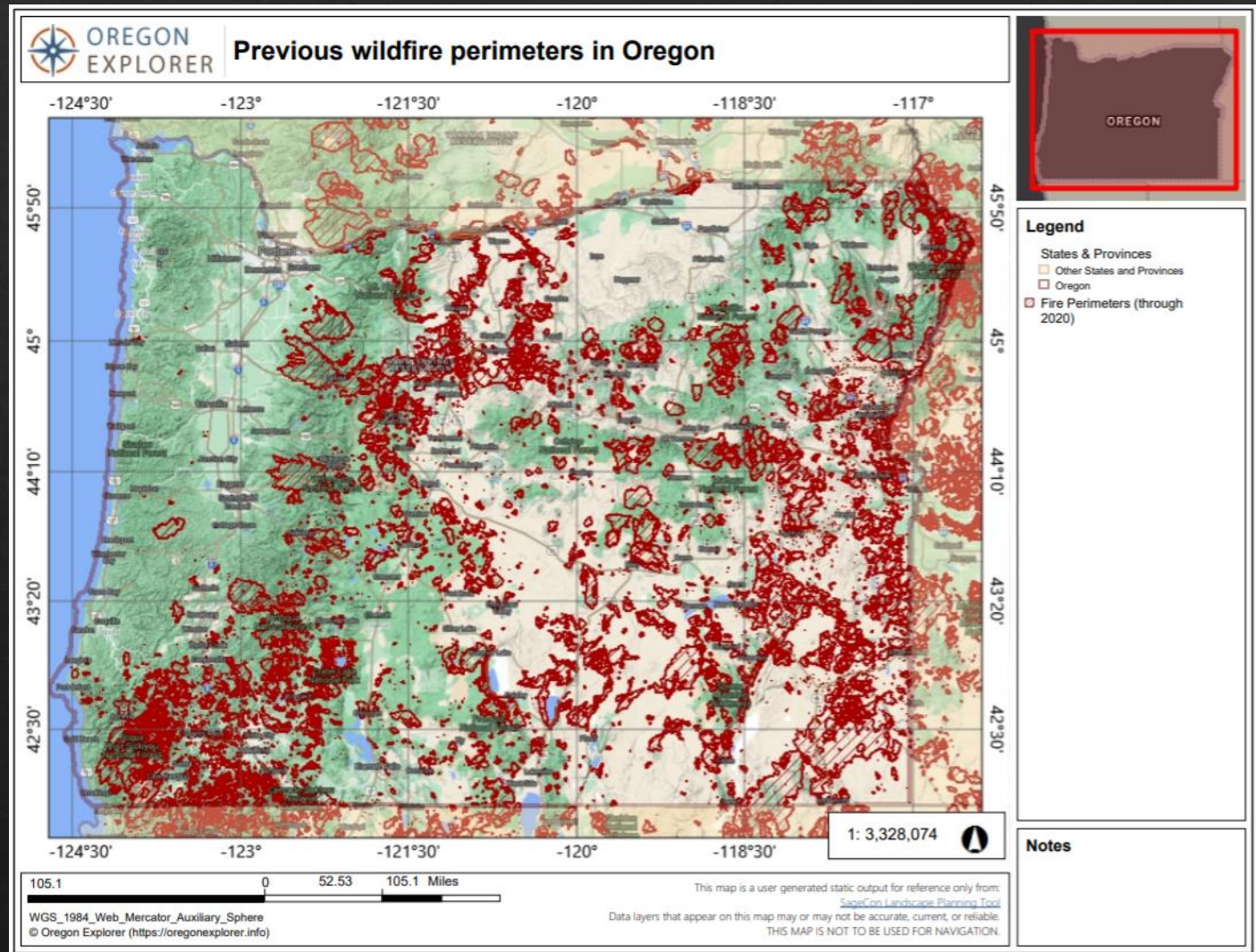
Megan Creutzburg, Institute for Natural Resources

[Megan.Creutzburg@oregonstate.edu](mailto:Megan.Creutzburg@oregonstate.edu)

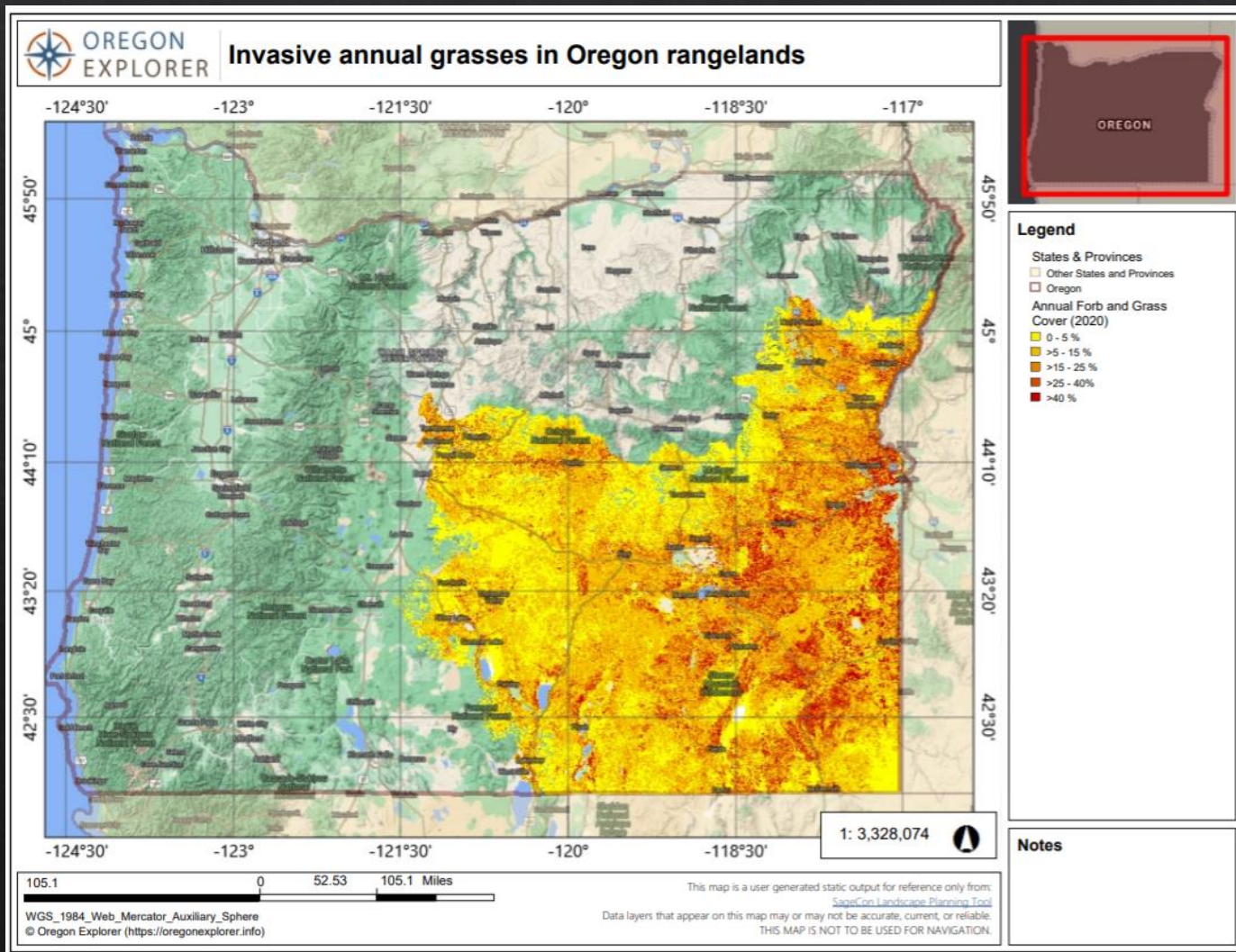
<https://sageconpartnership.com/>

# Fire & invasive annual grasses in southeastern Oregon

3 million acres burned in southeastern Oregon since 2003



# Fire & invasive annual grasses in southeastern Oregon



Over 5 million acres heavily impacted by invasive annual grasses

# We want to hear from you!

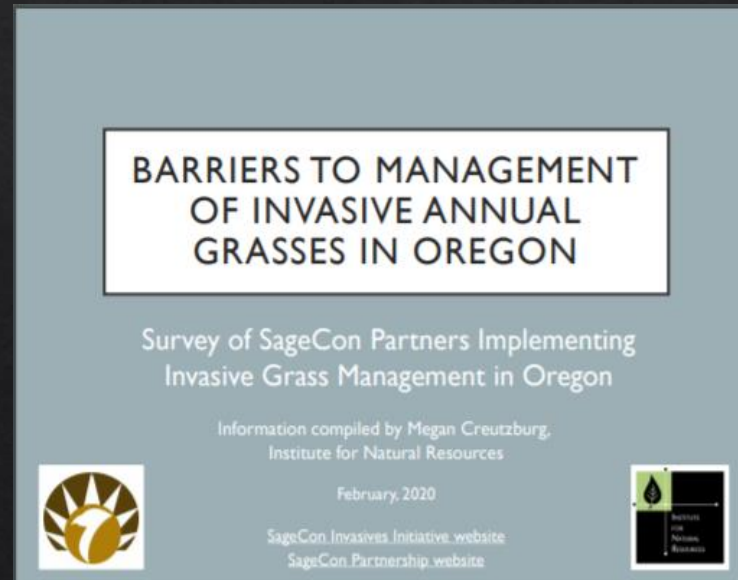
- ◆ I will talk for a few minutes about barriers
- ◆ Then we will switch from barriers to successes - and learn from your experiences
- ◆ Word cloud activity:
  - ▣ What are successful strategies to address invasive annual grasses across large landscapes?

# The SageCon Invasives Initiative

How do you begin to tackle a problem as big as invasive annual grasses in Oregon rangelands?

## Step 1. Listen!

Interviewed practitioners about barriers to invasive grass management



# Barriers to invasive grass management

## RANKING OF TOP BARRIERS

	Overall Ranking	Number in Top 3	Range*
1. <b>Financial</b> (need more money for implementation)	#1	14	1-7
2. <b>Policy</b> (policy or bureaucratic barriers to more effective management)	#2	10	1-7
3. <b>Technological</b> (availability of effective techniques & technologies)	#3	8	1-6
4. <b>Coordination</b> (creating and maintaining relationships, engaging partners in a coordinated way, crossing jurisdictional boundaries)	#4	9	1-7
5. <b>Logistical</b> (logistics of doing the right things at the right time and place)	#5	6	1-7
6. <b>Information</b> (basic knowledge, best practices, decision support frameworks, etc)	#6	7	1-7
7. <b>Capacity</b> (need more staff or contractors)	#7	6	2-7

\* Rankings for almost all topics ranged from largest/most important barrier (ranked #1) to smallest barrier (ranked #7) across participants, except technological (never rated as the smallest barrier) and capacity (never rated as the largest barrier)

# Address barriers locally

- ◇ Ranking of barriers varied widely
- ◇ All 7 factors are limiting and are **variable** geographically and across partner perspectives



- ◇ Develop **locally-led solutions** to addressing barriers, **building on existing capacity**



# Invest in long-term management

- ◆ **Funding** is most limiting but will not solve the problem alone
- ◆ Reliable funding for **long-term management** is needed
  - Invest in predictable funding streams
  - Ensure we are not looking for one-and-done solutions





# Flexibility is key

- ◆ **Policy** was ranked as a significant barrier
- ◆ **Grazing flexibility** was the most mentioned barrier in the interviews
  - ▣ Where do livestock go during/after restoration activities (or fire)? How can livestock be managed to reduce invasives?
  - ▣ Upcoming producer listening sessions happening soon!



# Moving from barriers to opportunities

Back to you:

- ◆ What are successful strategies to address invasive annual grasses across large landscapes?
- ◆ Enter as many words or short phrases as come to mind

Full interview results at:

<https://oe.oregonexplorer.info/externalcontent/sagecon/SageCon%20invasive%20management%20interview%20results.pdf>