

What Have We Learned & Where Do We Go From Here?

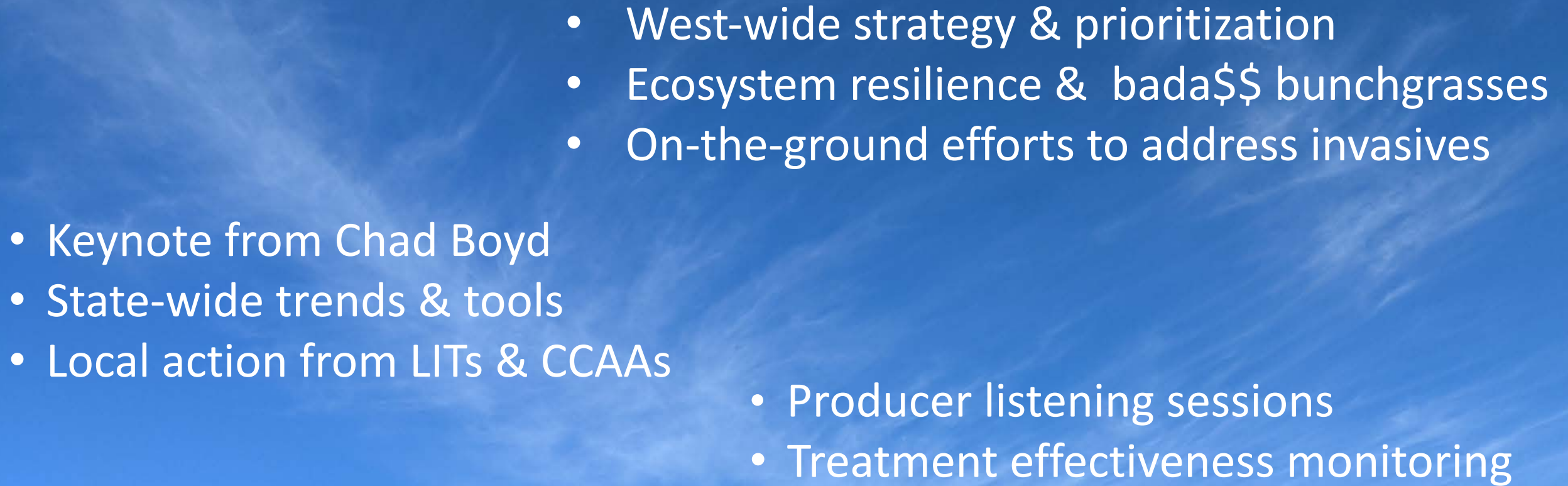


- Keynote from Chad Boyd
- State-wide trends & tools
- Local action from LITs & CCAAs



- 
- Keynote from Chad Boyd
 - State-wide trends & tools
 - Local action from LITs & CCAAs

- Producer listening sessions
- Treatment effectiveness monitoring


- 
- West-wide strategy & prioritization
 - Ecosystem resilience & bada\$\$ bunchgrasses
 - On-the-ground efforts to address invasives
- Keynote from Chad Boyd
 - State-wide trends & tools
 - Local action from LITs & CCAAs
 - Producer listening sessions
 - Treatment effectiveness monitoring

- Partnership
- Success
- Collaboration
- Science
- Strategy





On average, we're losing 1.3 million acres of intact sagebrush-steppe each year across the West

A group of five people, dressed in winter clothing, are standing in a snowy, open field. They appear to be in conversation. The scene is dimly lit, suggesting a low sun or overcast sky. The ground is covered in snow with some sparse vegetation. The overall mood is contemplative and collaborative.

In what ways might today's
information & ideas prompt you to
re-think or adjust your approach?

In what ways might you consider shifting your approach?





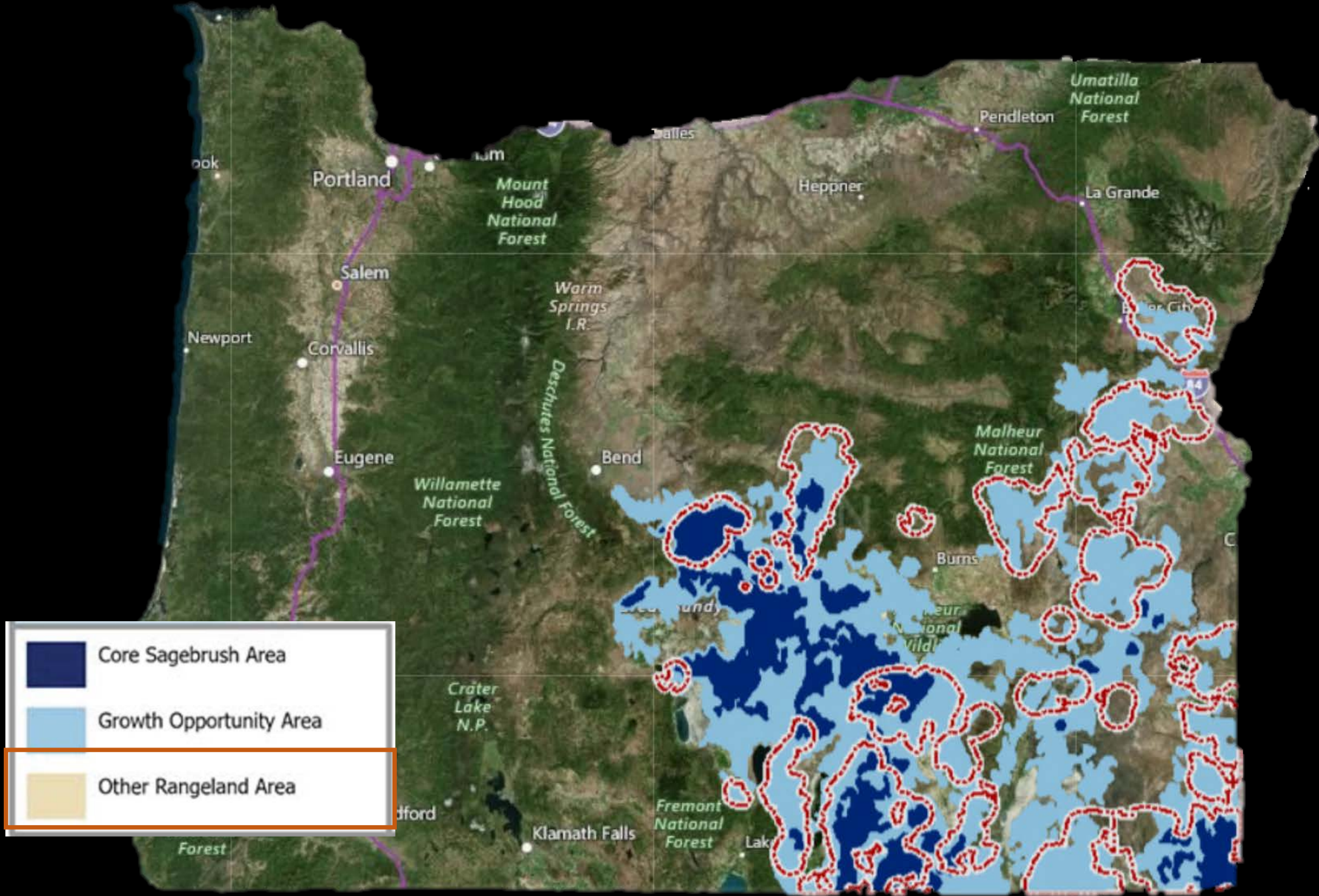
How to save the Sagebrush Sea?



How to **stabilize** the Sagebrush Sea?

A white speedboat with a blue stripe is parked on a blue trailer in a dry, scrubby landscape. The boat is positioned in the middle ground, slightly to the left. The terrain is covered with low-lying, green and brown shrubs. In the background, there are rolling hills under a cloudy sky. A small, dark object, possibly a trailer or vehicle, is visible in the distance on the left.

Increase emphasis on
proactive and **pragmatic**
interventions



A photograph of a white and blue boat on a trailer in a vast, flat, sagebrush-covered landscape under a cloudy sky. The boat is the central focus, with a small trailer to its left and a dark object to its right. The terrain is covered in low-lying green and brown shrubs. In the distance, there are low hills and a horizon line.

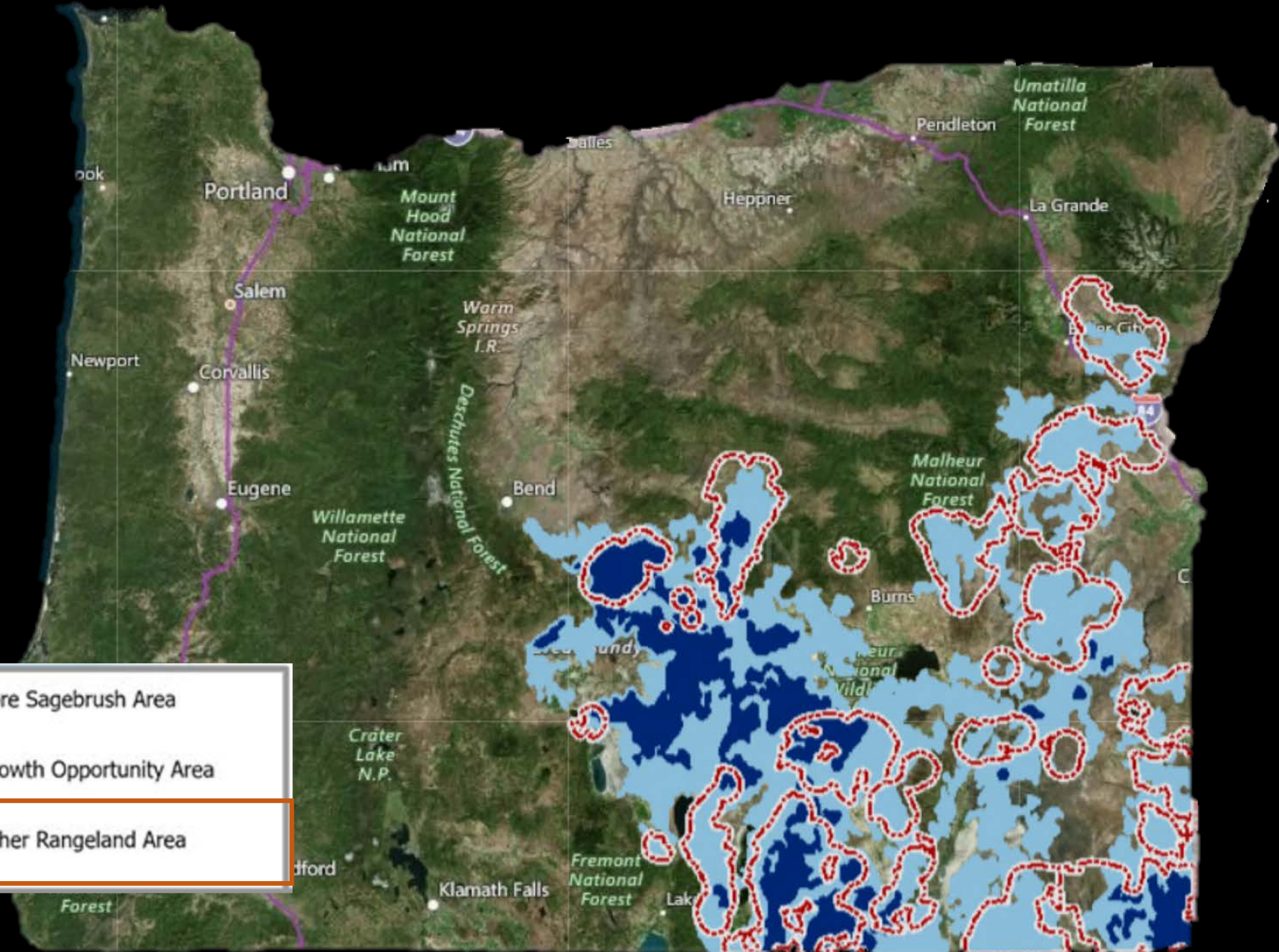
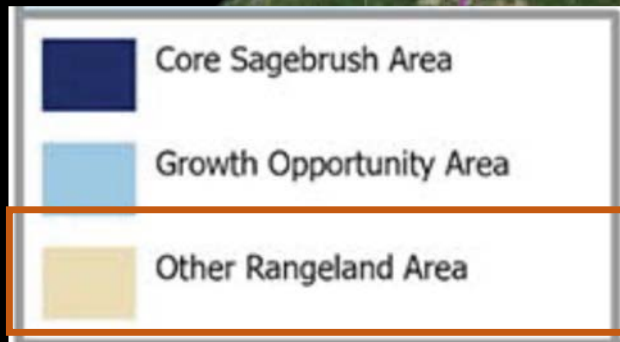
Keeping the Sagebrush Sea afloat:

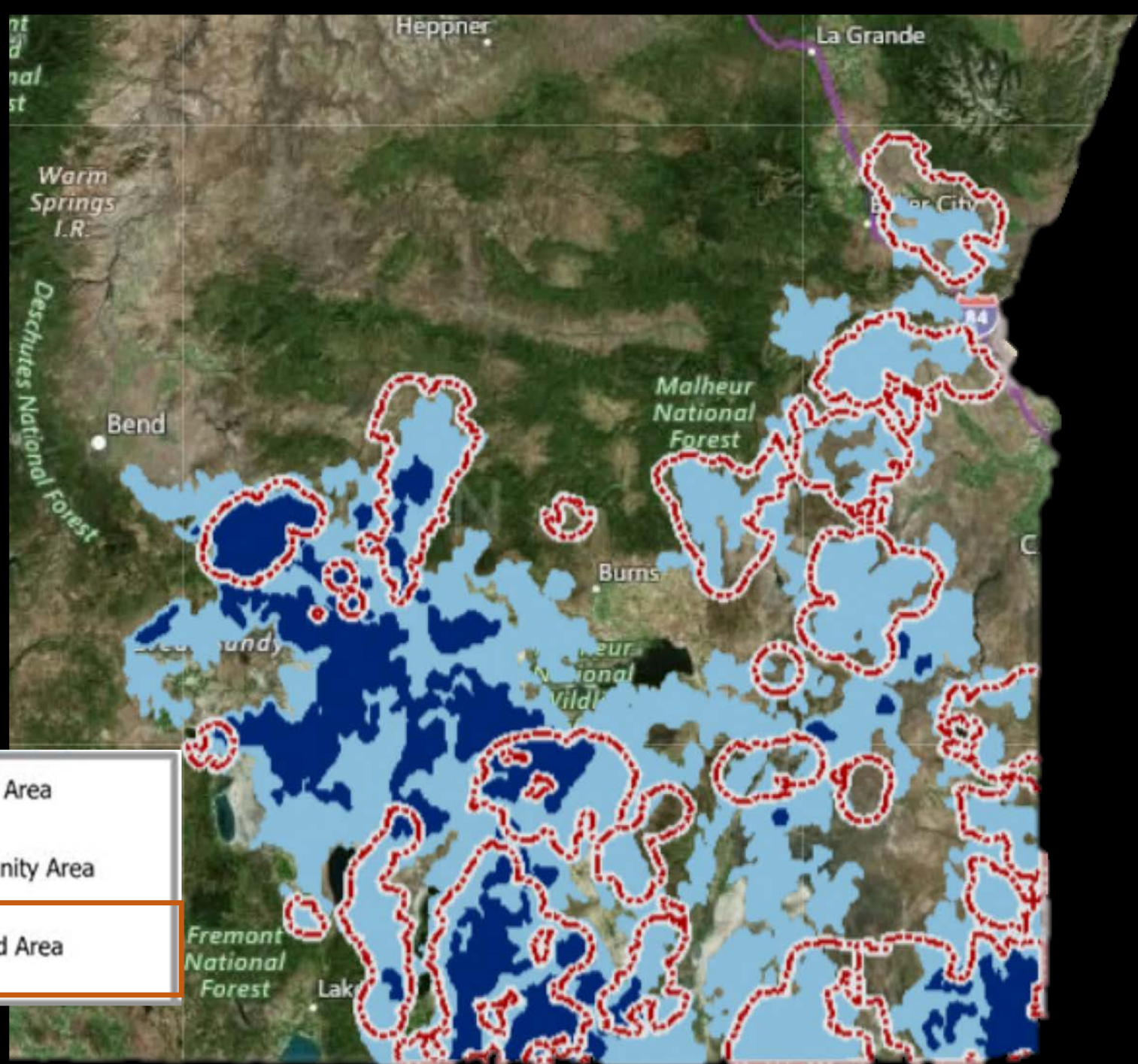
- Constant vigilance in **Core Areas**
- Fight tooth and nail in **Growth Areas**
- **Elsewhere** keep negative impacts at bay

What best describes your reaction to the "Defend and Grow the Core" framework?



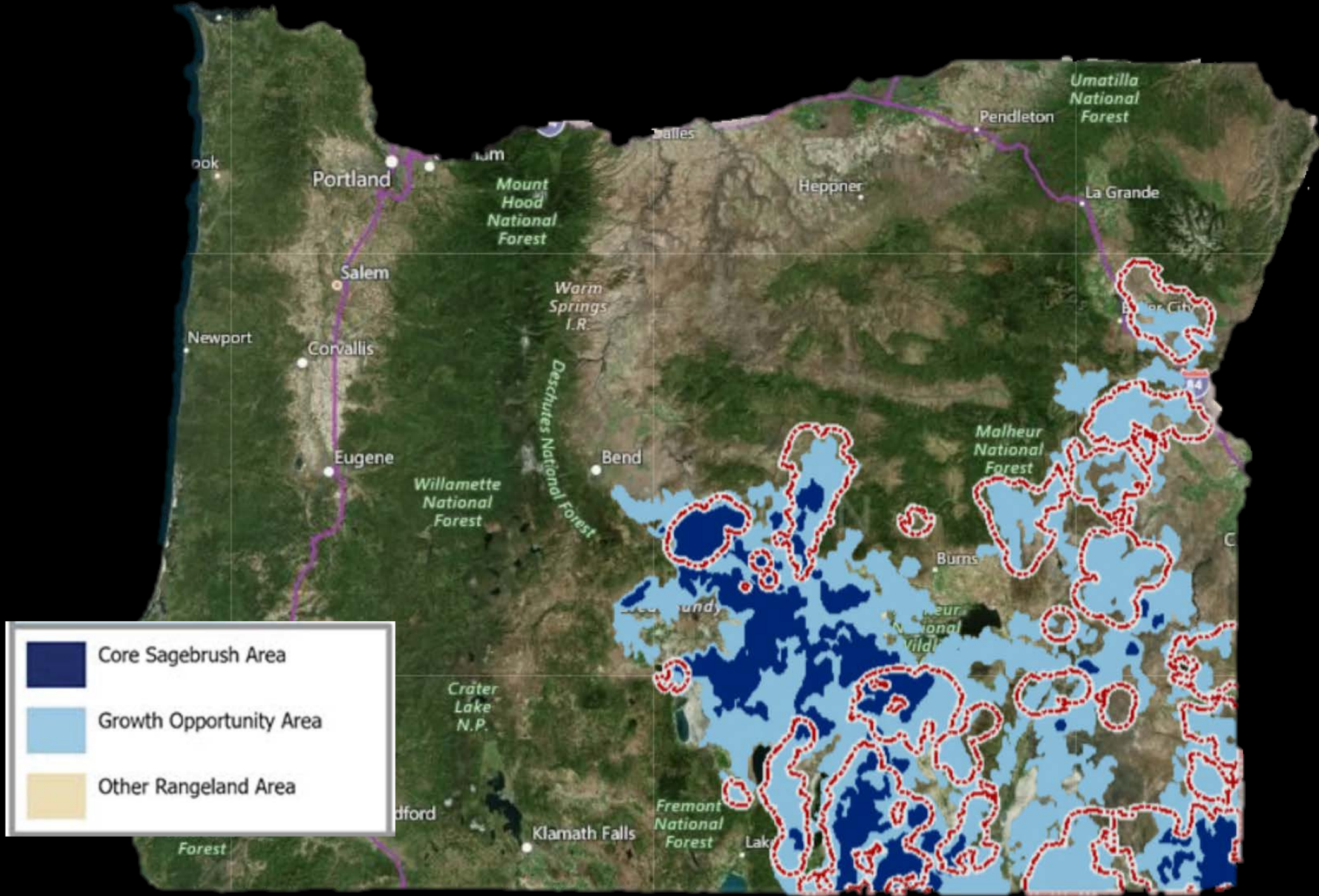
An imperfect road map is
better than none at all.







It's not about abandoning these areas:
Instead, the realistic emphasis should
be on reducing harmful impacts



A wide-angle photograph of a desert landscape. In the middle ground, a white boat with a blue stripe is parked on a blue trailer. To the left, a small grey trailer is visible. The terrain is covered in sparse, dry vegetation. In the background, there are low mountains under a cloudy sky.

How to keep the Sagebrush Sea afloat?

Bring your creative &
collaborative spirit to the table.

Infrastructure law funds Nevada sagebrush restoration projects

BY: JENIFFER SOLIS - JUNE 20, 2022 6:05 AM



Infrastructure law to fund sagebrush project spanning several Utah counties

By Ashtyn Asay - | Jun 16, 2022

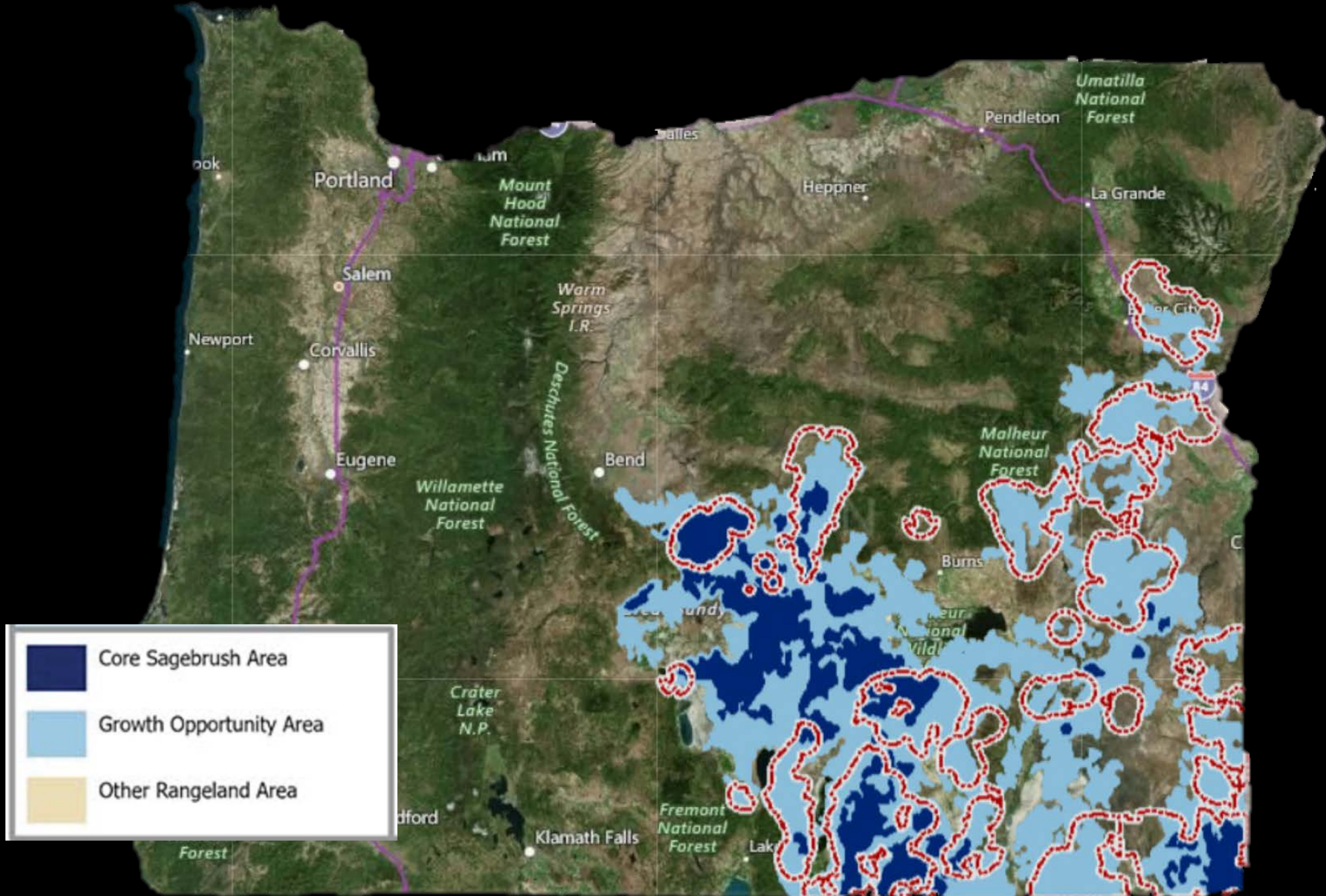
Southeast Oregon Wildfire Resiliency Project Infused with \$5 Million

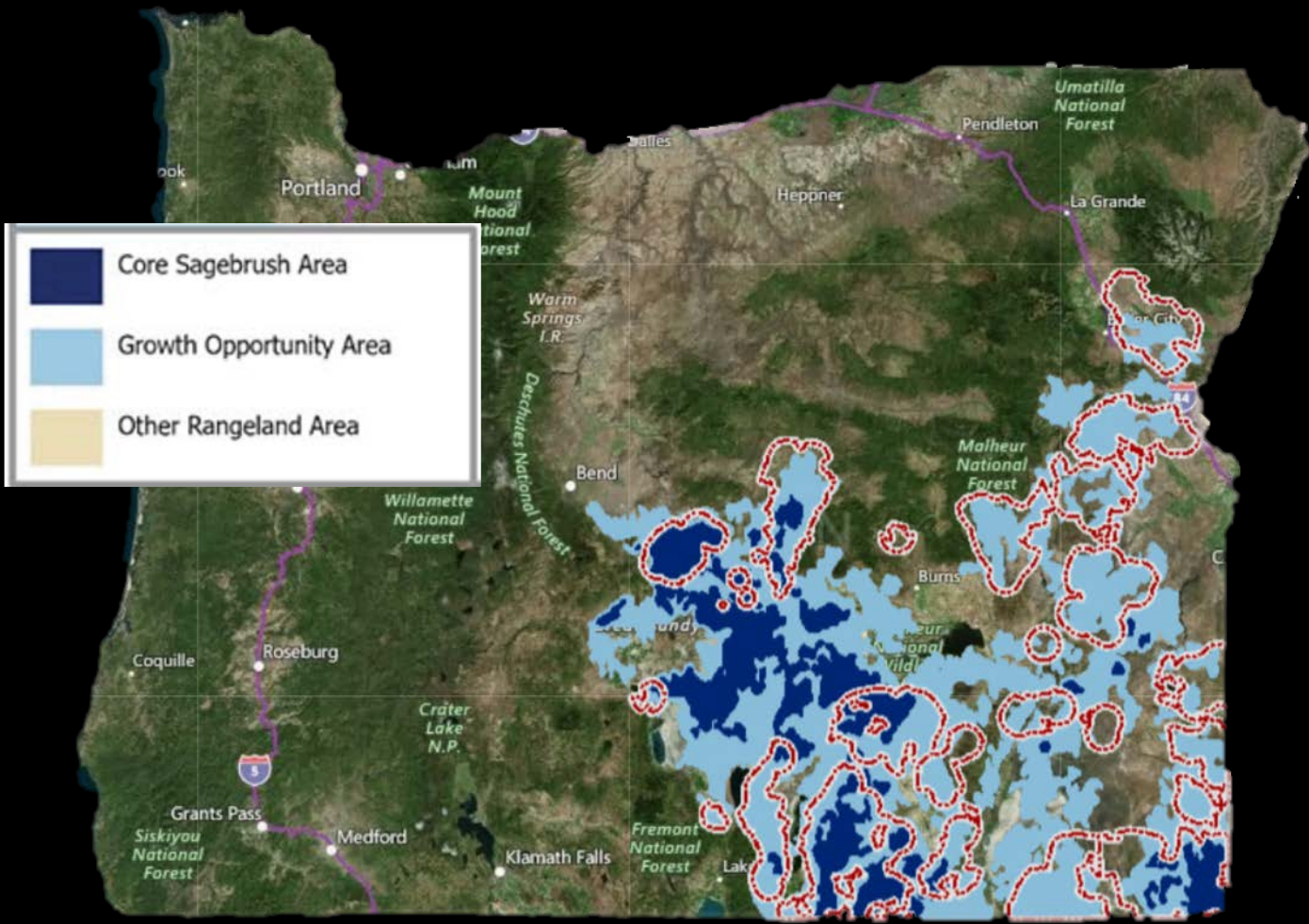
This funding will be used to address fire suppression, prevention and restoration of Southeast Oregon sagebrush sea landscape.

Sagebrush restoration is infrastructure, say bipartisan group of Western senators

BY: JENIFFER SOLIS - MARCH 29, 2022 9:00 AM







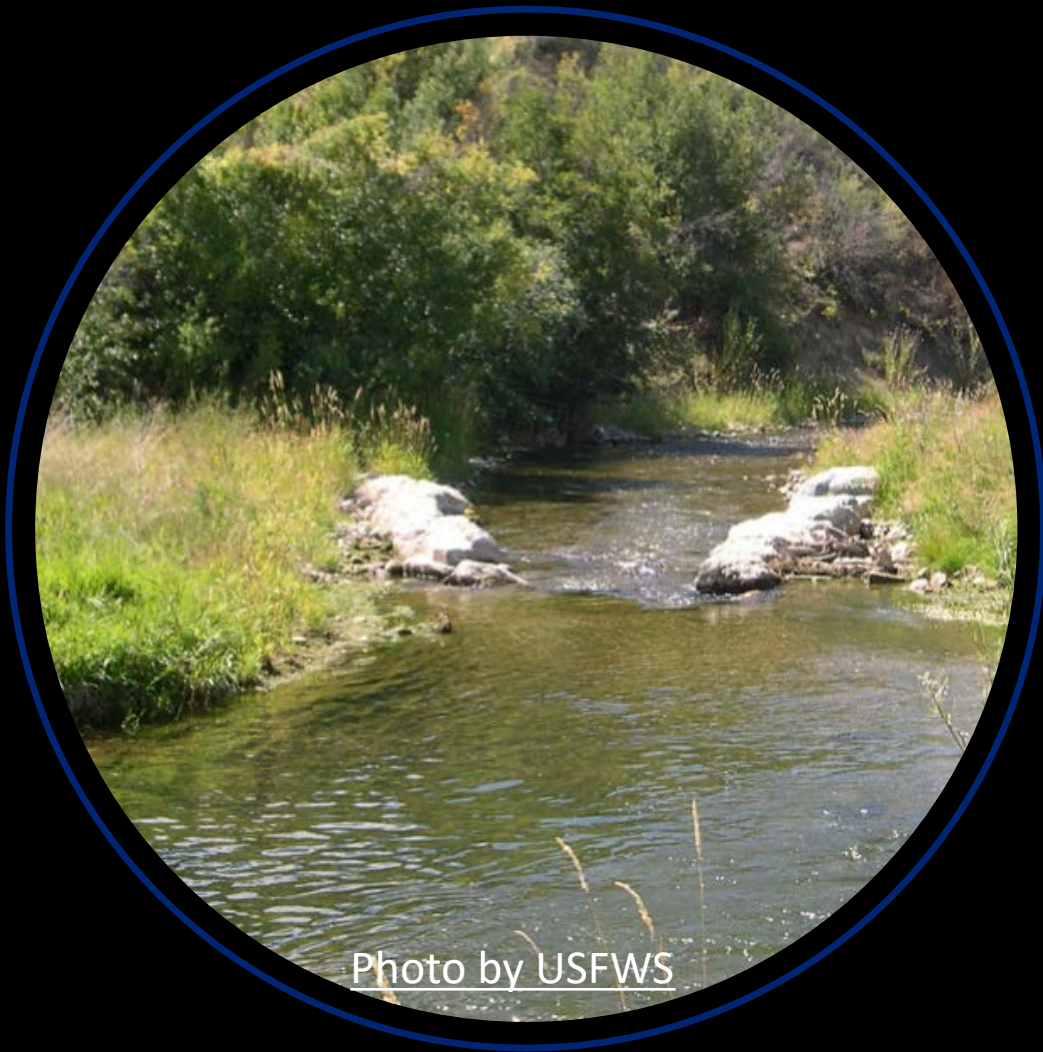
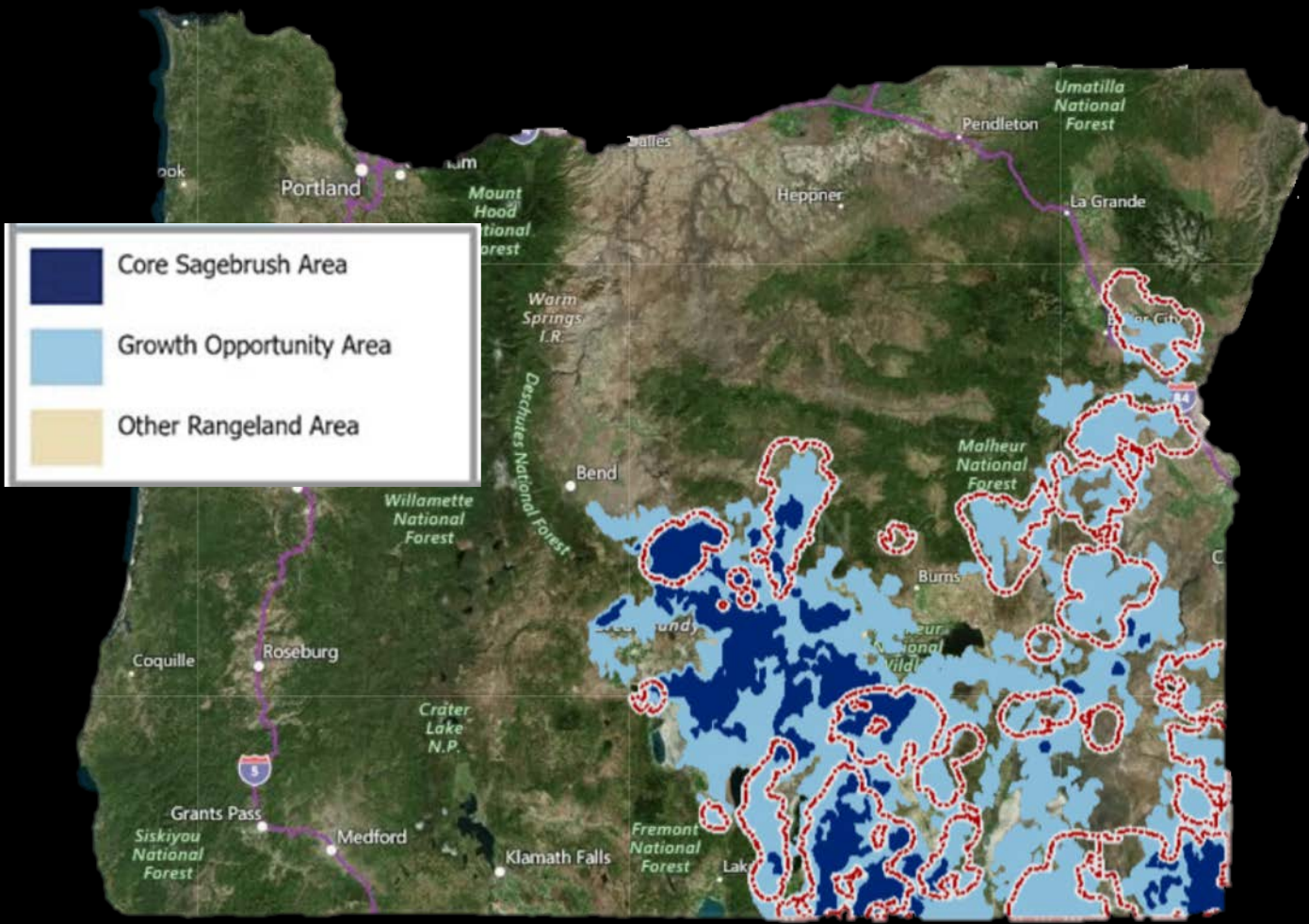


Photo by USFWS

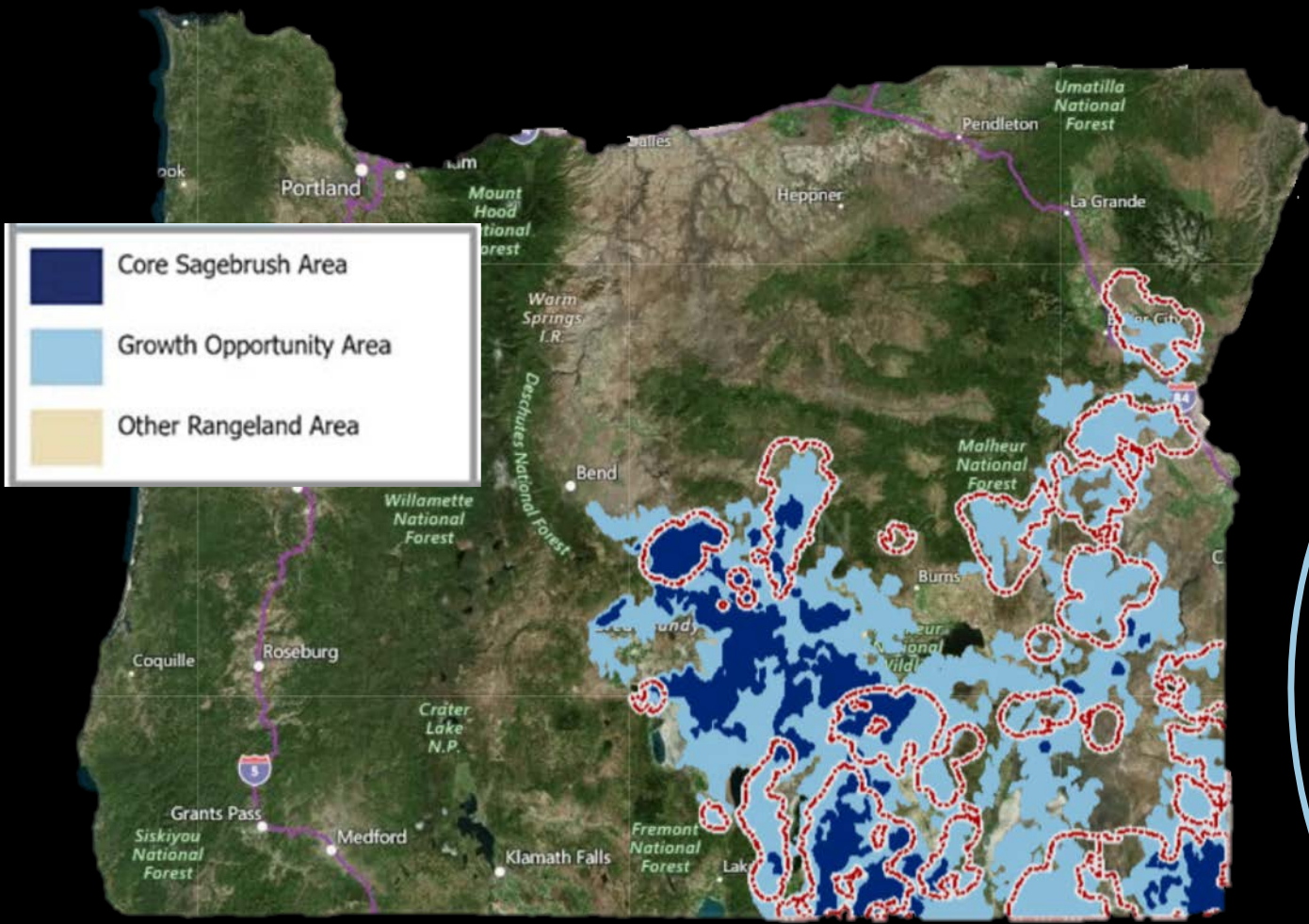


Photo by BLM

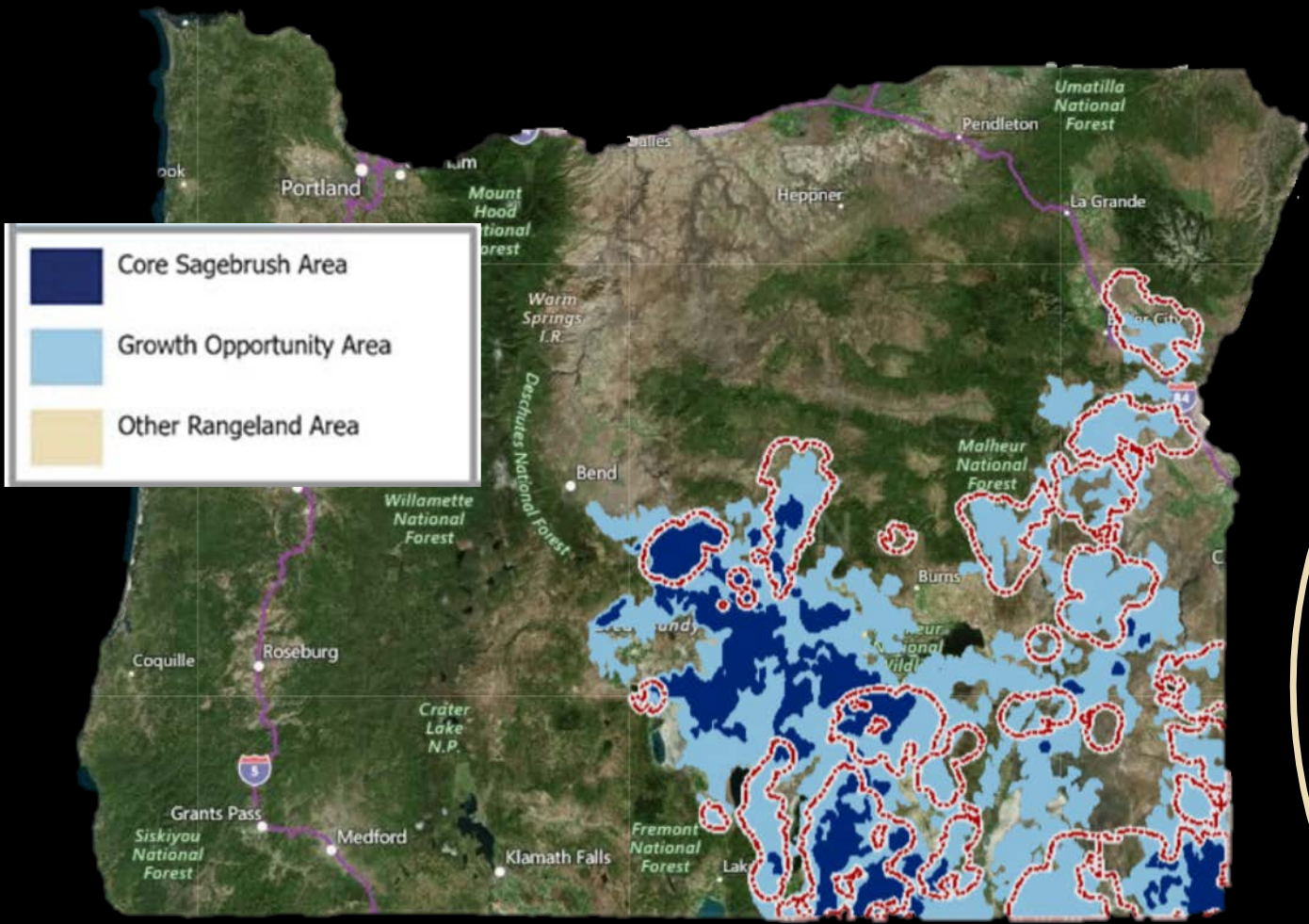
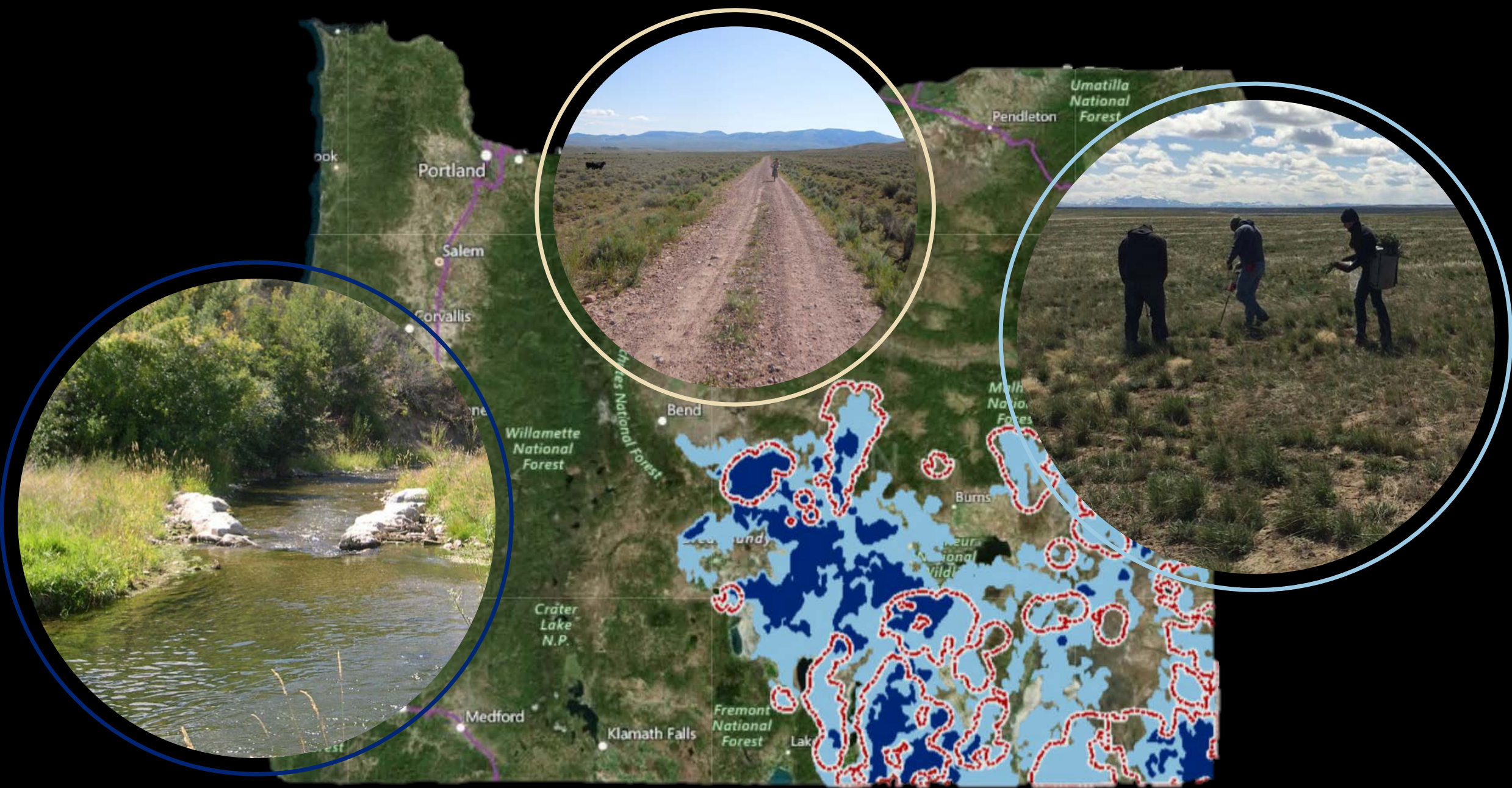


Photo by J. Werther



America the Beautiful Challenge 2022 Request for Proposals



Funding: \$375M over 5 years

Eligible: States, territories, and Tribes

Geographic Focus: National



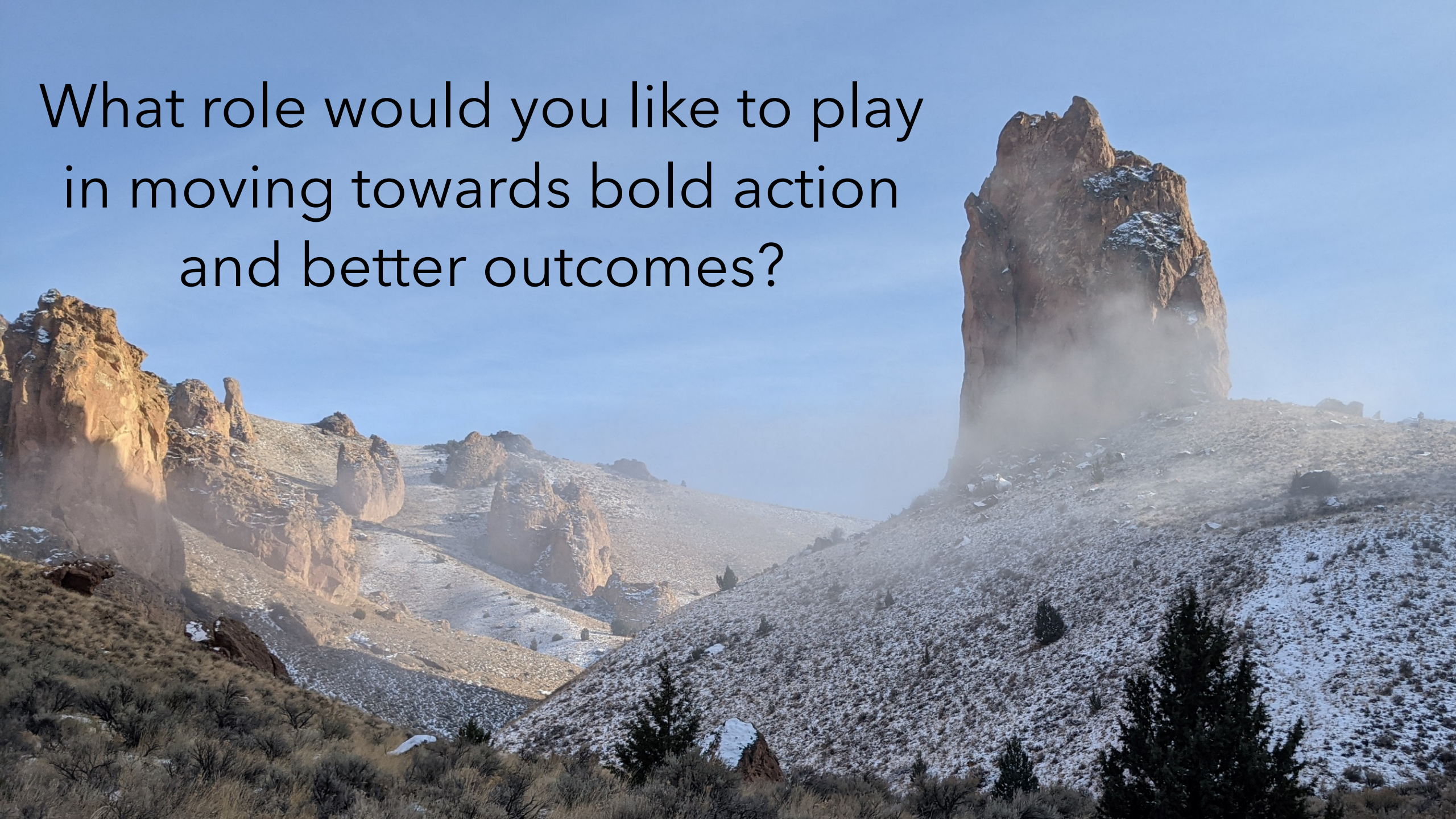
U.S. Fish & Wildlife Service

Bipartisan Infrastructure Law to
Fund Sagebrush Projects in the
West

Let's take big, bold
steps together



What role would you like to play
in moving towards bold action
and better outcomes?





Thank you for everything you've
done and will do!

Anya Tyson
Sage-steppe Conservation Specialist
anya.tyson@tnc.org
(541) 705-4543